

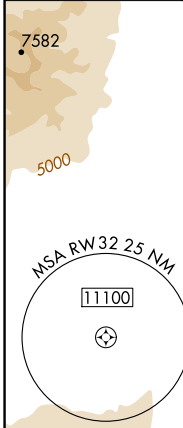
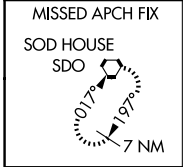
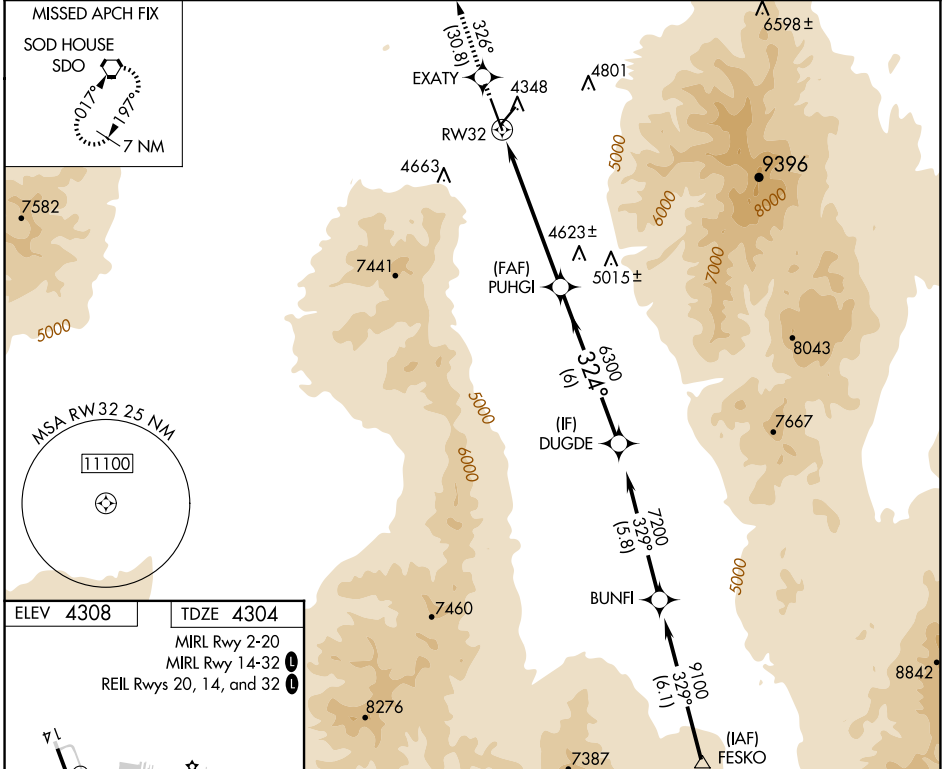
WAAS CH 72702 W32A	APP CRS 324°	Rwy Idg 7000 TDZE 4304 Apt Elev 4308
--	------------------------	---

RNAV (GPS) RWY 32

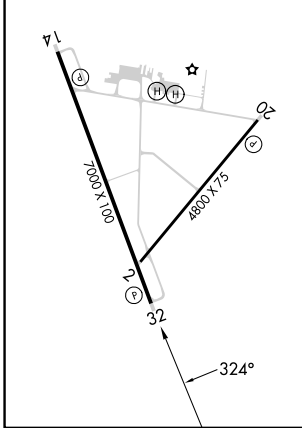
WINNEMUCCA MUNI (WMC)

RNP APCH.	<p>⚠ Rwy 32 helicopter visibility reduction below 3/4 SM NA. VDP NA when using Battle Mountain altimeter setting. When local altimeter setting not received, use Battle Mountain altimeter setting and increase all DAs/MDAs 140 feet.</p>	<p>MISSED APPROACH: Climb to 10000 direct EXATY and on track 326° to SDO VORTAC and hold.</p>
-----------	---	---

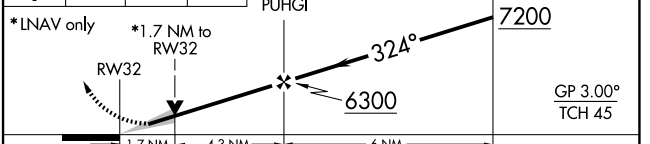
ASOS 120.175	SALT LAKE CITY CENTER 132.25 338.35	UNICOM 122.8 (CTAF) 0
------------------------	---	---------------------------------



ELEV 4308	TDZE 4304
MIRL Rwy 2-20	
MIRL Rwy 14-32	
REIL Rws 20, 14, and 32	



10000	EXATY	tr 326°	SDO	VGSI And RNAV glidepath not coincident (VGSI Angle 3.00/TCH 40).
			DUGDE	



CATEGORY	A	B	C	D
LPV DA	4554-3/4 250 (300-3/4)			
LNAV MDA	4880-1	576 (600-1)	4880-1 1/2 576 (600-1 1/2)	4880-1 3/4 576 (600-1 3/4)

SW-4, 15 MAY 2025 to 12 JUN 2025

SW-4, 15 MAY 2025 to 12 JUN 2025