

VOR/DME VEL 114.15 Chan 88 (Y)	APP CRS 329°	Rwy Idg 7000 TDZE 5274 Apt Elev 5274
--	------------------------	---

VOR RWY 35

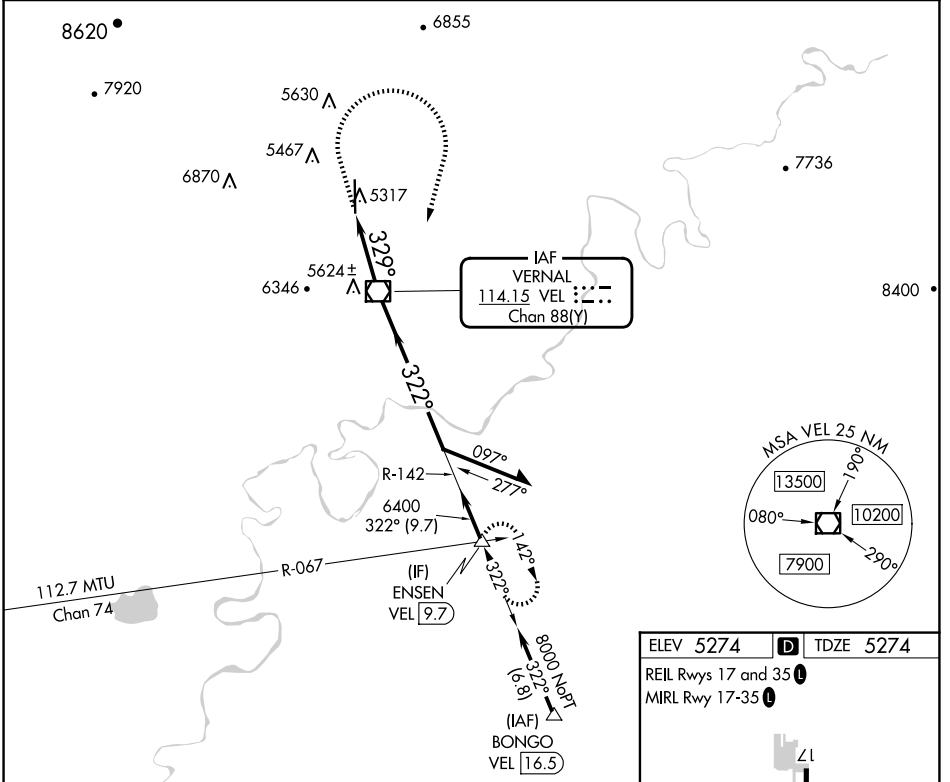
VERNAL RGNL (VEL)

⚠ Circling NA west of Rwy 17-35.
Rwy 35 helicopter visibility reduction below 3/4 NA.

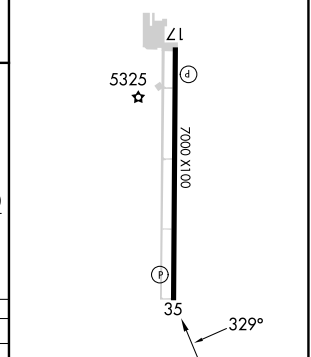
❄ -26°C

MISSED APPROACH: Climb to 6200 then climbing right turn to 8000 direct VEL VOR/DME and on VEL VOR/DME R-142 to ENSEN INT/9.7 DME and hold.

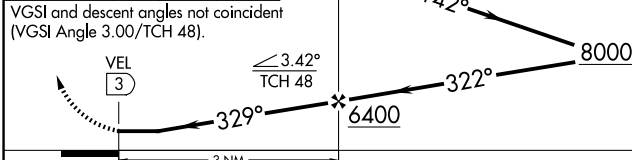
ASOS 118.125	SALT LAKE CENTER 119.95 377.15	UNICOM 122.7 (CTAF) Ⓛ
------------------------	--	--



ELEV 5274 D TDZE 5274
REIL Rws 17 and 35 Ⓛ
MIRL Rwy 17-35 Ⓛ



6200	8000	VEL	VEL R-142	ENSEN	VEL VOR/DME	Remain within 10 NM
------	------	-----	-----------	-------	-------------	---------------------



CATEGORY	A	B	C	D	
S-35	6160-1¼	886 (900-1¼)	6160-2½	886 (900-2½)	
C CIRCLING	6160-1¼	886 (900-1¼)	6160-2¾ 886 (900-2¾)	6400-3 1126 (1200-3)	
FAF to MAP 3 NM					
Knots	60	90	120	150	180
Min:Sec	3:00	2:00	1:30	1:12	1:00

SW-4, 15 MAY 2025 to 12 JUN 2025

SW-4, 15 MAY 2025 to 12 JUN 2025