

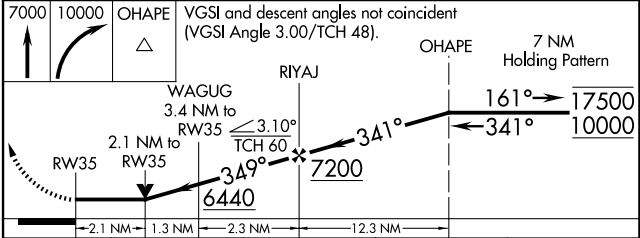
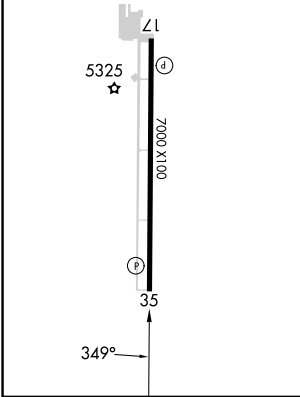
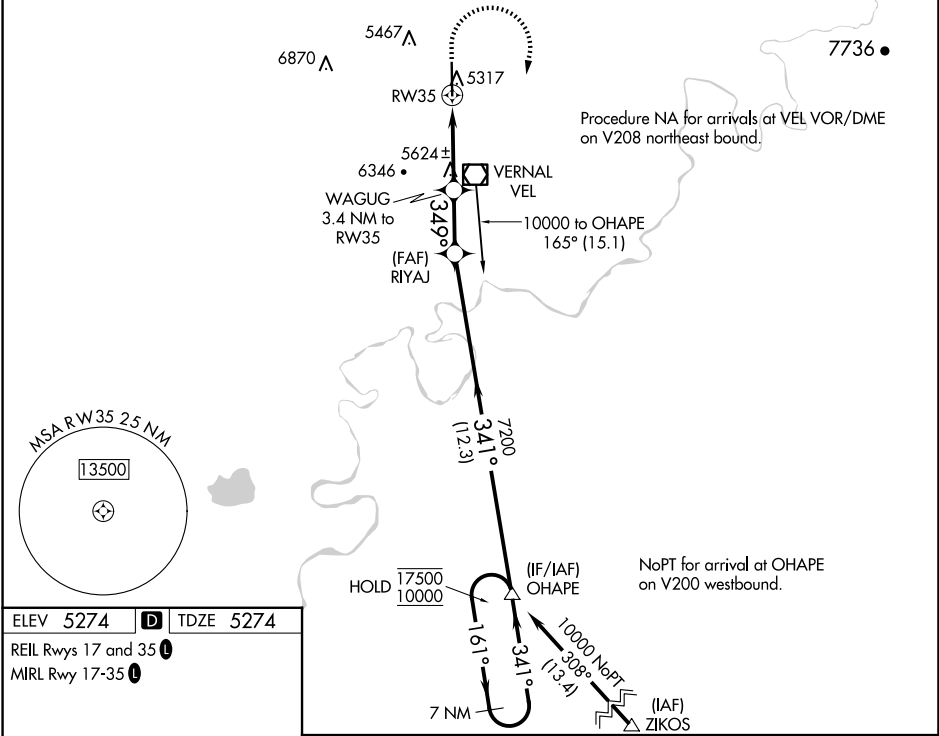
RNAV (GPS) Y RWY 35

VERNAL RGNL (VEL)

APP CRS	Rwy Idg	7000
349°	TDZE	5274
	Apt Elev	5274

RNP APCH.	MISSED APPROACH: Climb to 7000 then climbing right turn to 10000 direct OHAPE and hold.
<p>⚠ Circling NA west of Rwy 17-35. Rwy 35 helicopter visibility reduction below 3/4 NA.</p> <p>❄ -26°C</p>	*Missed approach requires minimum climb of 300 feet per NM to 7500.

ASOS 118.125	SALT LAKE CENTER 119.95 377.15	UNICOM 122.7 (CTAF)
------------------------	--	-------------------------------



CATEGORY	A	B	C	D
LNAV MDA*	5980-1	706 (800-1)	5980-2	706 (800-2)
LNAV MDA	6380-1 1/4 1106 (1200-1 1/4)	6380-1 1/2 1106 (1200-1 1/2)	6380-3	1106 (1200-3)
C CIRCLING	6380-1 1/4 1106 (1200-1 1/4)	6380-1 1/2 1106 (1200-1 1/2)	6380-3 1106 (1200-3)	6400-3 1126 (1200-3)

RNAV (GPS) Y RWY 35

SW-4, 15 MAY 2025 to 12 JUN 2025

SW-4, 15 MAY 2025 to 12 JUN 2025