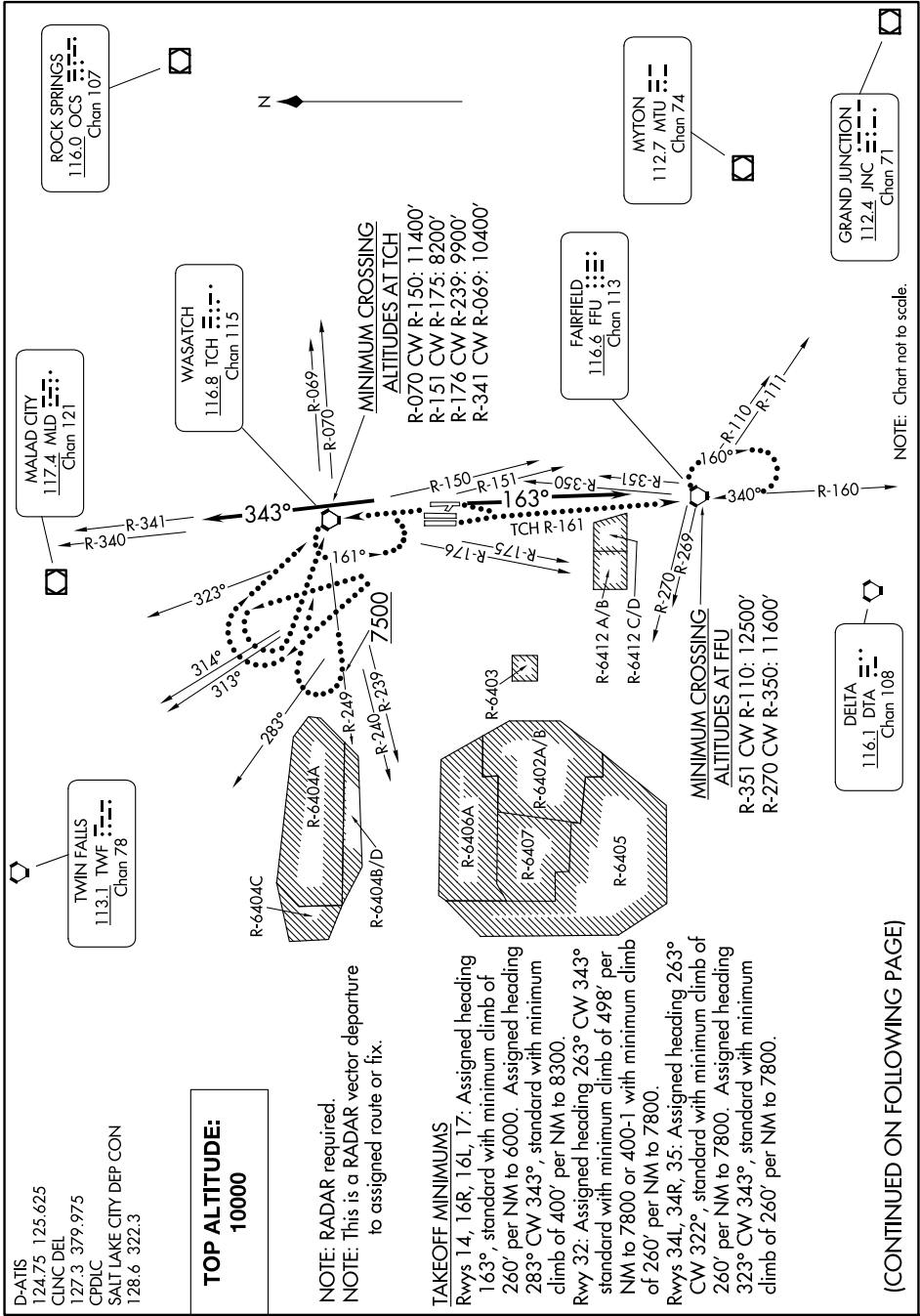


# SALT LAKE FOUR DEPARTURE

AL-365 (FAA)

SALT LAKE CITY INTL (SLC)  
SALT LAKE CITY, UTAH

SW-4, 15 MAY 2025 to 12 JUN 2025



D-ATIS 124.75 125.625  
 CLNC DEL 127.3 379.975  
 CPDLC  
 SALT LAKE CITY DEP CON 128.6 322.3

**TOP ALTITUDE:**  
**10000**

**NOTE: RADAR required.**  
**NOTE: This is a RADAR vector departure to assigned route or fix.**

**TAKEOFF MINIMUMS**

Rwys 14, 16R, 16L, 17: Assigned heading 163°, standard with minimum climb of 260' per NM to 6000. Assigned heading 283° CW 343°, standard with minimum climb of 400' per NM to 8300.  
 Rwy 32: Assigned heading 263° CW 343° standard with minimum climb of 498' per NM to 7800 or 400-1 with minimum climb of 260' per NM to 7800.  
 Rwys 34L, 34R, 35: Assigned heading 263° CW 322°, standard with minimum climb of 260' per NM to 7800. Assigned heading 323° CW 343°, standard with minimum climb of 260' per NM to 7800.

(CONTINUED ON FOLLOWING PAGE)

SALT LAKE CITY, UTAH  
 SALT LAKE CITY INTL (SLC)

SW-4, 15 MAY 2025 to 12 JUN 2025