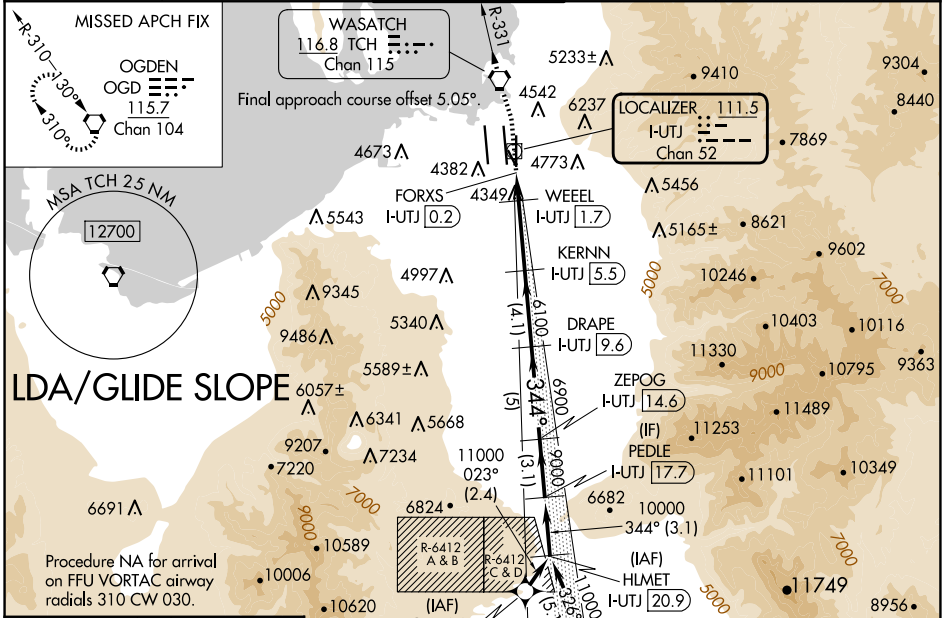


LOC/DME I-UTJ 111.5 Chan 52	APP CRS 344°	Rwy Idg 9272 TDZE 4227 Apt Elev 4231
---	------------------------	---

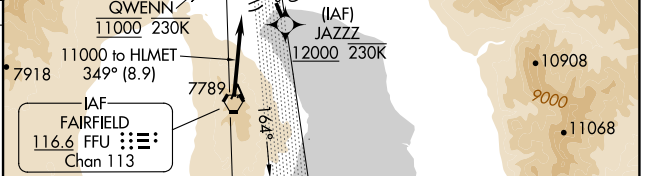
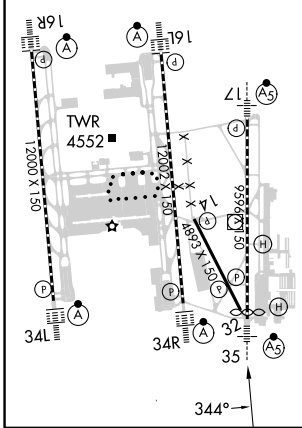
LDA RWY 35

SALT LAKE CITY INTL (SLC)

RNP APCH - GPS. From QWENN or JAZZ.			MALSR 	MISSED APPROACH: Climb to 4800 then climbing left turn to 9000 direct TCH VORTAC and on TCH VORTAC R-331 to OGD VORTAC and hold.		
DME required.						
<p>Simultaneous approach authorized. For inop ALS, increase S-LDA/GS 35 all Cats visibility to RVR 4000, increase S-LDA 35 Cat E visibility to 1 1/4 SM. Cat E restricted to USAF/USN aircraft.</p>						
D-ATIS 124.75 125.625	SALT LAKE CITY APP CON 125.7 284.6	SALT LAKE CITY TOWER 118.3 257.8	GND CON 121.9 348.6	CLNC DEL 127.3 379.975	CPDLC	



ELEV 4231	D	TDZE 4227
HIRL all Rwys TDZ/CL Rwys 16L, 16R, 17, 35, 34L, and 34R		



I-UTJ DME ANTENNA	FORXS I-UTJ [0.2]	WEEL I-UTJ [1.7]	KERNN I-UTJ [5.5]	DRAPE I-UTJ [9.6]	ZEPOG I-UTJ [14.6]	PEDLE I-UTJ [17.7]
0.4	0.7	0.8	-3.8 NM	-4.1 NM	-5 NM	-3.1 NM

CATEGORY	A		B		C		D		E	
S-LDA/GS 35	4477/24					250 (300-1/2)				
S-LDA 35	4660/24		433 (500-1/2)		4660/40		433 (500-3/4)			

SW-4, 15 MAY 2025 to 12 JUN 2025

SW-4, 15 MAY 2025 to 12 JUN 2025