

LOC/DME I-UAT 111.9 Chan 56	APP CRS 164°	Rwy Ldg 12000 TDZE 4226 Apt Elev 4231
---	------------------------	---

ILS RWY 16R (SA CAT I)

SALT LAKE CITY INTL (SLC)

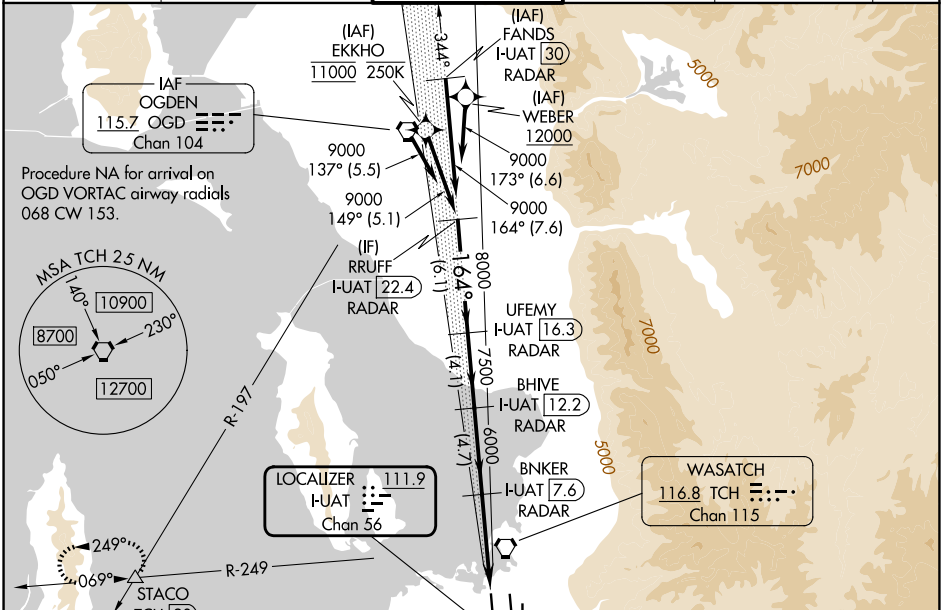
RNP APCH - GPS. From EKKHO or WEBER.
DME or RADAR required.

Simultaneous approach authorized.
Requires specific OPSPEC, MSPEC, or LOA approval.

ALSIF-2

MISSED APPROACH: Climb to 4800 then climbing right turn to 8100 on heading 310° and on TCH VORTAC R-249 to STACO INT/TCH 20 DME and hold.

D-ATIS 124.75 125.625	SALT LAKE CITY APP CON 125.7 284.6	SALT LAKE CITY TOWER 132.65 336.4	GND CON 123.775 348.6	CLNC DEL 127.3 379.975	CPDLC
---------------------------------	--	---	---------------------------------	----------------------------------	-------

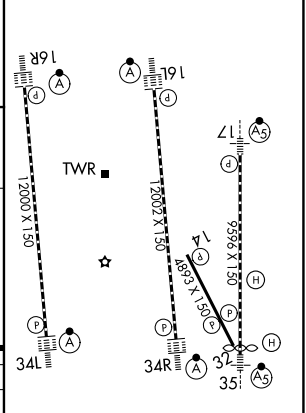
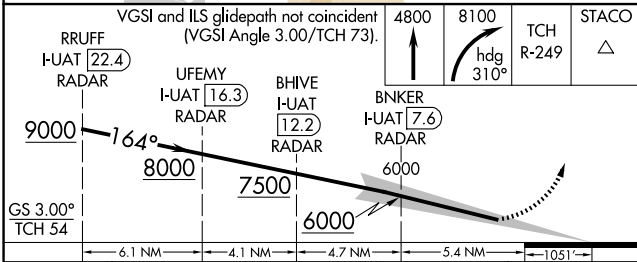


SW-4, 07 AUG 2025 to 04 SEP 2025

SW-4, 07 AUG 2025 to 04 SEP 2025



ELEV 4231	D	TDZE 4226
-----------	---	-----------



CATEGORY	A	B	C	D
S-ILS 16R	RA 154/14 150 DA 4376			

SA CATEGORY I ILS - SPECIAL AIRCREW & AIRCRAFT CERTIFICATION REQUIRED

HIRL all Rwys
TDZ/CL Rwys 16L, 16R, 17, 34L, 34R, and 35