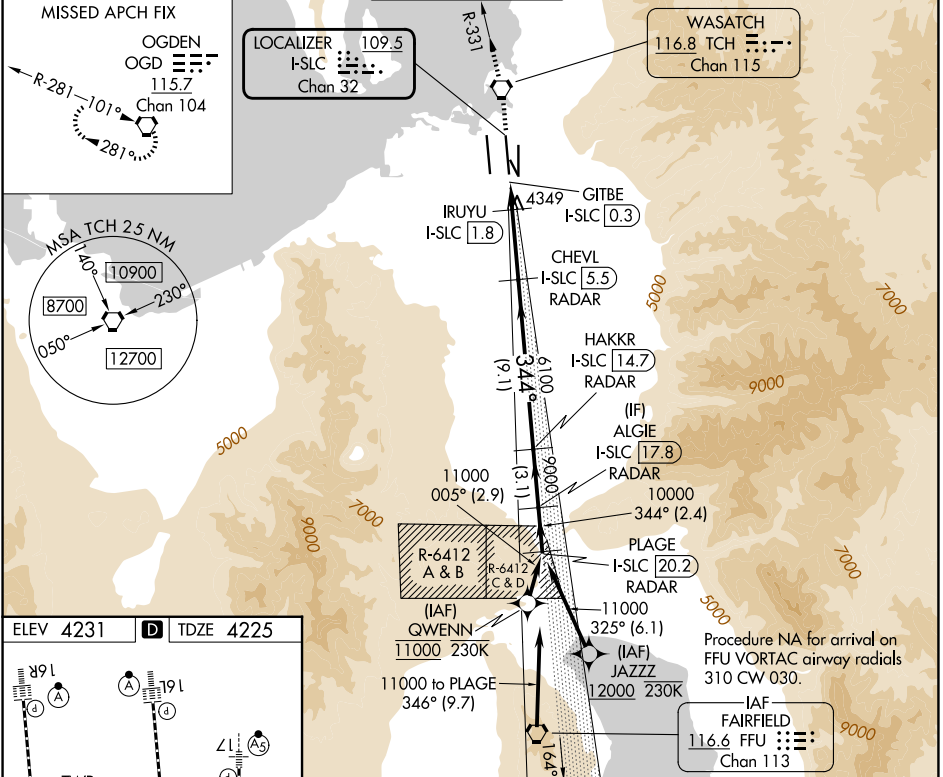


LOC/DME I-SLC 109.5 Chan 32	APP CRS 344°	Rwy Ldg 12002 TDZE 4225 Apt Elev 4231
---	------------------------	--

ILS or LOC RWY 34R

SALT LAKE CITY INTL (SLC)

RNP APCH - GPS. From QWENN or JAZZZ.		ALSF-2 	MISSED APPROACH: Climb to 9000 direct TCH VORTAC and on TCH VORTAC R-331 to OGD VORTAC and hold.		
DME required for LOC only. DME or RADAR required.					
<p>Simultaneous approach authorized. For inop ALS, increase S-LOC 34R Cat C/D visibility to RVR 5500.</p>					
D-ATIS 124.75 125.625	SALT LAKE CITY APP CON 125.7 284.6	SALT LAKE CITY TOWER 119.05 257.8	GND CON 123.775 348.6	CLNC DEL 127.3 379.975	CPDLC



ELEV 4231	D	TDZE 4225			
<p>HIRL all Rwys TDZ/CL Rwys 16L, 16R, 17, 35, 34L, and 34R</p>					
FAF to MAP 5.3 NM					
Knots	60	90	120	150	180
Min:Sec	5:18	3:32	2:39	2:07	1:46

9000 TCH	OGD	VGSIs and ILS glidepath not coincident (VGSi Angle 3.00/TCH 73).		PLAGE
				ALGIE I-SLC [20.2]
		CHEVL I-SLC [5.5]	HAKKR I-SLC [14.7]	RADAR
		IRUYU I-SLC [1.8]	RADAR	
		GITBE I-SLC [0.3]		
		<p>344° 11000</p> <p>6100 9000 10000</p> <p>4900 6100</p> <p>GS 3.00° TCH 55</p>		
CATEGORY	A	B	C	D
S-ILS 34R	4425/18 200 (200-½)			
S-LOC 34R	4600/24	375 (400-½)	4600/35	375 (400-⅔)

SW-4, 07 AUG 2025 to 04 SEP 2025

SW-4, 07 AUG 2025 to 04 SEP 2025