

LOC/DME I-UAT 111.9 Chan 56	APP CRS 164°	Rwy ldg 12000 TDZE 4226 Apt Elev 4231
---	------------------------	--

ILS or LOC RWY 16R

SALT LAKE CITY INTL (SLC)

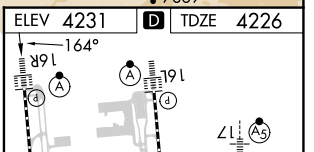
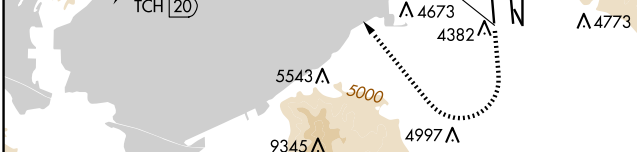
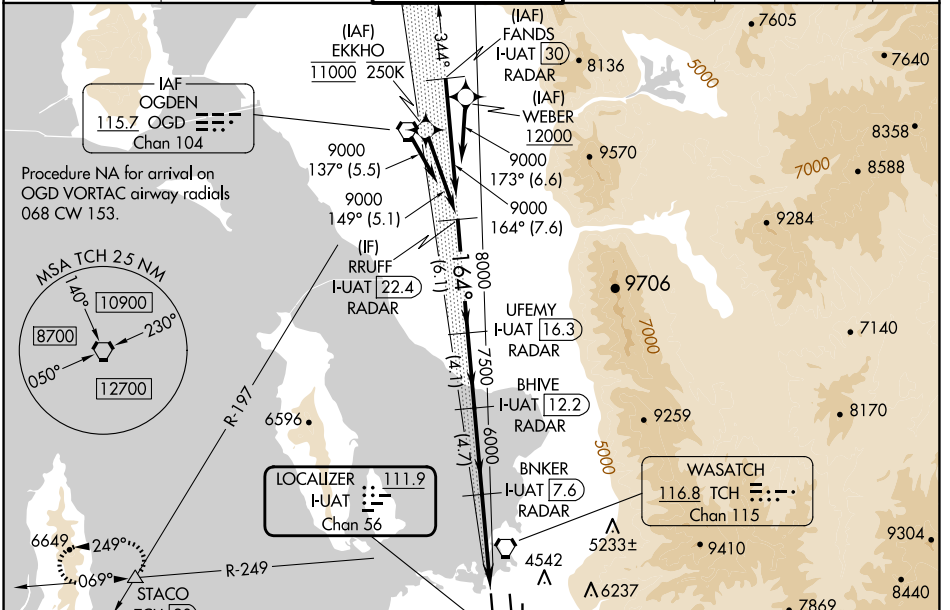
RNP APCH - GPS. From EKKHO or WEBER.
DME or RADAR required.

Simultaneous approach authorized. For inop ALS, increase S-LOC 16R Cat A and B visibilities to RVR 5500, and Cat C and D visibilities to 1½ SM.

ALSF-2

MISSED APPROACH: Climb to 4800 then climbing right turn to 8100 on heading 310° and on TCH VORTAC R-249 to STACO INT/TCH 20 DME and hold.

D-ATIS 124.75 125.625	SALT LAKE CITY APP CON 125.7 284.6	SALT LAKE CITY TOWER 132.65 336.4	GND CON 123.775 348.6	CLNC DEL 127.3 379.975	CPDLC
---------------------------------	--	---	---------------------------------	----------------------------------	-------



RRUFF I-UAT 22.4 RADAR	UFEMY I-UAT 16.3 RADAR	BHIVE I-UAT 12.2 RADAR	BNKER I-UAT 7.6 RADAR	I-UAT 3.3	I-UAT 2.1
9000	8000	7500	6000	6000	6000
164°					
310°					
R-249					
STACO					

CATEGORY	A	B	C	D	
S-ILS 16R	4426/18		200 (200-½)		
S-LOC 16R	4680/24	454 (500-½)	4680/45	454 (500-¾)	
FAF to MAP 5.4 NM					
Knots	60	90	120	150	180
Min:Sec	5:24	3:36	2:42	2:10	1:48

SW-4, 15 MAY 2025 to 12 JUN 2025

SW-4, 15 MAY 2025 to 12 JUN 2025