

(FFU9.FFU) 24025

FAIRFIELD NINE DEPARTURE

AL-365 (FAA)

SALT LAKE CITY INTL (SLC)
SALT LAKE CITY, UTAH

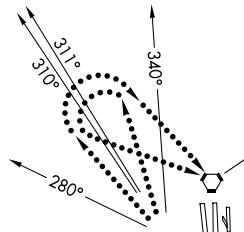
D-ATIS
124.75 125.625
CLNC DEL
127.3 379.975
CPDLC
SALT LAKE CITY DEP CON
128.6 322.3

**TOP ALTITUDE:
10000**

TAKEOFF MINIMUMS

Rwys 14, 32, 34L/R, 35: NA- ATC.
Rwys 16L/R, 17: Assigned heading 160°, standard with minimum climb of 260' per NM to 6000; assigned heading 280° CW 340°, standard with minimum climb of 400' per NM to 8300.

NOTE: DME required.
NOTE: RADAR required.
NOTE: This is a RADAR vector departure to assigned route or fix.



WASATCH
116.8 TCH
Chan 115

FAIRFIELD
116.6 FFU
Chan 113

DELTA
116.1 DTA
Chan 108

MILFORD
112.1 MLF
Chan 58

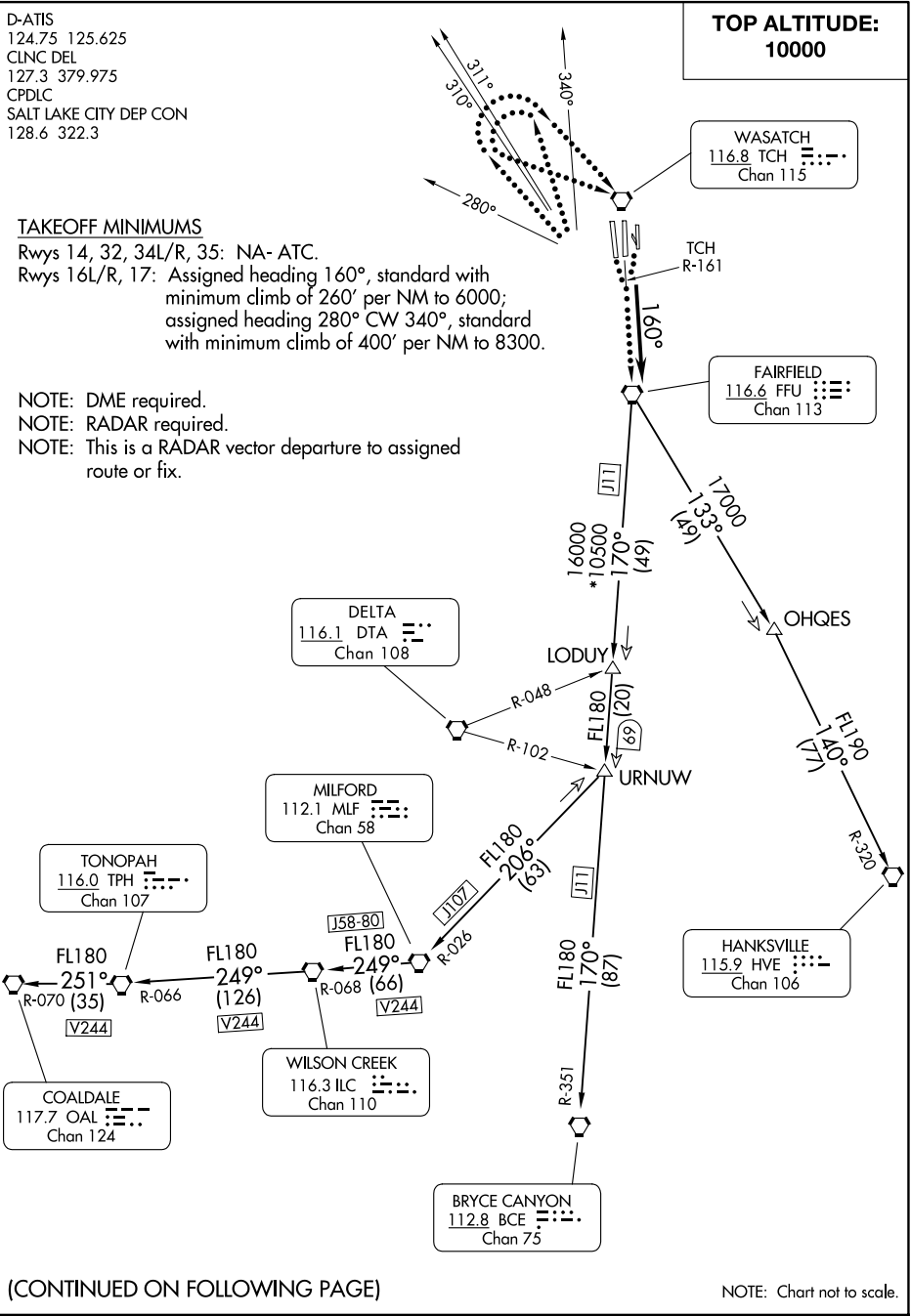
TONOPAHA
116.0 TPH
Chan 107

HANKSVILLE
115.9 HVE
Chan 106

COALDALE
117.7 OAL
Chan 124

WILSON CREEK
116.3 ILC
Chan 110

BRYCE CANYON
112.8 BCE
Chan 75



SW-4, 15 MAY 2025 to 12 JUN 2025

SW-4, 15 MAY 2025 to 12 JUN 2025

(CONTINUED ON FOLLOWING PAGE)

NOTE: Chart not to scale.

FAIRFIELD NINE DEPARTURE

(FFU9.FFU) 17AUG17

SALT LAKE CITY, UTAH
SALT LAKE CITY INTL (SLC)