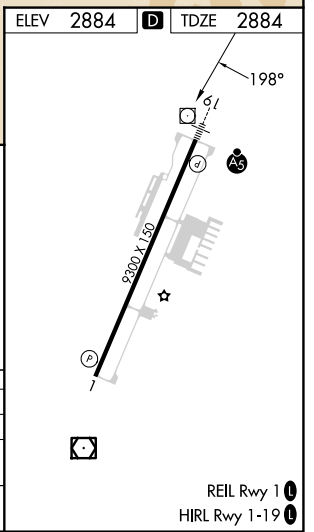
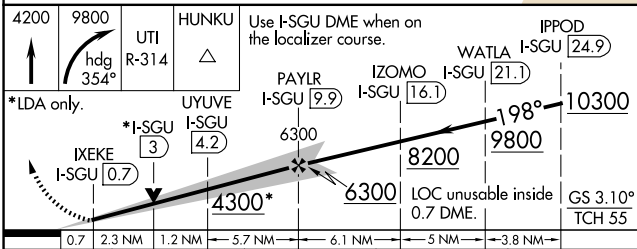
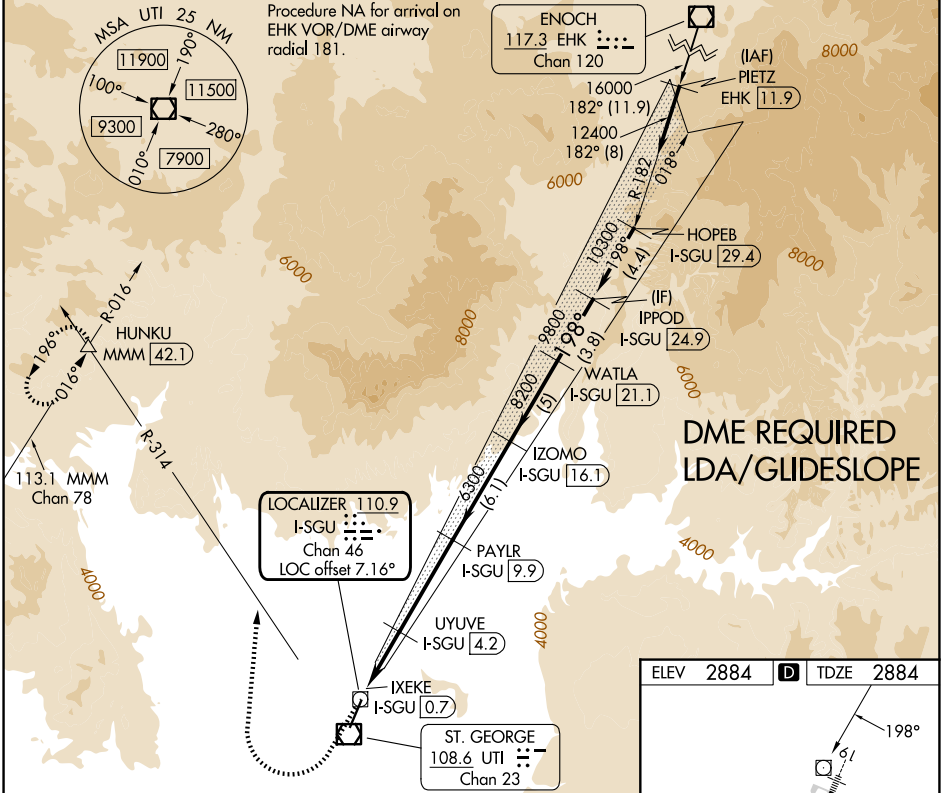


LOC/DME I-SGU 110.9 Chan 46	APP CRS 198°	Rwy Ldg TDZE 9300 2884	Apt Elev 2884
--	------------------------	--	-------------------------

LDA RWY 19
ST GEORGE RGNL (SGU)

<p>NA -5°C</p>	<p>DME required. For inop ALS, increase S-LDA/GS 19 all Cats visibility to 7/8 SM.</p>	<p>MALSRL</p>	<p>MISSED APPROACH: Climb to 4200 then climbing right turn to 9800 on heading 354° and UTI VOR/DME R-314 to HUNKU INT/ MMM 42.1 DME and hold, continue climb-in-hold to 9800.</p>
---------------------------	--	----------------------	---

AWOS-3PT 135.075	LOS ANGELES CENTER 124.2 343.6	CLNC DEL 133.3	UNICOM 123.075 (CTAF)
----------------------------	--	--------------------------	---------------------------------



SW-4, 07 AUG 2025 to 04 SEP 2025

SW-4, 07 AUG 2025 to 04 SEP 2025