

FALLON, NEVADA

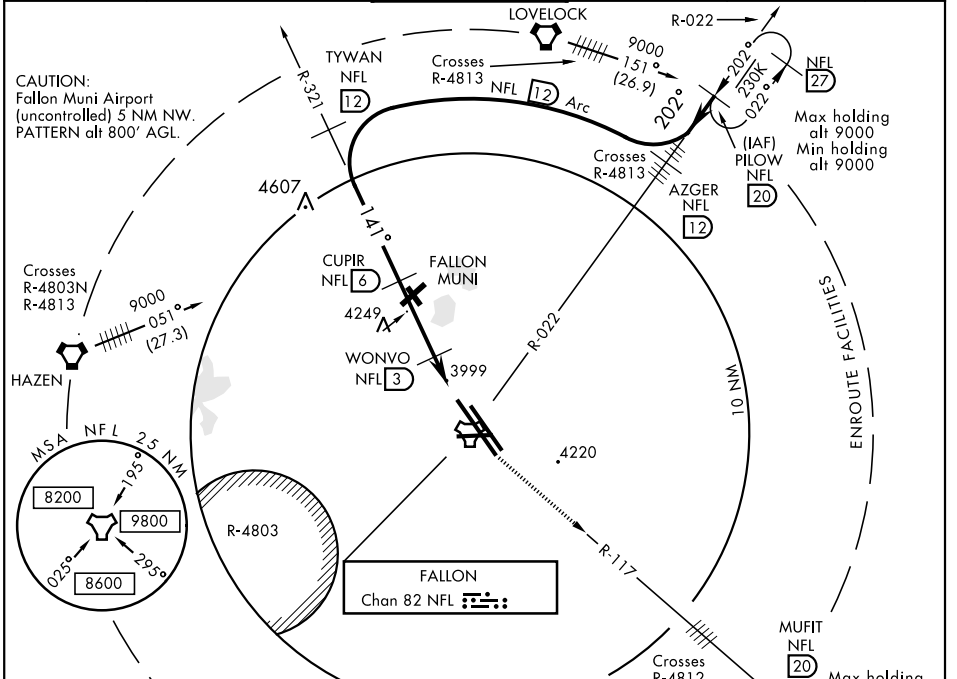
TACAN RWY 13R

TACAN NFL Chan 82	APCH CRS 141°	Rwy Idg 14,001 THRE 3935 Arprt Elev 3935
-----------------------------	-------------------------	---

AL-143 [USN] FALLON NAS (VAN VOORHIS FLD) (KNFL)

† MISSED APPROACH: Climb direct NFL TACAN, then climbing left turn to 9800. Intercept NFL R-117 outbound to MUFIT and hold. Continue climb-in-hold to 9800.

ATIS ★ 370.925	NAVY FALLON APP CON 120.85 360.2	NAVY FALLON TOWER★ 119.25 340.2	GND CON 251.15	CLNC DEL 353.55	ASR/PAR
--------------------------	--	---	--------------------------	---------------------------	---------



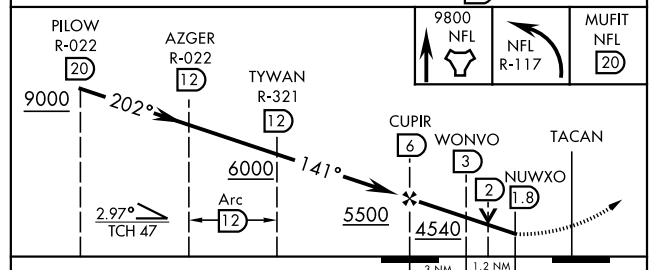
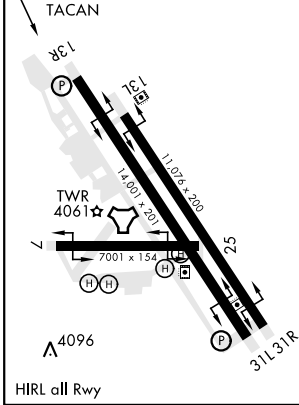
EMERG SAFE ALT 100 NM 15,600

ELEV 3935	THRE 3935
-----------	-----------

† CAUTION: Missed Approach
Minimum Climb Rate to 9800

Knots	60	120	180	240
V/V(fpm)	220	440	660	880

ATC Minimum Climb Rate



CATEGORY	A	B	C	D
S-13R		4240-1	305 (400-1)	
CIRCLING	4400-1 465 (500-1)		4400-1½ 465 (500-1½)	4520-2 585 (600-2)

FALLON, NEVADA
Amdt 1 08JAN15

39°25'N-118°42'W FALLON NAS (VAN VOORHIS FLD) (KNFL)

TACAN RWY 13R

SW-4, 16 AUG 2018 to 13 SEP 2018

SW-4, 16 AUG 2018 to 13 SEP 2018