

FALLON, NEVADA

# RNAV (GPS) RWY 13R

APCH CRS <b>131°</b>	Rwy ldg <b>14,001</b> THRE <b>3935</b> Arpt Elev <b>3935</b>
-------------------------	--

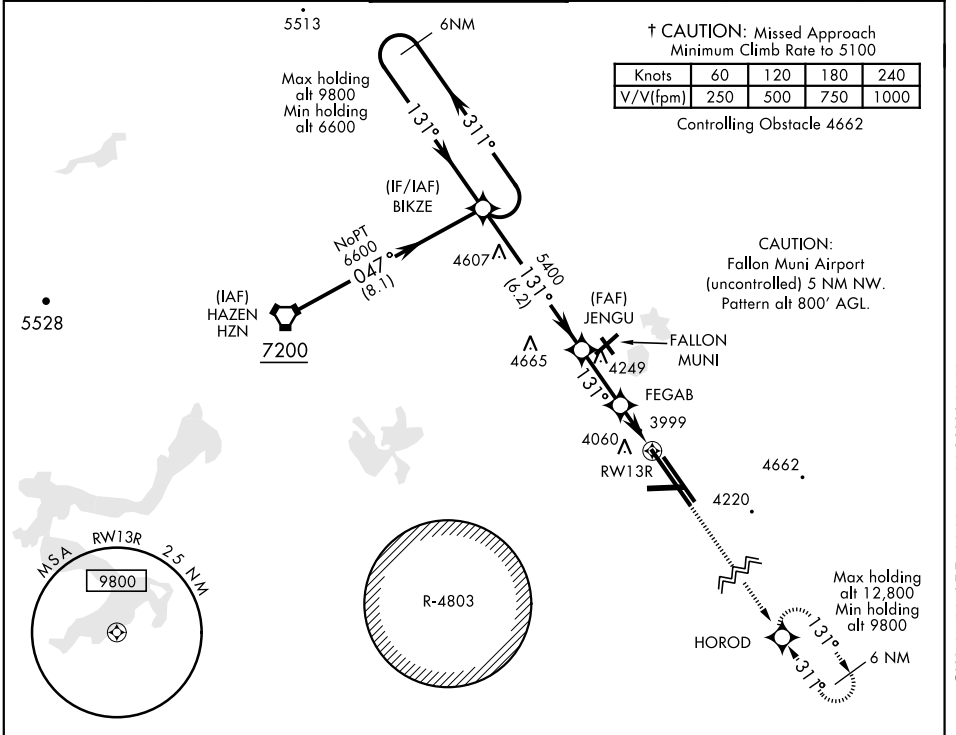
AL-143 [USN]

FALLON NAS (VAN VOORHIS FLD) (KNFL)

▼ For uncompensated Baro-VNAV systems, LNAV/VNAV NA below -22°C(-9°F) or above 20°C(68°F) DME/DME RNP-0.3 NA

† MISSED APPROACH: Climb to 9800 direct HOROD and hold. Continue climb-in-hold. Max 175 KIAS until 9800.

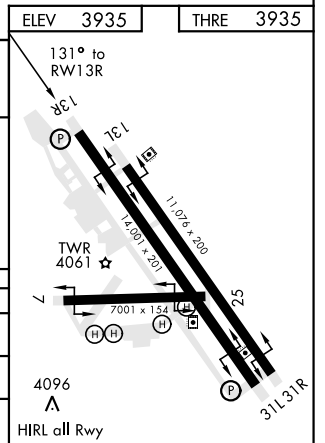
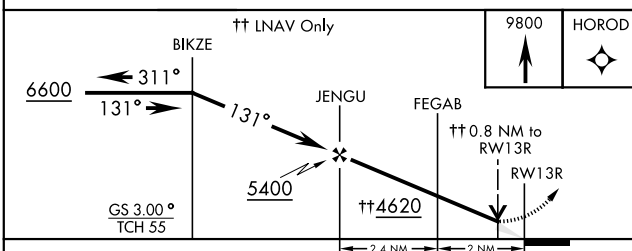
ATIS ★ <b>370.925</b>	NAVY FALLON APP CON <b>120.85 360.2</b>	NAVY FALLON TOWER ★ <b>119.25 340.2</b>	GND CON <b>251.15</b>	CLNC DEL <b>353.55</b>	ASR/PAR
--------------------------	--	--	--------------------------	---------------------------	---------



SW-4, 26 APR 2018 to 24 MAY 2018

SW-4, 26 APR 2018 to 24 MAY 2018

EMERG SAFE ALT 100 NM 15,600



CATEGORY	A	B	C	D
LNAV/VNAV DA		4340-1 $\frac{3}{8}$	405 (500-1 $\frac{3}{8}$ )	
LNAV MDA		4260-1	325 (400-1)	
CIRCLING	4400-1	465 (500-1)	4400-1 $\frac{1}{2}$ 465 (500-1 $\frac{1}{2}$ )	4520-2 585 (600-2)

FALLON, NEVADA  
Amdt 2 08JAN15

39° 25'N-118° 42'W

FALLON NAS (VAN VOORHIS FLD) (KNFL)

# RNAV (GPS) RWY 13R