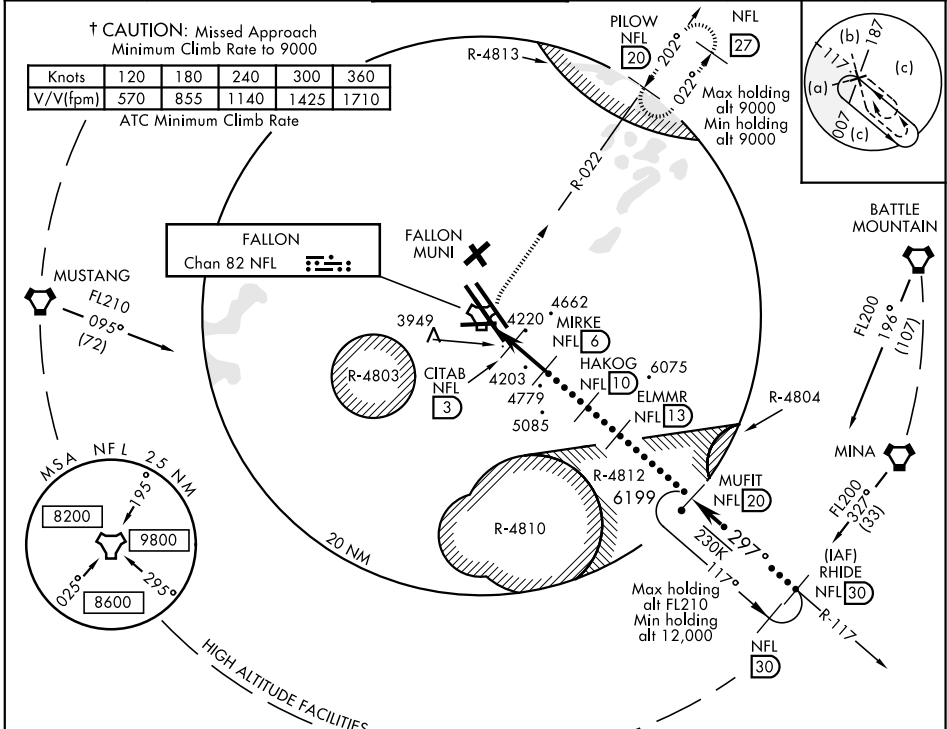


HI-TACAN RWY 31 L/R

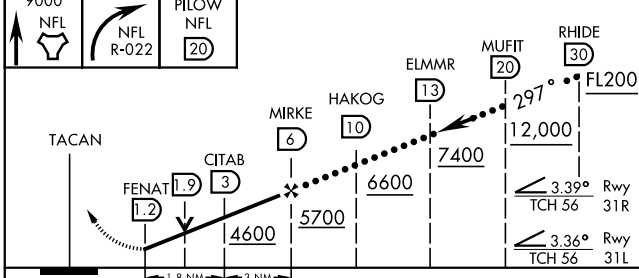
TACAN NFL Chan 82	APCH CRS 297°	Rwy Ldg THRE	31L 14,001 31L 3926	31R 11,076 31R 3926
		Arpt Elev 3935	JAL-143 [USN]	

FALLON NAS (VAN VOORHIS FLD) (KNFL)

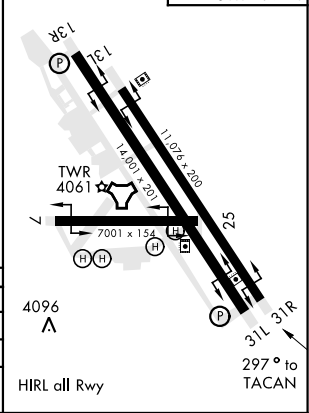
† MISSED APPROACH: Climb direct NFL TACAN, then climbing right turn to 9000. Intercept NFL R-022 outbound to PILOW and hold.					
ATIS ★ 370.925	NAVY FALLON APP CON 120.85 360.2	NAVY FALLON TOWER★ 119.25 340.2	GND CON 251.15	CLNC DEL 353.55	ASR/PAR



EMERG SAFE ALT 100 NM 15,600	ELEV 3935	THRE 31L 3926	THRE 31R 3926
------------------------------	-----------	---------------	---------------



CATEGORY	C	D	E
S-31L	4240-1	314	(400-1)
S-31R	4240-1	314	(400-1)
CIRCLING	4400-1½ 465 (500-1½)	4520-2 585 (600-2)	4980-3 1045 (1100-3)



HI-TACAN RWY 31 L/R

SW-4, 06 DEC 2018 to 03 JAN 2019

SW-4, 06 DEC 2018 to 03 JAN 2019