

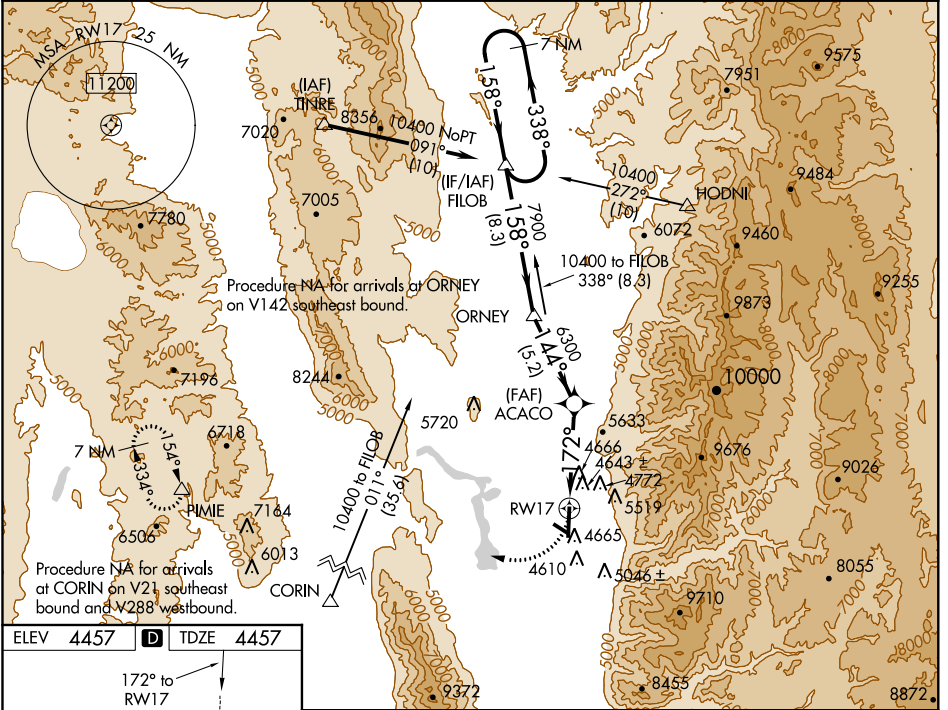
APP CRS	Rwy Idg	9010
172°	TDZE	4457
	Apt Elev	4457

RNAV (GPS) RWY 17

LOGAN-CACHE (L&U)

<p>▽ DME/DME RNP-0.3 NA. Circling NA east of Rwy 17-35. ⚠ Night Landing: Rwy 10-28 NA. ⚡ -25°C Inop table does not apply to LNAV Cats C/D. *Missed approach requires minimum climb of 310 feet per NM to 7700.</p>	<p>MALSR </p> <p>MISSED APPROACH: Climbing right turn to 10000 direct PIMIE and hold, continue climb-in-hold to 10000.</p>
--	--

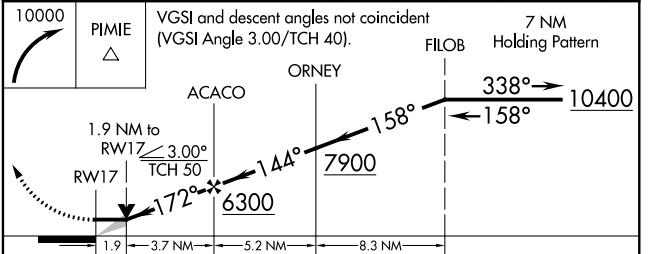
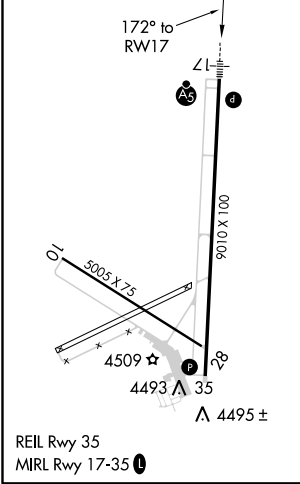
ASOS 135.275	CEDAR CITY RADIO 122.2	UNICOM 122.8 (CTAF)
------------------------	----------------------------------	-------------------------------



SW-4, 01 MAR 2018 to 29 MAR 2018

SW-4, 01 MAR 2018 to 29 MAR 2018

ELEV	4457	D	TDZE	4457
------	-------------	----------	------	-------------



CATEGORY	A	B	C	D
*LNAV MDA	5100-1/2	643 (700-1/2)	5100-1 3/8	643 (700-1 3/8)
LNAV MDA	5800-3/4 1343 (1400-3/4)	5800-1 1343 (1400-1)	5800-3	1343 (1400-3)
C CIRCLING	5800-1 1/4 1343 (1400-1 1/4)	5800-1 1/2 1343 (1400-1 1/2)	5800-3	1343 (1400-3)