

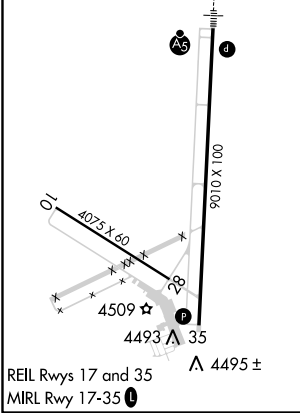
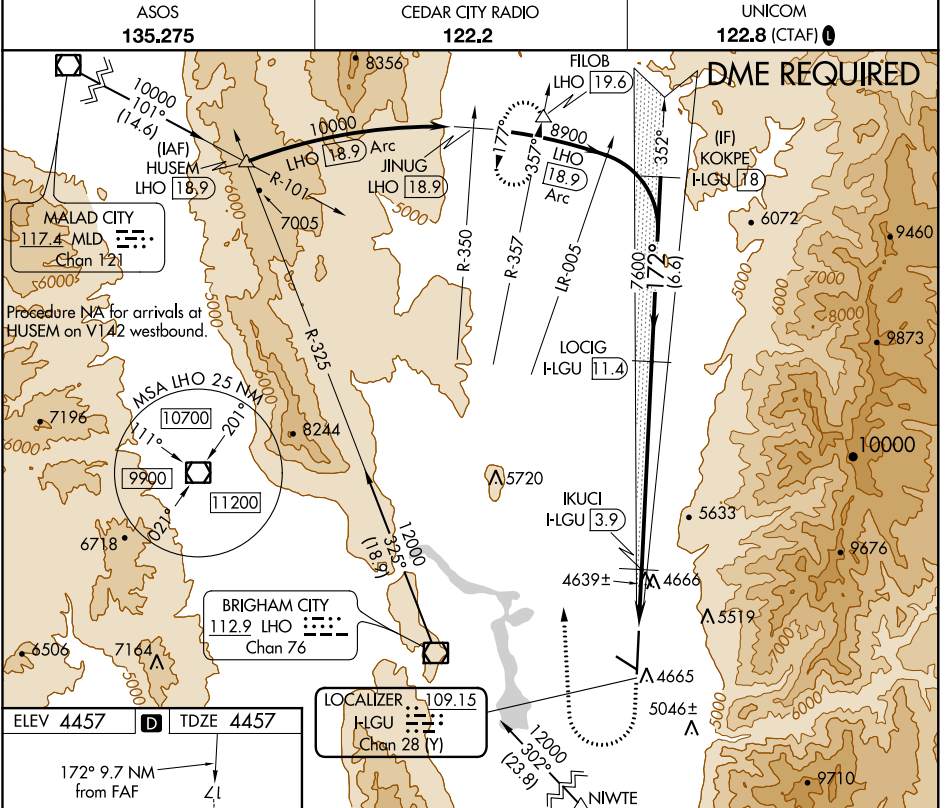
LOC/DME H/GU <b>109.15</b> Chan 28 (Y)	APP CRS <b>172°</b>	Rwy Idg <b>9010</b> TDZE <b>4457</b> Apt Elev <b>4457</b>
--	------------------------	--

# ILS or LOC/DME RWY 17

LOGAN-CACHE (L/GU)

**NA** Circling NA east of Rwy 17-35  
**-25°C** Night Landing: Rwy 10, 28 NA.

**MALSR** MISSED APPROACH: Climb to 5800 then climbing right turn to 12000 on heading 345° and on LHO VOR/DME R-357 to FIOB INT/LHO 19.6 DME and hold, continue climb-in-hold to 12000.



Use I-LGU DME when on localizer course.

VGSI and ILS glidepath not coincident (VGSI Angle 3.00/TCH 40).

**LOCIG** H/GU 11.4, **KOKPE** I-LGU 18

**IKUCI** H/GU 3.9, **NIWTE**

**LOCIG** H/GU 11.4, **IKUCI** H/GU 3.9, **NIWTE**

**LOCIG** H/GU 11.4, **IKUCI** H/GU 3.9, **NIWTE**

**LOCIG** H/GU 11.4, **IKUCI** H/GU 3.9, **NIWTE**

CATEGORY	A	B	C	D
S-ILS 17	4669-1/2		212 (300-1/2)	
S-LOC 17	4900-1/2	443 (500-1/2)	4900-7/8	443 (500-7/8)
<b>C</b> CIRCLING	4900-1 443 (500-1)	4940-1 483 (500-1)	4940-1 1/2 483 (500-1 1/2)	5060-2 603 (700-2)

SW-4, 11 OCT 2018 to 08 NOV 2018

SW-4, 11 OCT 2018 to 08 NOV 2018