

VORTAC IWA <b>113.3</b> Chan 80	APP CRS <b>302°</b>	Rwy Idg	30C	30R
		TDZE	<b>10201</b>	<b>9301</b>
			<b>1380</b>	<b>1382</b>
		Apt Elev	<b>1384</b>	<b>1384</b>

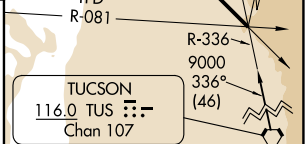
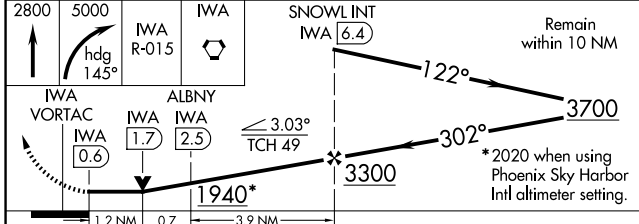
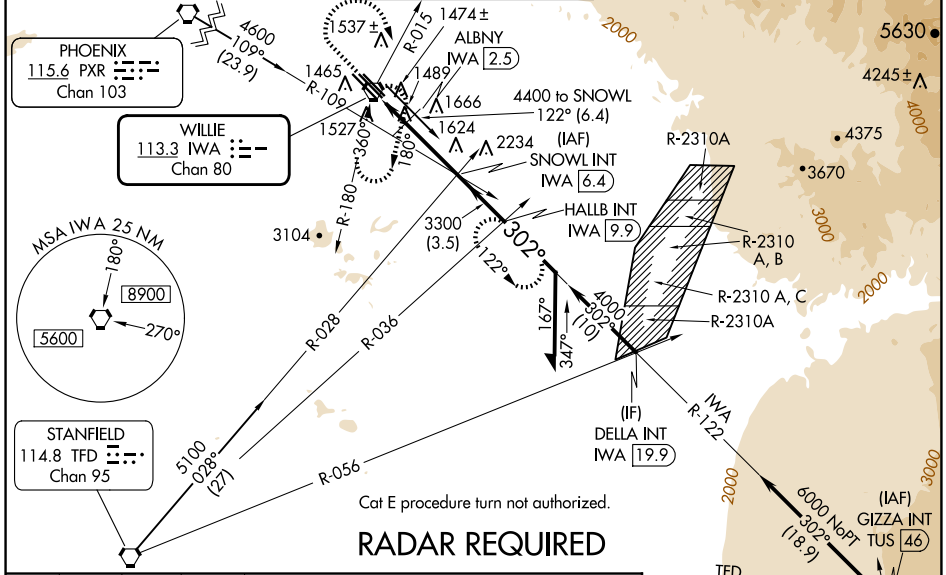
# VOR or TACAN RWY 30C

MESA GATEWAY (IWA)

**⚠** When local altimeter setting not received, use Phoenix Sky Harbor Intl altimeter setting and increase all MDA 80 feet, increase S-30C, SIDESTEP 30R, and Circling Cats C/D/E visibility ¼ SM.

**MISSED APPROACH:** Climb to 2800 then climbing right turn to 5000 via heading 145° and IWA VORTAC R-015 to IWA VORTAC and hold, continue climb-in-hold to 5000 (TACAN aircraft continue via IWA VORTAC R-122 to HALLB INT/IWA 9.9 DME and hold, continue climb-in-hold to 5000, hold SE, LT, 302° inbound).

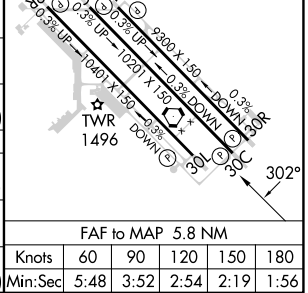
ATIS <b>133.5 270.275</b>	PHOENIX APP CON <b>124.9 353.8</b>	GATEWAY TOWER * <b>120.6 (CTAF) 289.4</b>	GND CON <b>128.25 275.8</b>	CLNC DEL <b>135.05</b>
------------------------------	---------------------------------------	--	--------------------------------	---------------------------



CATEGORY	A		B		C	D	E
	1940-1	560 (600-1)	1940-1	560 (600-1)	1940-1½	1940-1¾	1940-2
S-30C	1940-1	560 (600-1)	1940-1	560 (600-1)	1940-1½	1940-1¾	1940-2
SIDESTEP 30R	1940-1	558 (600-1)	1940-1	558 (600-1)	1940-1½	1940-2	558 (600-2)
CIRCLING	1940-1	556 (600-1)	1940-1	556 (600-1)	1940-1½	2000-2	2020-2¼
DME MINIMUMS							
S-30C	1800-1	420 (500-1)	1800-1¼	420 (500-1¼)	1800-1½	1800-1½	420 (500-1½)
SIDESTEP 30R	1800-1	418 (500-1)	1800-1	418 (500-1)	1800-1½	1800-2	418 (500-2)
CIRCLING	1880-1	496 (500-1)	1880-1½	496 (500-1½)	1880-1½	2000-2	2020-2¼

ELEV 1384 TDZE 30C 1380 TDZE 30R 1382

HIRL Rwy 12L-30R and 12C-30C  
REIL Rwy 12L and 30R  
MIRL Rwy 12R-30L



SW-4, 15 MAY 2025 to 12 JUN 2025

SW-4, 15 MAY 2025 to 12 JUN 2025

FAF to MAP 5.8 NM					
Knots	60	90	120	150	180
Min:Sec	5:48	3:52	2:54	2:19	1:56