

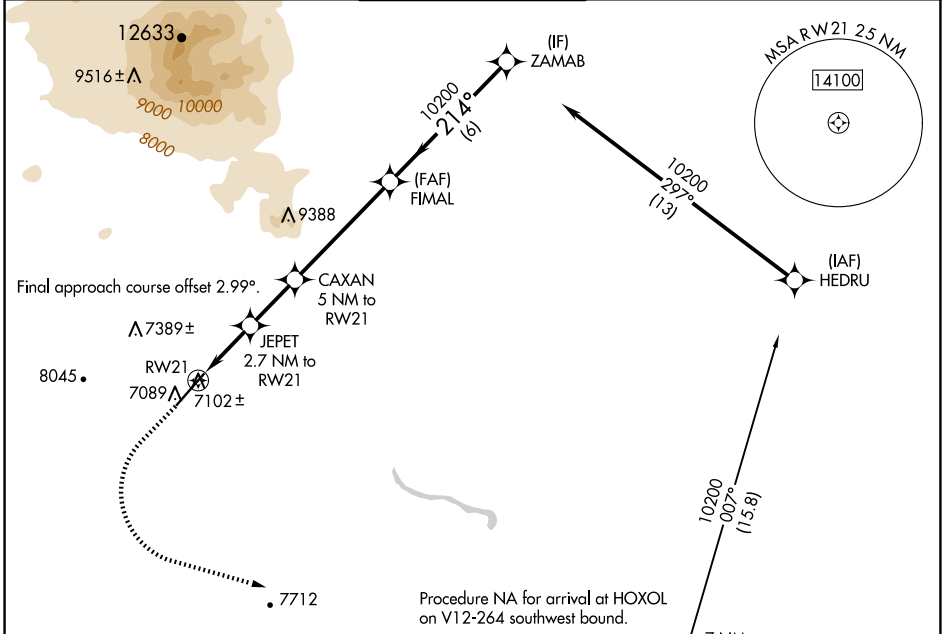
WAAS CH 99341 W21A	APP CRS 214°	Rwy Idg TDZE Apt Elev	7000 7003 7014
--	------------------------	-----------------------------	---

RNAV (GPS) RWY 21

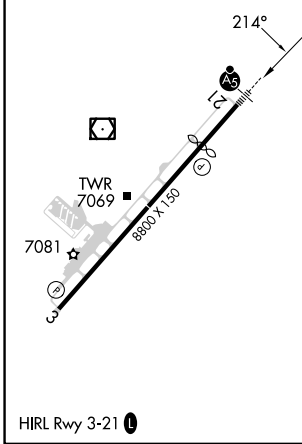
FLAGSTAFF PULLIAM (F.L.G)

<p>▼ For uncompensated Baro-VNAV systems, LNAV/VNAV NA below -19 °C (2°F) or above 44°C (111°F). DME/DME RNP-0.3 NA. ▲ For inop ALS, increase LPV all Cats visibility to 3/8 SM.</p>	<p>MALSR</p>	<p>MISSED APPROACH: Climb to 7500 then climbing left turn to 10800 direct HOXOL and hold.</p>
---	--------------	---

ATIS 125.8	PHOENIX APP CON 126.375 236.775	FLAGSTAFF TOWER ★ 134.55 (CTAF) 239.25	GND CON 121.9	UNICOM 122.95
----------------------	---	--	-------------------------	-------------------------



ELEV 7014	D	TDZE 7003
-----------	----------	-----------



7500	10800	HOXOL	FIMAL	ZAMAB
			10200	10200
*LNAV only		JEPET 2.7 NM to RW21	CAXAN 5 NM to RW21	
		1 NM to RW21	8640	GP 3.00° TCH 52
		7900*	214°	
		10200	10200	
		1 NM	1.7 NM	2.3 NM
		4.9 NM	6 NM	

CATEGORY	A	B	C	D
LPV DA		7258-1/2	255 (300-1/2)	
LNAV/VNAV DA		7319-5/8	316 (400-3/4)	
LNAV MDA	7360-1/2	357 (400-1/2)	7360-5/8	357 (400-3/4)
C CIRCLING	7520-1 506 (600-1)	7560-1 546 (600-1)	8100-3 1086 (1100-3)	8560-3 1546 (1600-3)

SW-4, 15 MAY 2025 to 12 JUN 2025

SW-4, 15 MAY 2025 to 12 JUN 2025