

TACAN ARH Chan 53 (111.6)	APP CRS 081°	Rwy ldg TDZE Apt Elev 12001 4719 4719
--	------------------------	---

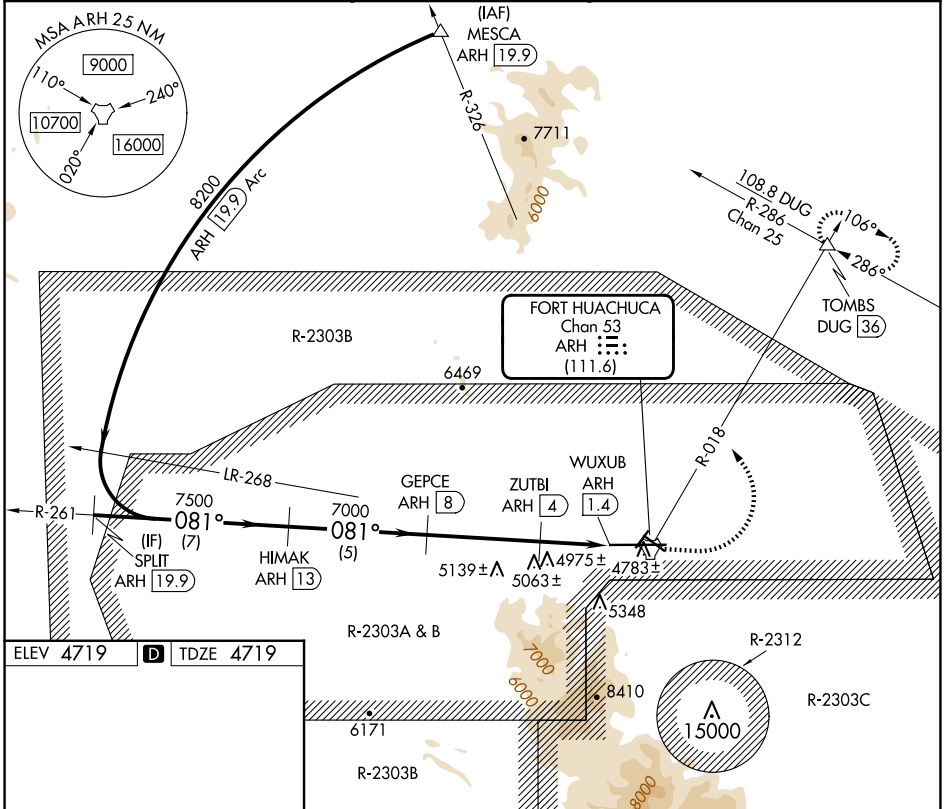
TACAN RWY 8

SIERRA VISTA MUNI-LIBBY AAF (FHU)

⚠ Circling NA south of Rws 8 and 30.

⚠ MISSED APPROACH: Climb to 5500 then climbing left turn to 9500 on ARH R-018 to TOMBS INT/DUG 36 DME and hold.

ATIS 134.75 263.025	LIBBY AAF GCA* 127.05 254.25	LIBBY TOWER* 124.95 (CTAF) 284.75	GND CON 121.7 268.7	UNICOM 122.95
-------------------------------	--	--	-------------------------------	-------------------------



ELEV 4719 **D** TDZE 4719

8200 081°

7500

7000

5620

3.20° TCH 50

SPLIT ARH [19.9]

HIMAK ARH [13]

GEPCE ARH [8]

ZUTBI ARH [4]

WUXUB ARH [1.4]

7 NM, 5 NM, 4 NM, 2.6 NM

4285 X 75, 12001 X 150, 4769, 2.0% UP, 1.0% DOWN, 1.0% UP, 30°

HIRL Rwy 8-26 **Ⓛ**
MIRL Rws 3-21 and 12-30 **Ⓛ**

5500, 9500, TOMBS

ARH R-018

TACAN

CATEGORY	A	B	C	D	E
S-8	5260-1 541 (600-1)	5260-1½ 541 (600-1½)	5260-1¾ 541 (600-1¾)	5260-2 541 (600-2)	5260-2 541 (600-2)
CIRCLING	5260-1 541 (600-1)	5260-1½ 541 (600-1½)	5280-2 561 (600-2)		

SW-4, 15 MAY 2025 to 12 JUN 2025

SW-4, 15 MAY 2025 to 12 JUN 2025