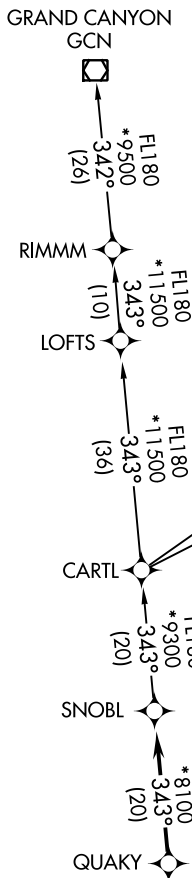


**TOP ALTITUDE:
ASSIGNED BY ATC**

ATIS 126.5
CLNC DEL 123.9
GND CON 121.8
DEER VALLEY TOWER* 118.4 (DEP Rwy 7R-25L)
120.2 (DEP Rwy 7L-25R)
PHOENIX DEP CON 120.7 239.0

TAKEOFF MINIMUMS

Rwys 7L/R: NA-obstacles.
Rwys 25L/R: Standard with minimum climb of 370' per NM to 4600.



- NOTE: RNAV 1.
- NOTE: Turbojets and turboprops only.
- NOTE: RADAR required.
- NOTE: GPS required.
- NOTE: JARPA TRANSITION ATC assigned only.
- NOTE: YOOPR TRANSITION ATC assigned only.
- NOTE: CARTL TRANSITION for FLG or PGA terminal arrivals only.
- NOTE: Aircraft departing from KGEU and KGYR ATC assigned only.

TAKEOFF OBSTACLE NOTES

Rwy 25L: Pole 1127' from DER, 498' right of centerline, 36' AGL/1475' MSL. Pole 1184' from DER, 495' left of centerline, 32' AGL/1471' MSL.
Rwy 25R: Multiple antennas beginning 1.4 NM from DER, 1847' right of centerline, up to 96' AGL/1806' MSL.

DEPARTURE ROUTE DESCRIPTION

TAKEOFF RUNWAYS 25L, 25R: Climbing right turn heading 320° or as assigned by ATC, thence. . . .

. . . . expect RADAR vectors to QUAKY, then on track 343° to SNOBL. Then on (transition), expect filed altitude 3 minutes after departure.

CARTL TRANSITION (SNOBL5.CARTL)

GRAND CANYON TRANSITION (SNOBL5.GCN)

JARPA TRANSITION (SNOBL5.JARPA)

RIMMM TRANSITION (SNOBL5.RIMMM)

YOOPR TRANSITION (SNOBL5.YOOPR)

NOTE: Chart not to scale.

SW-4, 01 MAR 2018 to 29 MAR 2018

SW-4, 01 MAR 2018 to 29 MAR 2018