

WAAS CH 90117 W25A	APP CRS 254°	Rwy Idg TDZE Apt Elev	7280 1475 1478
--	------------------------	-----------------------------	---

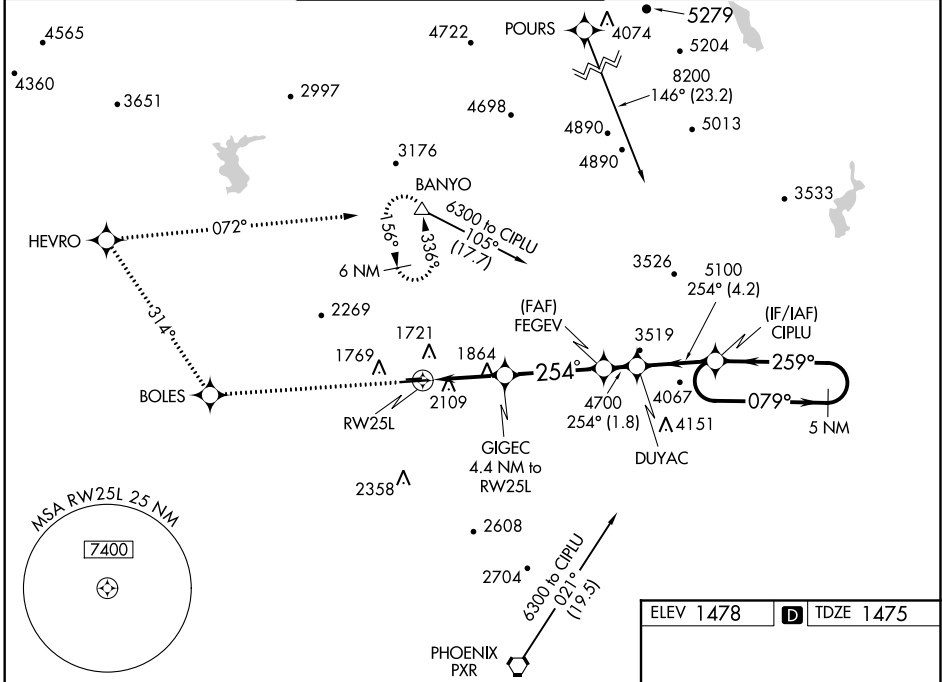
RNAV (GPS) RWY 25L

PHOENIX DEER VALLEY (DVT)

▼ DME/DME RNP-0.3 NA. Visibility reduction by helicopters NA.
▲ Circling NA north of Rwy 7R-25L at night. When VGS1 inoperative, Circling to Rwy 25R NA at night. If local altimeter setting not received, use Phoenix Sky Harbor Intl altimeter setting.

MISSED APPROACH: Climb to 6000 direct BOLES, and via 314° track to HEVRO, and right turn via 072° track to BANYO and hold.

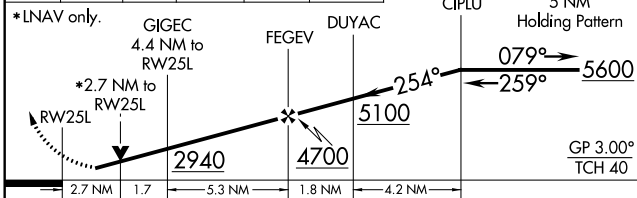
ATIS 126.5	PHOENIX APP CON 120.7 239.0	DEER VALLEY TOWER * 118.4 (070°-250°) (CTAF) 120.2 (251°-069°)	GND CON 121.8	CLNC DEL 123.9	UNICOM 122.95
----------------------	---------------------------------------	--	-------------------------	--------------------------	-------------------------



SW-4, 01 MAR 2018 to 29 MAR 2018

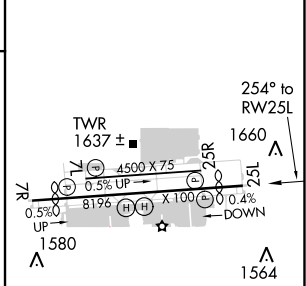
SW-4, 01 MAR 2018 to 29 MAR 2018

6000	BOLES	314° tr	HEVRO	072° tr	BANYO	VGS1 and RNAV glidepath not coincident (VGS1 Angle 3.00/TCH 38).
------	-------	---------	-------	---------	-------	--



CATEGORY	A	B	C	D
LPV DA	1850-1¼ 375 (400-1¼)			
LNAV MDA	2360-1¼	885 (900-1¼)	2360-2¾	885 (900-3)
CIRCLING	2400-1¼	2420-1¼	2420-2¾	2420-3
	922 (1000-1¼)	942 (1000-1¼)	942 (1000-2¾)	942 (1000-3)

ELEV 1478	TDZE 1475
-----------	-----------



MIRL Rwy 7L-25R and 7R-25L
 REIL Rwy 7L, 7R, 25L, and 25R