

WAAS CH 72917 W07A	APP CRS 074°	Rwy Idg TDZE Apt Elev	7298 1460 1478
--	------------------------	-----------------------------	---

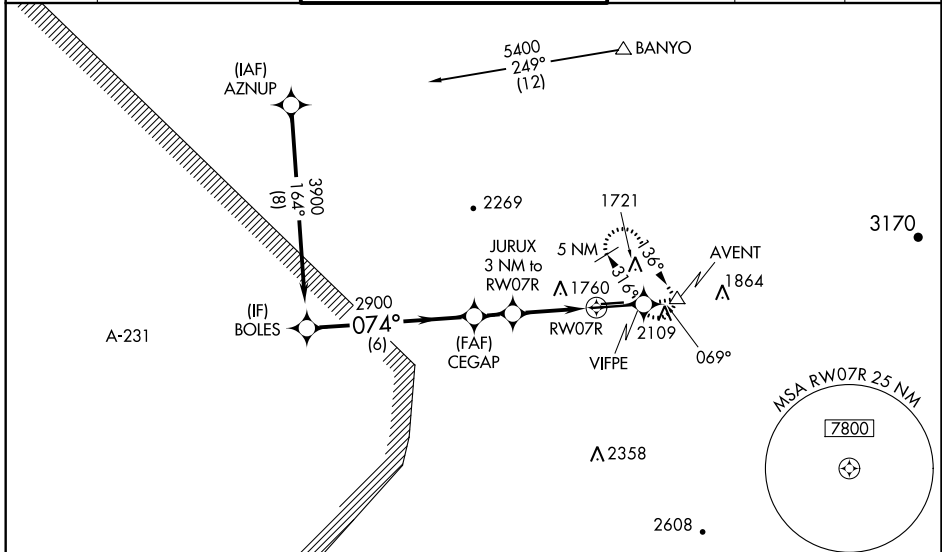
RNAV (GPS) RWY 7R

PHOENIX DEER VALLEY (DVT)

⚠ When VGSI inop, Circling Rwy 25R NA at night. Baro-VNAV NA when using Scottsdale altimeter setting. For uncompensated Baro-VNAV systems, LNAV/VNAV NA below -17°C (2°F) or above 45°C (113°F). DME/DME RNP-0.3 NA. VDP NA when using Scottsdale altimeter setting. When local altimeter setting not received, use Scottsdale altimeter setting: Increase LPV DA to 1822 and all visibilities ½ SM. Increase LNAV/VNAV DA to 2160, increase all MDA's 40 feet and increase Circling Cat B/C visibility ¼ mile. Circling NA north of Rwy 7R-25L at night.

MISSED APPROACH: Climb to 5000 direct VIFPE and track 069° to AVENT and hold, continue climb-in-hold to 5000. When directed by ATC, continue climb-in-hold to 7000.

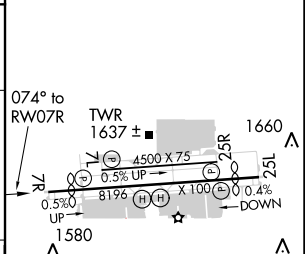
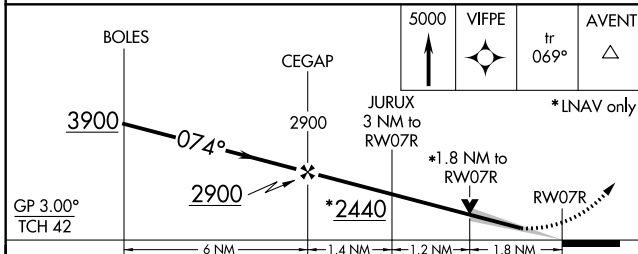
ATIS 126.5	PHOENIX APP CON 120.7 239.0	DEER VALLEY TOWER* 118.4 (070°-250°) (CTAF) 120.2 (251°-069°)	GND CON 121.8	CLNC DEL 123.9	UNICOM 122.95
----------------------	---------------------------------------	---	-------------------------	--------------------------	-------------------------



SW-4, 01 MAR 2018 to 29 MAR 2018

SW-4, 01 MAR 2018 to 29 MAR 2018

ELEV 1478	D TDZE 1460
-----------	--------------------



CATEGORY	A	B	C	D
LPV DA		1795-1½	335 (400-1½)	
LNAV/VNAV DA		2133-2½	673 (700-2½)	
LNAV MDA	2060-1	600 (600-1)	2060-1¾	600 (600-1¾)
CIRCLING	2400-1¼ 922 (1000-1¼)	2420-1¼ 942 (1000-1¼)	2420-2¾ 942 (1000-2¾)	2460-3 982 (1000-3)

MIRL Rwy 7L-25R and 7R-25L
REIL Rwy 7L, 7R, 25L, and 25R