

APP CRS 254°	Rwy Idg TDZE Apt Elev	N/A N/A 1478
------------------------	-----------------------------	---

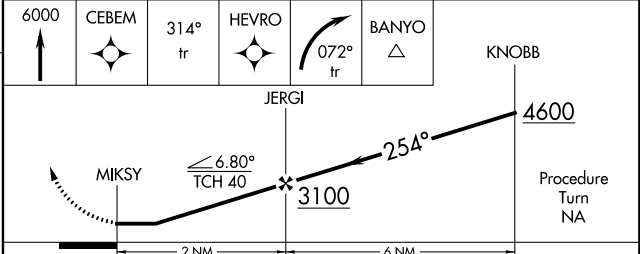
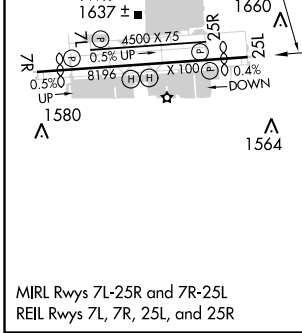
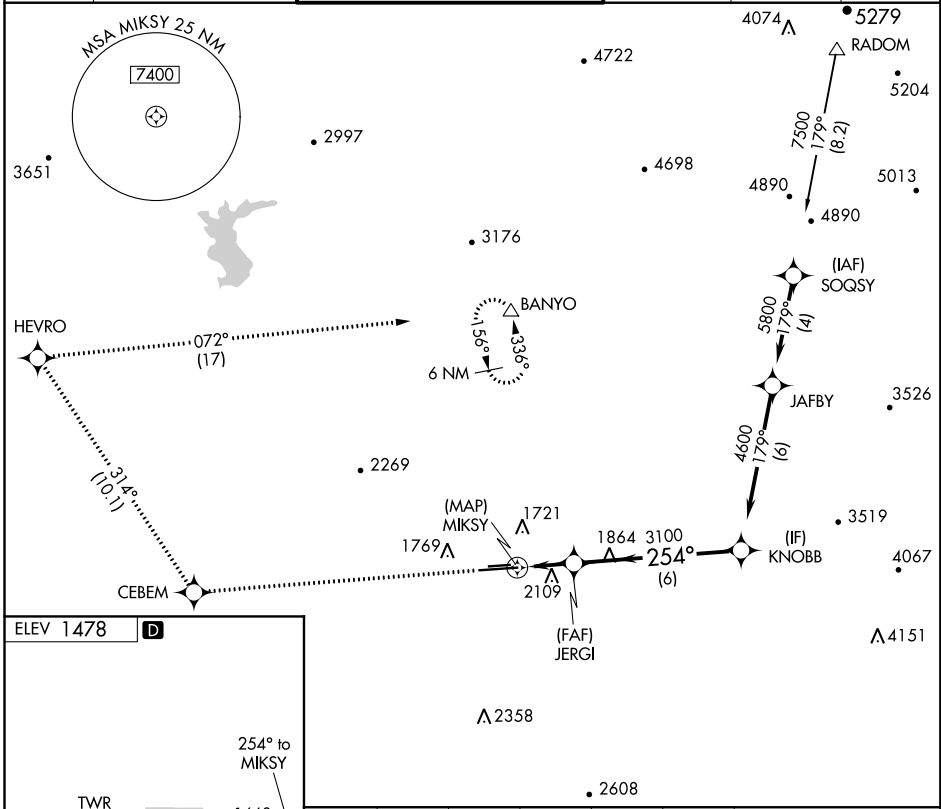
RNAV (GPS)-B

PHOENIX DEER VALLEY (DVT)

⚠ DME/DME RNP-0.3 NA. When VGSI inoperative, Circling to Rwy 25R NA at night. Circling not authorized at night north of Rwy 7R-25L. If local altimeter setting not received, use Phoenix Sky Harbor Intl altimeter setting and increase all MDAs 100 feet.

⚠ MISSED APPROACH: Climb to 6000 direct CEBEM and via 314° track to HEVRO, and right turn via 072° track to BANYO and hold.

ATIS 126.5	PHOENIX APP CON 120.7 239.0	DEER VALLEY TOWER ★ 118.4 (070°-250°) (CTAF) 120.2 (251°-069°)	GND CON 121.8	CLNC DEL 123.9	UNICOM 122.95
----------------------	---------------------------------------	--	-------------------------	--------------------------	-------------------------



CATEGORY	A	B	C	D
CIRCLING	2400-1¼ 922 (1000-1¼)	2420-1¼ 942 (1000-1¼)	2420-2¾ 942 (1000-2¾)	NA

SW-4, 09 NOV 2017 to 07 DEC 2017

SW-4, 09 NOV 2017 to 07 DEC 2017