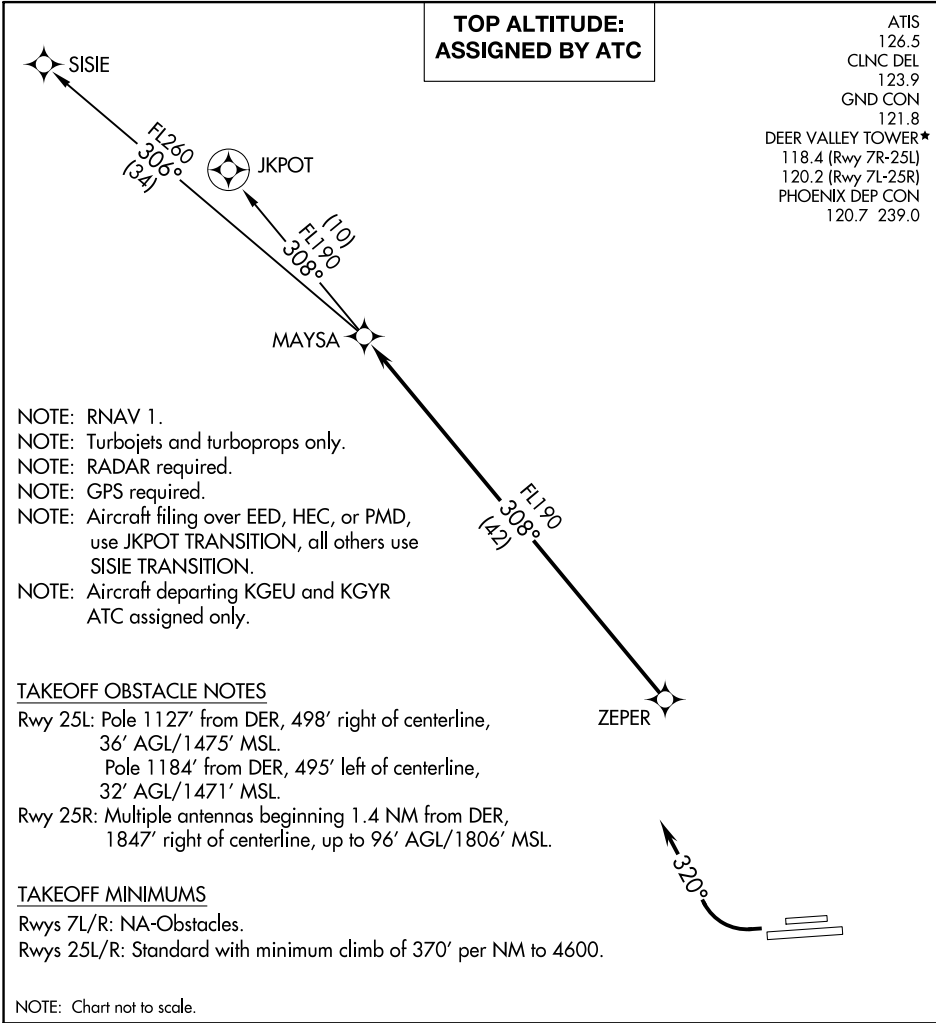


(MAYSA5.MAYSA) 16315

# MAYSA FIVE DEPARTURE (RNAV)

SL-6646 (FAA)

PHOENIX DEER VALLEY (DVT)  
PHOENIX, ARIZONA



- NOTE: RNAV 1.  
 NOTE: Turbojets and turboprops only.  
 NOTE: RADAR required.  
 NOTE: GPS required.  
 NOTE: Aircraft filing over EED, HEC, or PMD, use JKPOT TRANSITION, all others use SISIE TRANSITION.  
 NOTE: Aircraft departing KGEU and KGYR ATC assigned only.

### TAKEOFF OBSTACLE NOTES

- Rwy 25L: Pole 1127' from DER, 498' right of centerline, 36' AGL/1475' MSL.  
 Pole 1184' from DER, 495' left of centerline, 32' AGL/1471' MSL.  
 Rwy 25R: Multiple antennas beginning 1.4 NM from DER, 1847' right of centerline, up to 96' AGL/1806' MSL.

### TAKEOFF MINIMUMS

- Rwys 7L/R: NA-Obstacles.  
 Rwys 25L/R: Standard with minimum climb of 370' per NM to 4600.

NOTE: Chart not to scale.

## DEPARTURE ROUTE DESCRIPTION

TAKEOFF RUNWAYS 25L, 25R: Climbing right turn heading 320° or as assigned by ATC, thence. . .

. . . expect RADAR vectors to ZEPER, then on track 308° to MAYSA. Then on (transition), expect filed altitude 3 minutes after departure.

JKPOT TRANSITION (MAYSA5.JKPOT)

SISIE TRANSITION (MAYSA5.SISIE)

# MAYSA FIVE DEPARTURE (RNAV)

(MAYSA5.MAYSA) 10NOV16

PHOENIX, ARIZONA  
PHOENIX DEER VALLEY (DVT)

SW-4, 09 NOV 2017 to 07 DEC 2017

SW-4, 09 NOV 2017 to 07 DEC 2017