

SW-4, 09 NOV 2017 to 07 DEC 2017

**TOP ALTITUDE:
ASSIGNED BY ATC**

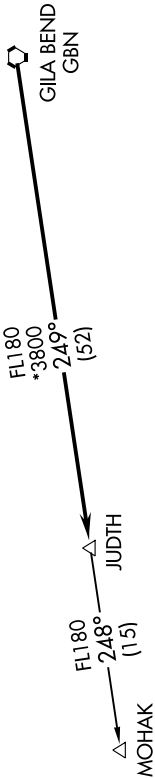
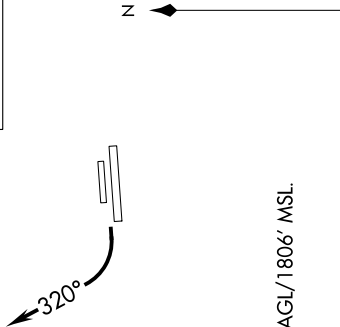
TAKEOFF MINIMUMS
Rwys 7L/R: NA - Obstacles.
Rwys 25L/R: Standard with minimum climb of 370' per NM to 4600.

- ATIS 126.5
- CLNC DEL 123.9
- GND CON 121.8
- DEER VALLEY TOWER** 118.4 (Rwy 7R-25L)
- 120.2 (Rwy 7L-25R)
- PHOENIX DEP CON 120.7 239.0

TAKEOFF OBSTACLE NOTES

Rwy 25L: Pole 1127' from DER, 498' right of centerline, 36' AGL/1475' MSL.
 Pole 1184' from DER, 495' left of centerline, 32' AGL/1471' MSL.
 Rwy 25R: Multiple antennas beginning 1.4 NM from DER, 1847' right of centerline, up to 96' AGL/1806' MSL.

- NOTE: RNAV 1.
- NOTE: Turbojets and turboprops only.
- NOTE: RADAR required.
- NOTE: GPS required.
- NOTE: Aircraft departing KGEU and KGYR ATC assigned only.



NOTE: Chart not to scale.

DEPARTURE ROUTE DESCRIPTION

TAKEOFF RWYS 25L/R: Climbing right turn heading 320° or as assigned by ATC. Thence
 expect RADAR vectors to GBN VORTAC, then on track 249° to JUDTH. Then on (transition), expect filed altitude 3 minutes after departure.

MOHAK TRANSITION (JUDTH6..MOHAK)

SW-4, 09 NOV 2017 to 07 DEC 2017