

SW-4, 09 NOV 2017 to 07 DEC 2017

**TOP ALTITUDE:
ASSIGNED BY ATC**

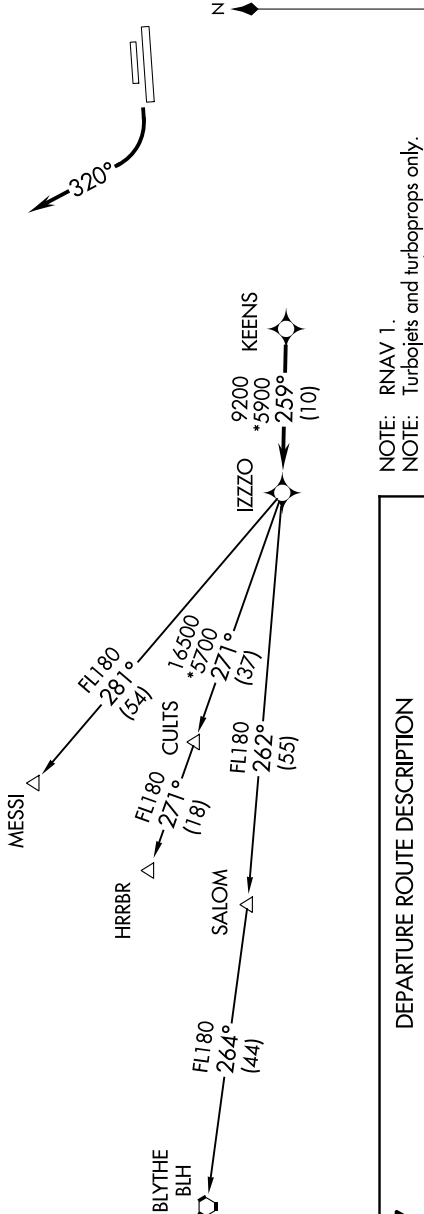
TAKEOFF OBSTACLE NOTES

Rwy 25L: Pole 1127' from DER, 498' right of centerline, 36' AGL/1475' MSL.
Pole 1184' from DER, 495' left of centerline, 32' AGL/1471' MSL.
Rwy 25R: Multiple antennas beginning 1.4 NM from DER, 1847' right of centerline, up to 96' AGL/1806' MSL.

TAKEOFF MINIMUMS

Rwys 7L/R: NA - Obstacles.
Rwys 25L/R: Standard with minimum climb of 370' per NM to 4600.

ATIS 126.5
CLNC DEL 123.9
GND CON 121.8
DEER VALLEY TOWER** 118.4 (Rwy 7R-25L)
120.2 (Rwy 7L-25R)
PHOENIX DEP CON 120.7 239.0



DEPARTURE ROUTE DESCRIPTION

TAKEOFF RWYS 25L/R: Climbing right turn heading 320° or as assigned by ATC. Thence,
. expect RADAR vectors to KEENS, then on track 259° to IZZO. Then on (transition), expect filed altitude 3 minutes after departure.

BLYTHE TRANSITION (IZZO06.BLH)
HRRBR TRANSITION (IZZO06.HRRBR)
MESSI TRANSITION (IZZO06.MESSI)

- NOTE: RNAV 1.
- NOTE: Turbojets and turboprops only.
- NOTE: RADAR required.
- NOTE: GPS required.
- NOTE: Aircraft requesting FL220 and below must file BLYTHE TRANSITION.
- NOTE: Turbojets landing LAX; file MESSI TRANSITION.
- NOTE: Aircraft landing other than LAX and turboprops landing at LAX: Requesting FL240 and above, file HRRBR TRANSITION.
- NOTE: Aircraft departing KGEU and KGYR ATC assigned only.

NOTE: Chart not to scale.

SW-4, 09 NOV 2017 to 07 DEC 2017