

(BNYRD5.BNYRD) 16315

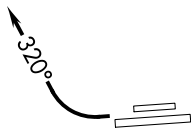
BNYRD FIVE DEPARTURE (RNAV)

SL-6646 (FAA)

PHOENIX DEER VALLEY (DVT)
PHOENIX, ARIZONA

**TOP ALTITUDE:
ASSIGNED BY ATC**

ATIS	126.5
CLNC DEL	123.9
GND CON	121.8
DEER VALLEY TOWER*	118.4 (Rwy 7R-25L)
	120.2 (Rwy 7L-25R)
PHOENIX DEP CON	120.7 239.0



- NOTE: RNAV 1.
- NOTE: Turbojets and turboprops only.
- NOTE: RADAR required.
- NOTE: GPS required.
- NOTE: Aircraft departing KGEU and KGYR ATC assigned only.

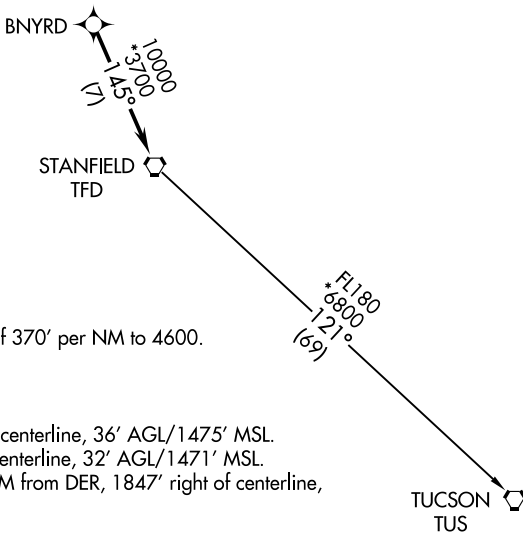
TAKEOFF MINIMUMS

Rwys 7L/R: NA - Obstacles.
 Rwys 25L/R: Standard with minimum climb of 370' per NM to 4600.

TAKEOFF OBSTACLE NOTES

Rwy 25L: Pole 1127' from DER, 498' right of centerline, 36' AGL/1475' MSL.
 Pole 1184' from DER, 495' left of centerline, 32' AGL/1471' MSL.
 Rwy 25R: Multiple antennas beginning 1.4 NM from DER, 1847' right of centerline, up to 96' AGL/1806' MSL.

NOTE: Chart not to scale.



DEPARTURE ROUTE DESCRIPTION

TAKEOFF RUNWAYS 25L, 25R: Climbing right turn heading 320° or as assigned by ATC, thence. . . .
 . . . expect RADAR vectors to BNYRD, then on track 145° to TFD VORTAC. Then on (transition), expect filed altitude 3 minutes after departure.

TUCSON TRANSITION (BNYRD5.TUS)

BNYRD FIVE DEPARTURE (RNAV)

(BNYRD5.BNYRD) 10NOV16

PHOENIX, ARIZONA
PHOENIX DEER VALLEY (DVT)

SW-4, 01 MAR 2018 to 29 MAR 2018

SW-4, 01 MAR 2018 to 29 MAR 2018