

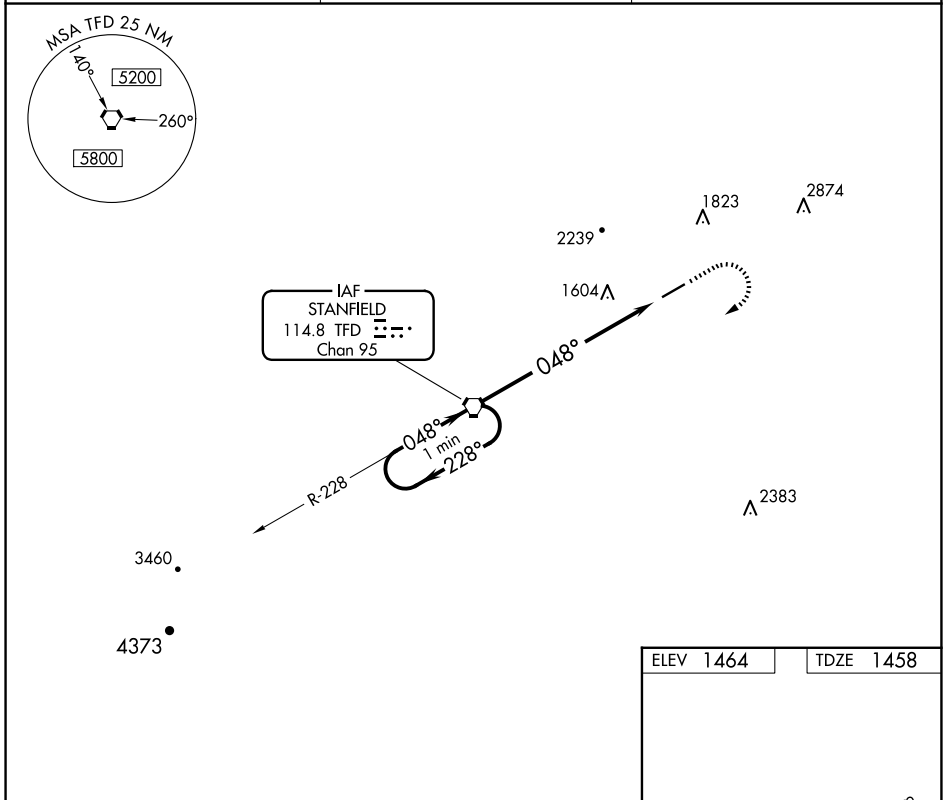
VORTAC TFD <b>114.8</b> Chan <b>95</b>	APP CRS <b>048°</b>	Rwy Idg TDZE <b>1458</b> Apt Elev <b>1464</b>
--	------------------------	---

# VOR RWY 5

CASA GRANDE MUNI (CGZ)

<p><b>▼</b> For inop ALS, increase S-5 Cats A/B visibility to 1 mile. Rwy 5 helicopter visibility reduction below 3/4 SM NA. Circling Rwy 23 NA at night.</p>	<p><b>MALSR</b></p>	<p><b>MISSED APPROACH:</b> Climb to 2200, then climbing right turn to 3500 direct TFD VORTAC and hold.</p>
---	---------------------	--

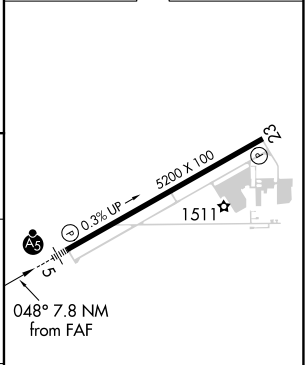
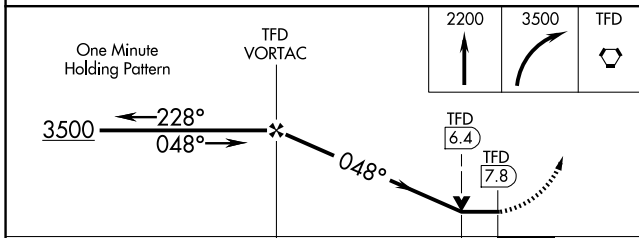
AWOS-3PT <b>132-175</b>	ALBUQUERQUE CENTER <b>125.4 269.3</b>	UNICOM <b>122.7 (CTAF) 0</b>
----------------------------	--	---------------------------------



SW-4, 15 MAY 2025 to 12 JUN 2025

SW-4, 15 MAY 2025 to 12 JUN 2025

ELEV 1464	TDZE 1458
-----------	-----------



CATEGORY	A	B	C	D
S-5	1960-3/4	502 (500-3/4)	NA	NA
<b>C</b> CIRCLING	1960-1	496 (500-1)	NA	NA

MIRL Rwy 5-23	FAF to MAP 7.8 NM				
Knots	60	90	120	150	180
Min:Sec	7:48	5:12	3:54	3:07	2:36