

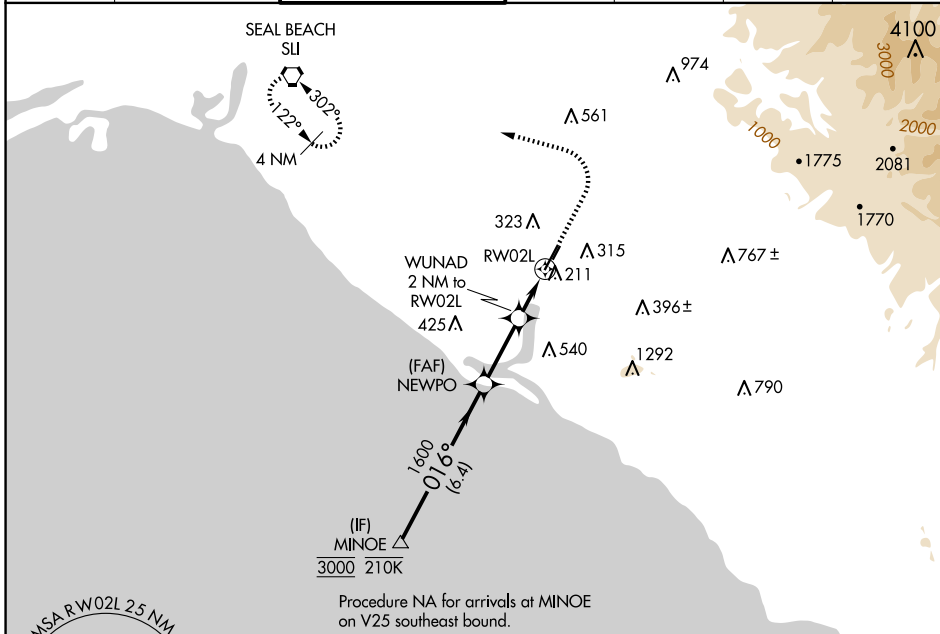
APP CRS	Rwy Idg	5700
016°	TDZE	56
	Apt Elev	56

RNAV (GPS) Y RWY 2L

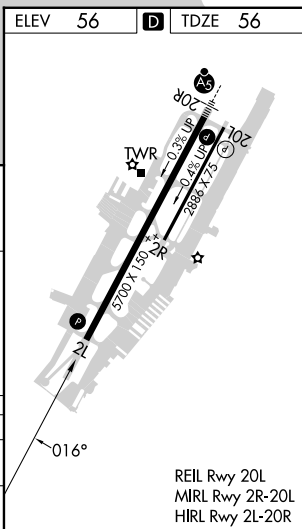
JOHN WAYNE/ORANGE COUNTY (SNA)

RNP APCH - GPS.		MISSED APPROACH: Climb to 800 then climbing left turn to 2600 direct SLI VORTAC and hold.			
Circling Rwy 20L NA at night.					

D-ATIS	SOCAL APP CON	JOHN WAYNE TOWER *	GND CON	CLNC DEL	CPDLC	UNICOM
126.0	121.3 263.1	126.8 (CTAF) 0 343.625	120.8	118.0		122.95



MINOE		VGSI and descent angles not coincident (VGSI Angle 3.00/TCH 75).		800	2600	SLI
3000		NEWPO		↑	↻	
016°		3.00° TCH 55		1.2 NM to RW02L	RW02L	
1600		780		0.8 NM	1.2 NM	
6.4 NM		2.7 NM				
CATEGORY	A	B	C	D		
LNVA MDA	520-1	464 (500-1)	520-1 3/8	464 (500-1 3/8)		
CIRCLING	640-1	584 (600-1)	840-2 1/4 784 (800-2 1/4)	1180-3 1124 (1200-3)		



SW-3, 15 MAY 2025 to 12 JUN 2025

SW-3, 15 MAY 2025 to 12 JUN 2025