

(MUSEL8.MUSEL) 23334  
**MUSEL EIGHT DEPARTURE**

JOHN WAYNE/ORANGE COUNTY (SNA)  
 SANTA ANA, CALIFORNIA

AL-377 (FAA)

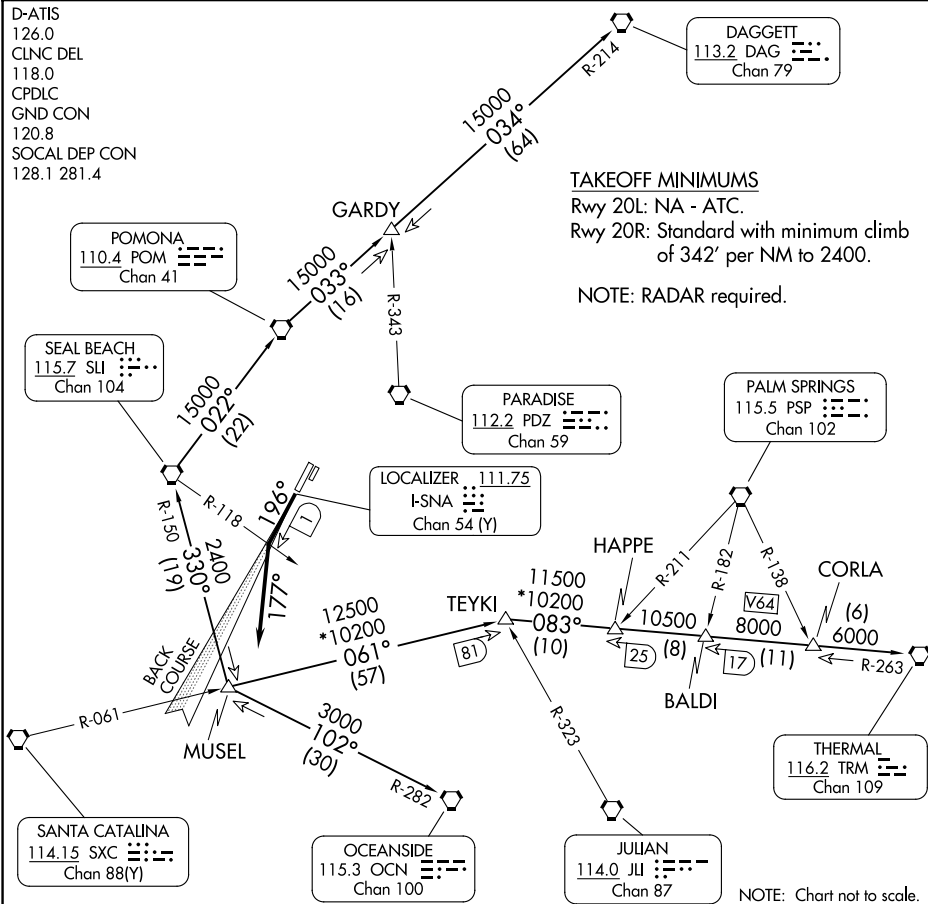
D-ATIS  
 126.0  
 CLNC DEL  
 118.0  
 CPDLC  
 GND CON  
 120.8  
 SOCAL DEP CON  
 128.1 281.4

DAGGETT  
 113.2 DAG  
 Chan 79

**TAKEOFF MINIMUMS**

Rwy 20L: NA - ATC.  
 Rwy 20R: Standard with minimum climb  
 of 342' per NM to 2400.

NOTE: RADAR required.



SW-3, 15 MAY 2025 to 12 JUN 2025

SW-3, 15 MAY 2025 to 12 JUN 2025

NOTE: Chart not to scale.

**DEPARTURE ROUTE DESCRIPTION**

**TAKEOFF RUNWAY 20R:** Climb heading 196° or I-SNA localizer south course to I-SNA 1 DME fix or SLI R-118, turn left heading 177° for vectors to MUSEL INT.

Thence . . . .  
 . . . . on (transition) or (assigned route). Expect filed altitude ten minutes after departure.

**DAGGETT TRANSITION (MUSEL8.DAG):** From over MUSEL INT on SLI R-150 to SLI VORTAC, then on SLI R-022 to POM VORTAC, then on POM R-033 to GARDY INT and on DAG R-214 to DAG VORTAC.

**OCEANSIDE TRANSITION (MUSEL8.OCN):** From over MUSEL INT on OCN R-282 to OCN VORTAC.

**SEAL BEACH TRANSITION (MUSEL8.SLI):** From over MUSEL INT on SLI R-150 to SLI VORTAC.

**THERMAL TRANSITION (MUSEL8.TRM):** From over MUSEL INT on SXC R-061 to TEYKI INT and TRM R-263 to TRM VORTAC.

**MUSEL EIGHT DEPARTURE**  
 (MUSEL8.MUSEL) 10NOV16

SANTA ANA, CALIFORNIA  
 JOHN WAYNE/ORANGE COUNTY (SNA)