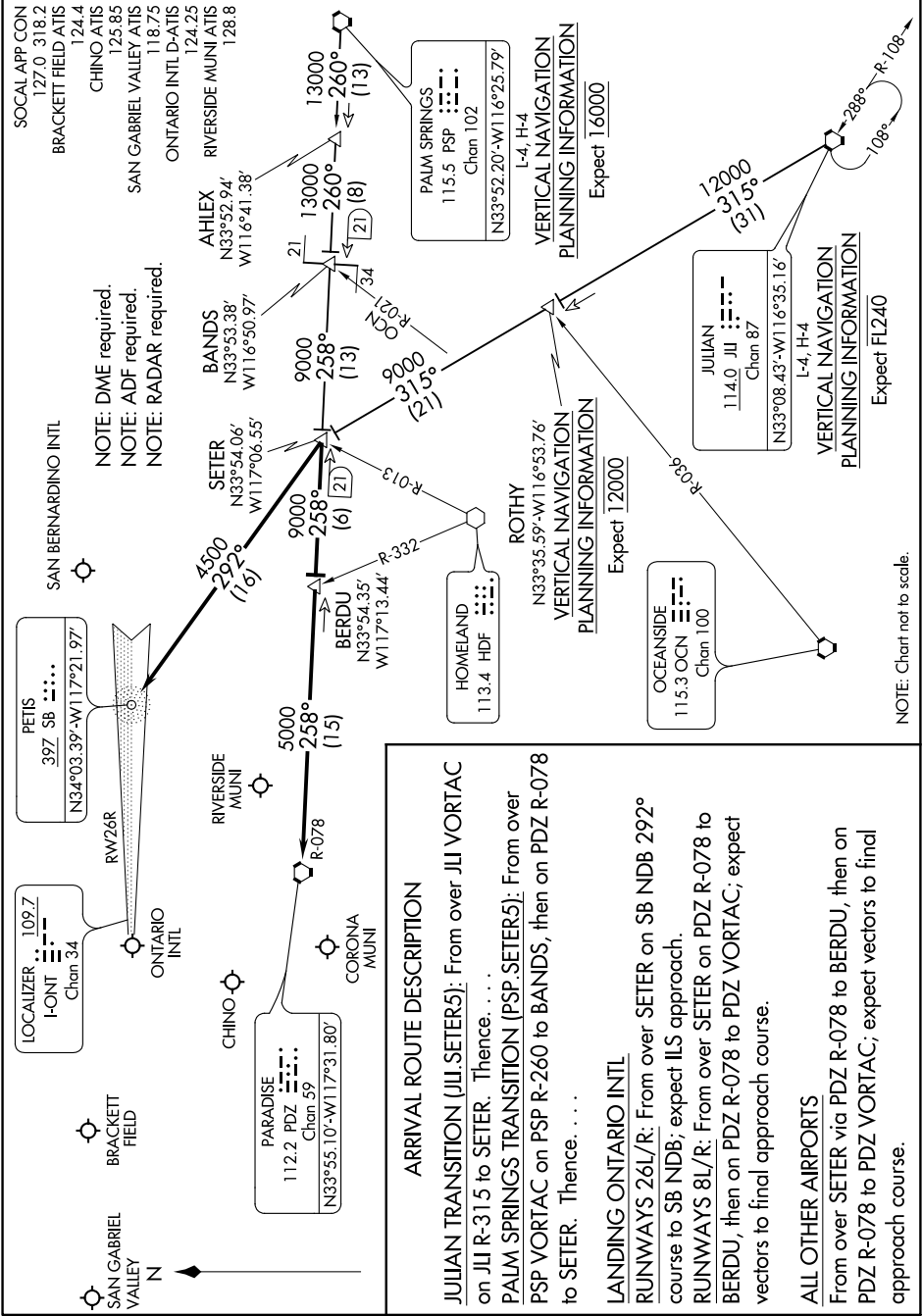


SETER FIVE ARRIVAL

AL-965 (FAA)

ONTARIO, CALIFORNIA

SW-3, 07 DEC 2017 to 04 JAN 2018



NOTE: DME required.
 NOTE: ADF required.
 NOTE: RADAR required.

ARRIVAL ROUTE DESCRIPTION

JULIAN TRANSITION (JLI.SETER5): From over JLI VORTAC on JLI R-315 to SETER. Thence, . . .
PALM SPRINGS TRANSITION (PSP.SETER5): From over PSP VORTAC on PSP R-260 to BANDS, then on PDZ R-078 to SETER. Thence, . . .

LANDING ONTARIO INTL
RUNWAYS 26L/R: From over SETER on SB NDB 292° course to SB NDB; expect ILS approach.
RUNWAYS 8L/R: From over SETER on PDZ R-078 to BERDU, then on PDZ R-078 to PDZ VORTAC; expect vectors to final approach course.

ALL OTHER AIRPORTS
 From over SETER via PDZ R-078 to BERDU, then on PDZ R-078 to PDZ VORTAC; expect vectors to final approach course.

NOTE: Chart not to scale.

SW-3, 07 DEC 2017 to 04 JAN 2018

SETER FIVE ARRIVAL

ONTARIO, CALIFORNIA