

LOC I-POC <b>110.5</b>	APP CRS <b>259°</b>	Rwy Idg <b>4151</b>
		TDZE <b>1005</b>
		Apt Elev <b>1011</b>

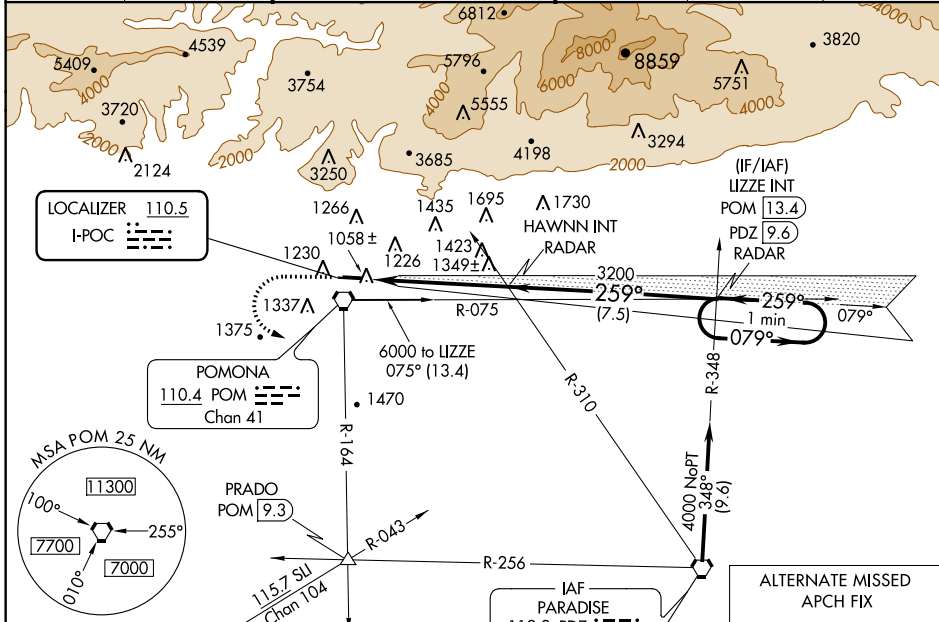
# LOC RWY 26L

BRACKETT FIELD (POC)

**⚠** Helicopter visibility reduction below 3/4 SM not authorized. When local altimeter setting not received, use Ontario Intl altimeter setting and increase all MDAs 40 feet. Night landing: Rwy 8L NA, Rwy 8R operational VGSI required, remain on or above VGSI glidepath until threshold.

**⚠** MISSED APPROACH: Climb to 2100 then climbing left turn to 4000 via POM VORTAC R-164 to PRADO INT/POM 9.3 DME.

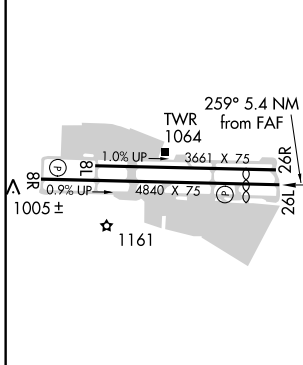
ATIS <b>124.4</b>	SOCAL APP CON <b>125.5 318.2</b>	BRACKETT TOWER* RWY 8R/26L <b>118.2 (CTAF)</b>	RWY 8L/26R <b>133.3</b>	GND CON <b>125.0</b>	CLNC DEL <b>121.875</b>	UNICOM <b>122.95</b>
----------------------	-------------------------------------	--	----------------------------	-------------------------	----------------------------	-------------------------



SW-3, 17 AUG 2017 to 14 SEP 2017

SW-3, 17 AUG 2017 to 14 SEP 2017

ELEV 1011	TDZE 1005
-----------	-----------



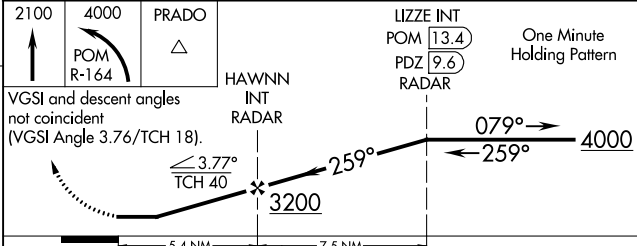
Procedure NA for arrivals at PDZ VORTAC on airway radials 292 CW 030.

ALTERNATE MISSED APCH FIX  
PARADISE PDZ 112.2 Chan 59  
078°  
258°  
R-078

REIL Rwy 8R and 26L  
MIRL Rwy 8R-26L

FAF to MAP 5.4 NM

Knots	60	90	120	150	180
Min:Sec	5:24	3:36	2:42	2:10	1:48



VGSI and descent angles not coincident (VGSI Angle 3.76/TCH 18).	3.77° TCH 40	259°	079°	4000
	5.4 NM	7.5 NM		
CATEGORY	A	B	C	D
S-26L	1600-1	595 (600-1)		NA
CIRCLING	1680-1	669 (700-1)		NA