

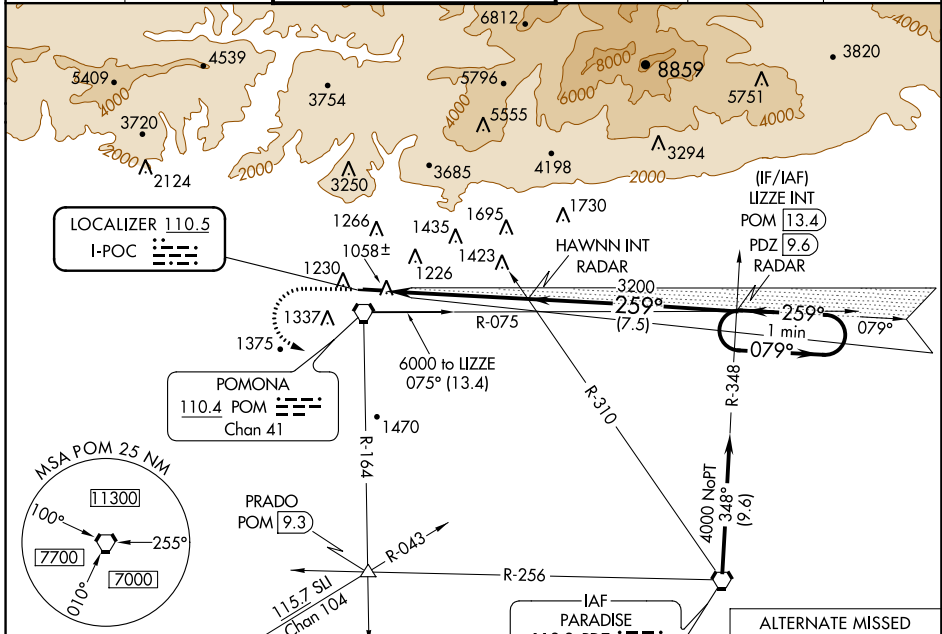
LOC I-POC <b>110.5</b>	APP CRS <b>259°</b>	Rwy Idg TDZE Apt Elev <b>4151</b> <b>1005</b> <b>1011</b>
---------------------------	------------------------	--

# ILS RWY 26L

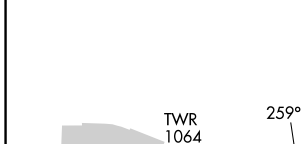
BRACKETT FIELD (POC)

**⚠** Helicopter visibility reduction below 3/4 SM not authorized.  
**⚠** When local altimeter setting not received, use Ontario Intl altimeter setting and increase DA to 1366.  
**MISSED APPROACH:** Climb to 2100, then climbing left turn to 4000 via POM VORTAC R-164 to PRADO INT/POM 9.3 DME.

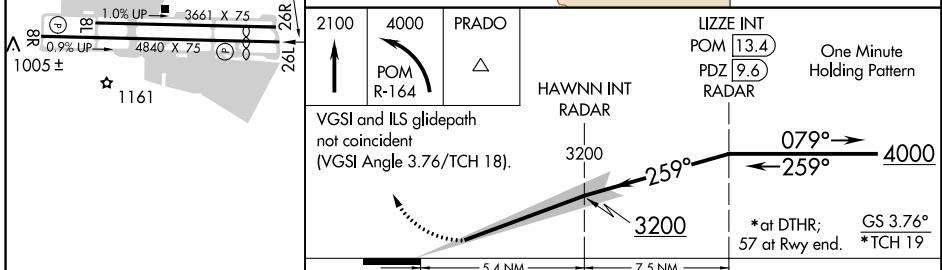
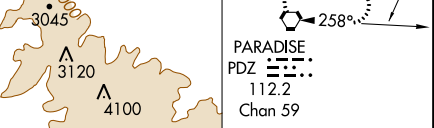
ATIS <b>124.4</b>	SOCAL APP CON <b>125.5 318.2</b>	BRACKETT TOWER* RWY 8R/26L RWY 8L/26R <b>118.2</b> (CTAF) <b>133.3</b>	GND CON <b>125.0</b>	CLNC DEL <b>121.875</b>	UNICOM <b>122.95</b>
----------------------	-------------------------------------	--	-------------------------	----------------------------	-------------------------



ELEV 1011	TDZE 1005
-----------	-----------



Procedure NA for arrivals at PDZ VORTAC on airway radials 292 CW 030.  
 When GS not used, use LOC RWY 26L procedure.



REIL Rws 8R and 26L MIRL Rwy 8R-26L	CATEGORY	A	B	C	D
	S-ILS 26L	1335-1 330 (400-1)		NA	

SW-3, 17 AUG 2017 to 14 SEP 2017

SW-3, 17 AUG 2017 to 14 SEP 2017