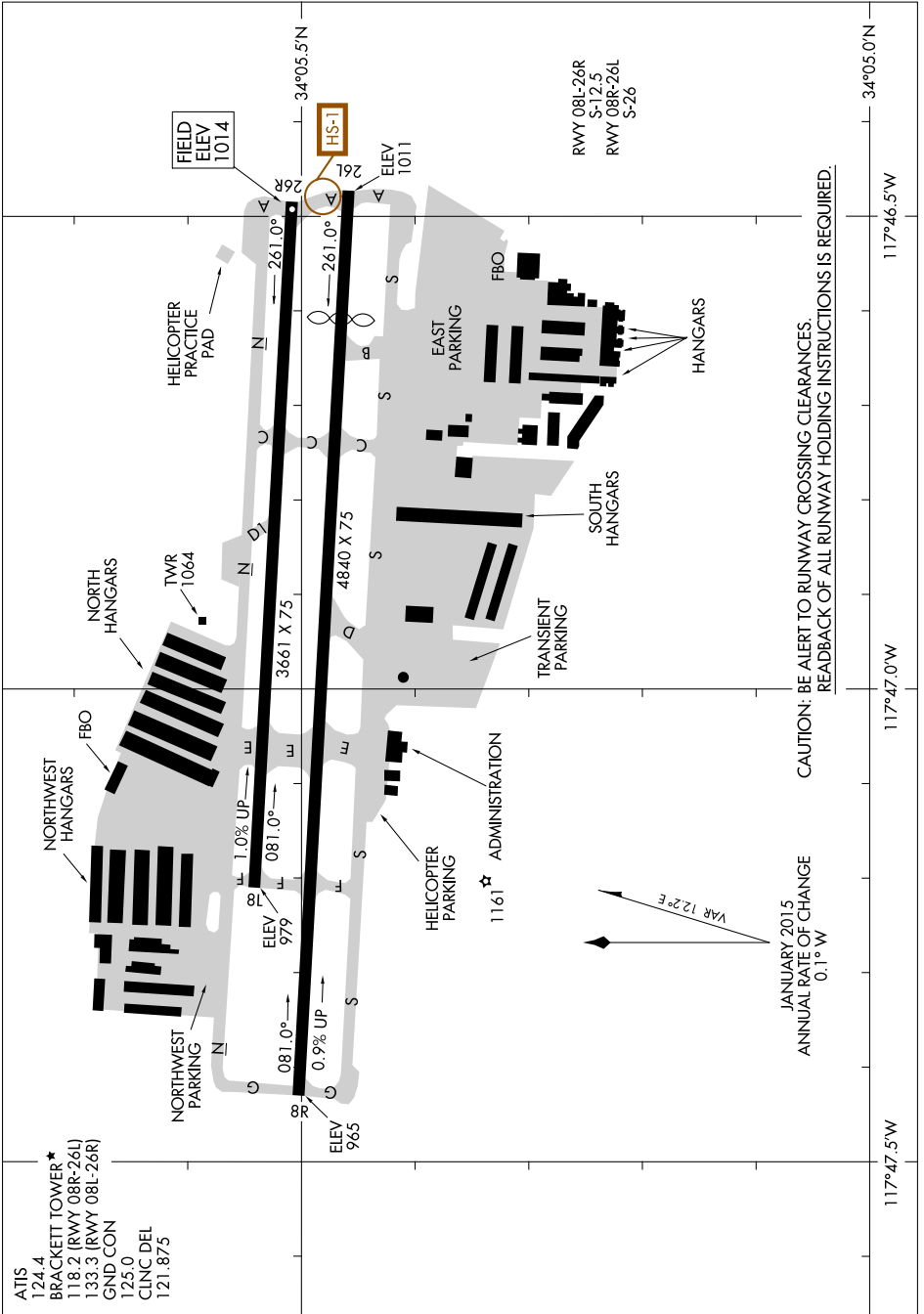


AIRPORT DIAGRAM

AL-5218 (FAA)

BRACKETT FIELD (POC)
LA VERNE, CALIFORNIA



SW-3, 22 JUN 2017 to 20 JUL 2017

SW-3, 22 JUN 2017 to 20 JUL 2017

AIRPORT DIAGRAM

LA VERNE, CALIFORNIA
BRACKETT FIELD (POC)

ATIS
 124.4
 BRACKETT TOWER ★
 118.2 (RWY 08R-26L)
 133.3 (RWY 08L-26R)
 GND CON
 125.0
 CLNC DEL
 121.8/7.5

JANUARY 2015
 ANNUAL RATE OF CHANGE
 0.1°W

CAUTION: BE ALERT TO RUNWAY CROSSING CLEARANCES
 READBACK OF ALL RUNWAY HOLDING INSTRUCTIONS IS REQUIRED.