
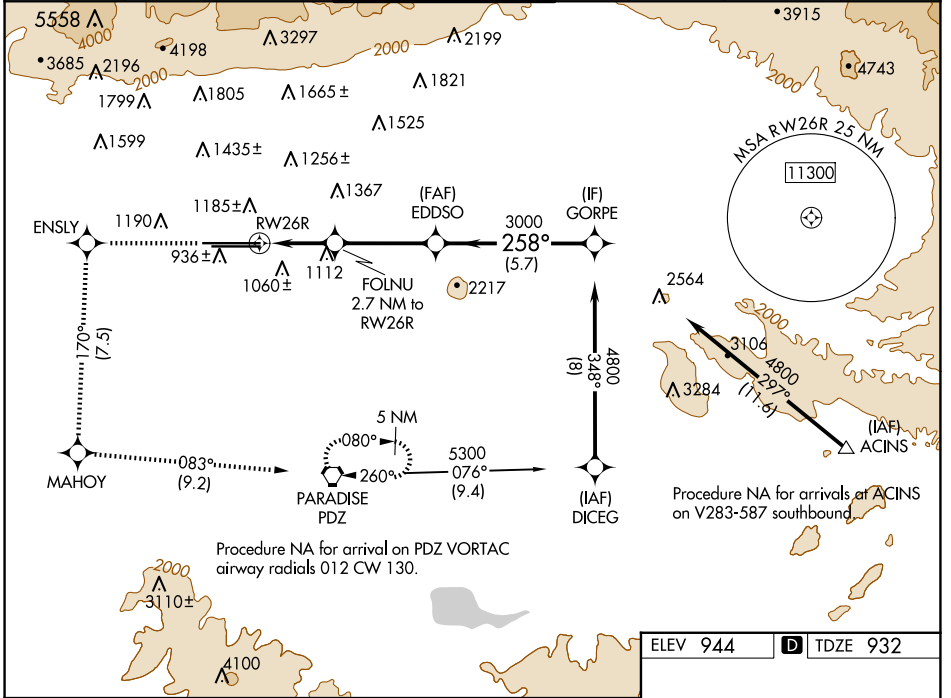


WAAS CH 53406 W26A	APP CRS 258°	Rwy Idg 12197 TDZE 932 Apt Elev 944
--	------------------------	--

RNAV (GPS) Y RWY 26R

ONTARIO INTL (ONT)

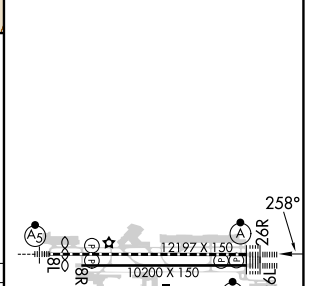
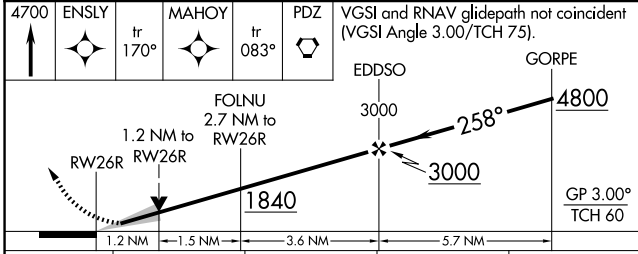
RNP APCH - GPS.		ONTARIO TOWER		GND CON		CLNC DEL		CPDLC
<p>⚠ Circling NA north of Rwy 8L-26R. For uncompensated Baro-VNAV systems, procedure NA below 2°C or above 54°C.</p>		<p>ALSF-2</p> 		<p>MISSED APPROACH: Climb to 4700 direct ENSLY and on track 170° to MAHOY and on track 083° to PDZ VORTAC and hold, continue climb-in-hold to 4700.</p>				
D-ATIS 124.25	SOCAL APP CON 127.0 318.2	120.6 360.775		121.9 257.8		132.9		



SW-3, 15 MAY 2025 to 12 JUN 2025

SW-3, 15 MAY 2025 to 12 JUN 2025

ELEV 944	D TDZE 932
----------	-------------------



CATEGORY	A	B	C	D
LPV DA		1132/18	200 (200-½)	
LNAV/VNAV DA		1267/55	335 (400-1)	
LNAV MDA	1380/24	448 (500-½)	1380/45	448 (500-¾)
C CIRCLING	1400-1	456 (500-1)	1500-1½ 556 (600-1½)	1540-2 596 (600-2)

GP 3.00°
TCH 60

TDZ/CL Rwys 8L, 26L and 26R
HIRL Rwys 8L-26R and 8R-26L