

LOC/DME I-UKI	APP CRS	Rwy Idg	<b>4423</b>
<b>109.1</b>	<b>155°</b>	TDZE	<b>617</b>
Chan <b>28</b>		Apt Elev	<b>617</b>

# LOC RWY 15

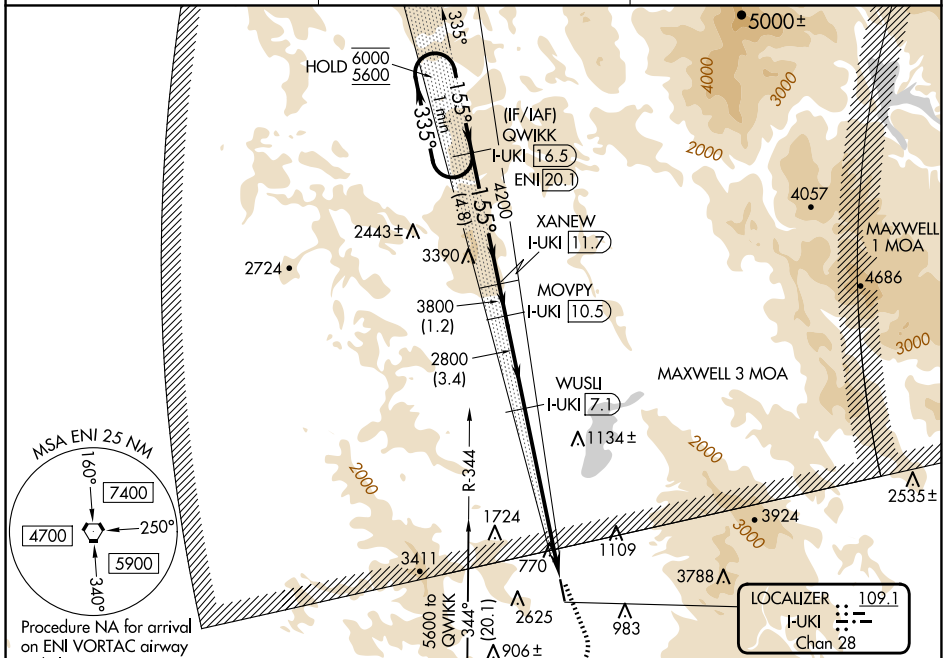
UKIAH MUNI (UKI)

DME required.

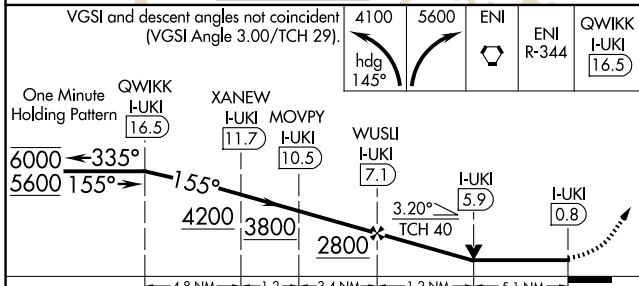
**▼** Circling NA southwest of Rwy 15-33. Circling Rwy 33 NA at night. Rwy 15 helicopter visibility reduction below 3/4 SM NA. When local altimeter setting not received, procedure NA.

**▲** MISSED APPROACH: Climbing left turn to 4100 on heading 145° then climbing right turn to 5600 direct ENI VORTAC and on ENI VORTAC R-344 to QWIKK /I-UKI 16.5 DME and hold.

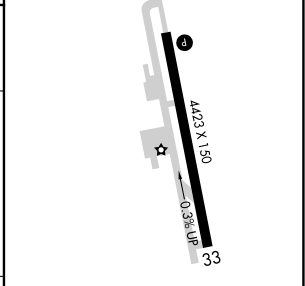
ASOS <b>119.275</b>	OAKLAND CENTER <b>127.8 353.5</b>	UNICOM <b>123.0 (CTAF) 1</b>
------------------------	--------------------------------------	---------------------------------



MENDOCINO 112.3 ENI Chan 70	WUSLI I-UKI [7.1]	MOVPI I-UKI [10.5]	XANEW I-UKI [11.7]	QWIKK I-UKI [16.5]	ENI R-344	ENI	ENI	QWIKK I-UKI [16.5]
-----------------------------------	----------------------	-----------------------	-----------------------	-----------------------	-----------	-----	-----	-----------------------



ELEV 617	TDZE 617
	155°



CATEGORY	A	B	C	D
S-LOC 15	2300-1¼ 1683 (1700-1¼)	2300-1½ 1683 (1700-1½)	2300-3 1683 (1700-3)	
<b>☐</b> CIRCLING	2300-1¼ 1683 (1700-1¼)	2300-1½ 1683 (1700-1½)	2300-3 1683 (1700-3)	2780-3 2163 (2200-3)

MIRL Rwy 15-33

REIL Rws 15 and 33

FAF to MAP 6.3 NM

Knots	60	90	120	150	180
Min:Sec	6:18	4:12	3:09	2:31	2:06

SW-2, 15 MAY 2025 to 12 JUN 2025

SW-2, 15 MAY 2025 to 12 JUN 2025