

LOC I-SNS 108.5	APP CRS 315°	Rwy ldg TDZE Apt Elev	4825 82 84
---------------------------	------------------------	-----------------------------	---------------------------------------

ILS RWY 31

SALINAS MUNI (SNS)

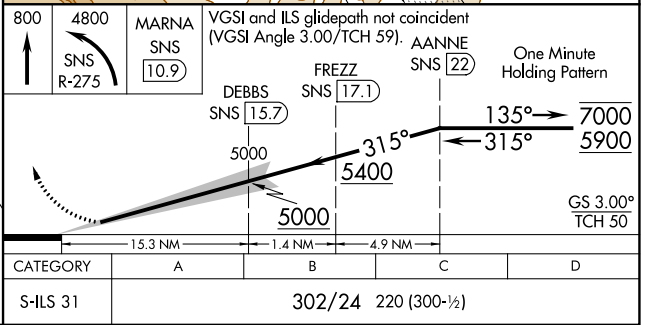
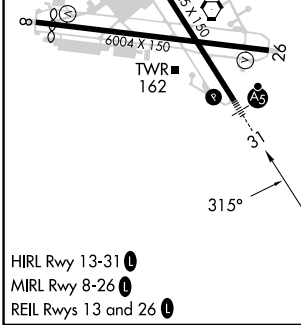
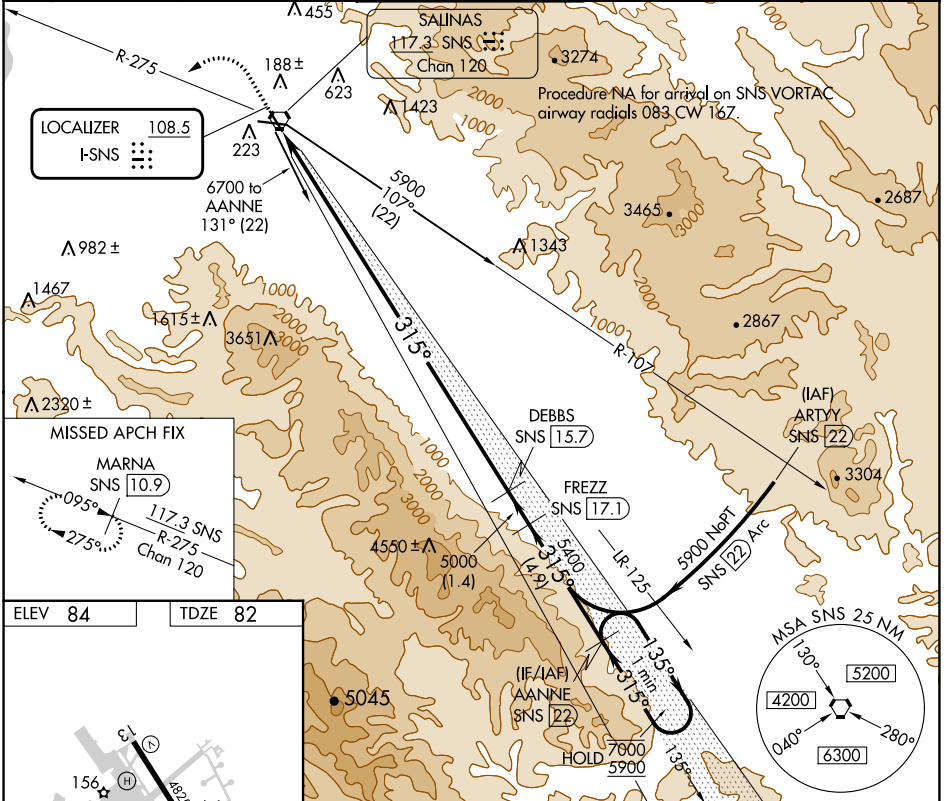
DME required.

When local altimeter setting not received, use Monterey altimeter setting and increase S-ILS 31 DA to 355 feet. For inop ALS when using Monterey altimeter setting, increase S-ILS 31 visibility to RVR 4500. DME from SNS VORTAC. DME use requires simultaneous reception of I-SNS and SNS DME.

MALSR

MISSED APPROACH: Climb to 800 then climbing left turn to 4800 on SNS VORTAC R-275 to MARNA/SNS 10.9 DME and hold, continue climb-in-hold to 4800.

ATIS 124.85	NORCAL APP CON 133.0 251.15	SALINAS TOWER* 119.525 (CTAF) 0 239.3	GND CON 121.7	UNICOM 123.0
-----------------------	---------------------------------------	---	-------------------------	------------------------



SALINAS, CALIFORNIA
Amdt 6 19MAY22

36°40'N-121°36'W

SALINAS MUNI (SNS)
ILS RWY 31

SW-2, 18 APR 2024 to 16 MAY 2024

SW-2, 18 APR 2024 to 16 MAY 2024