

LOC I-SNS 108.5	APP CRS 315°	Rwy Idg TDZE Apt Elev	4825 82 84
---------------------------	------------------------	-----------------------------	---------------------------------------

ILS RWY 31

SALINAS MUNI (SNS)

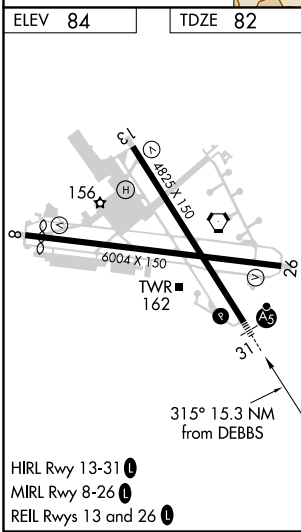
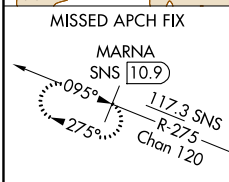
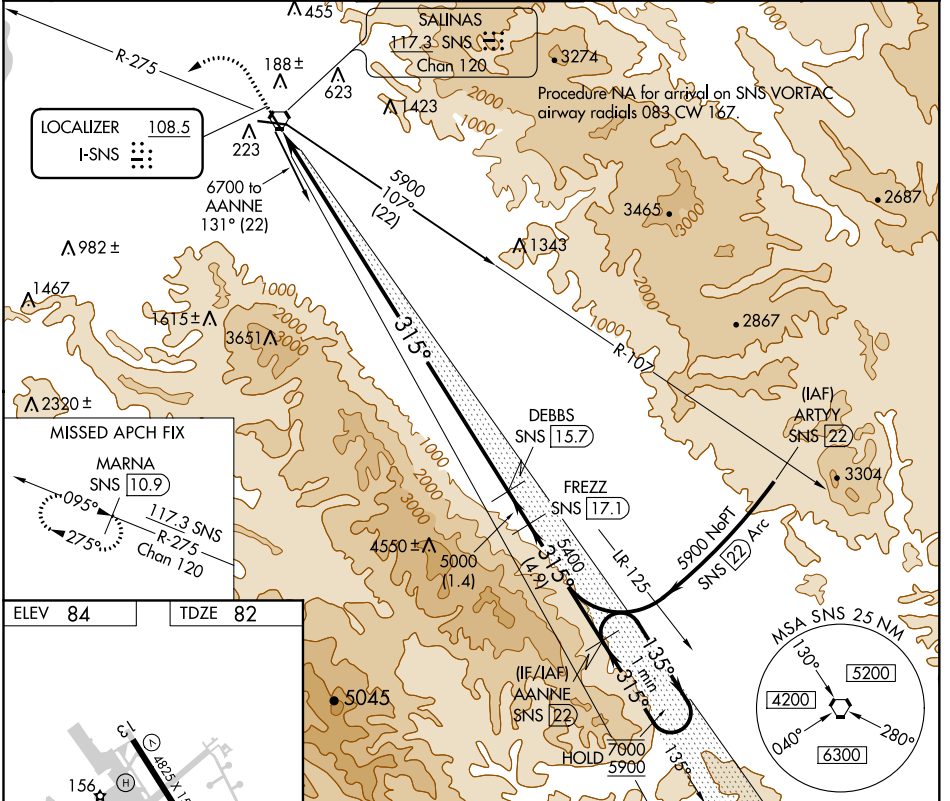
DME required.

When local altimeter setting not received, use Monterey altimeter setting and increase S-ILS 31 DA to 355 feet. For inop ALS when using Monterey altimeter setting, increase S-ILS 31 visibility to RVR 4500. DME from SNS VORTAC. DME use requires simultaneous reception of I-SNS and SNS DME.

MALS R

MISSED APPROACH: Climb to 800 then climbing left turn to 4800 on SNS VORTAC R-275 to MARNA/SNS 10.9 DME and hold, continue climb-in-hold to 4800.

ATIS 124.85	NORCAL APP CON 133.0 251.15	SALINAS TOWER* 119.525 (CTAF) 0 239.3	GND CON 121.7	UNICOM 122.95
-----------------------	---------------------------------------	---	-------------------------	-------------------------



800	4800	MARNA SNS 10.9	VGSI and ILS glidepath not coincident (VGSI Angle 3.00/TCH 59). AANNE SNS (22)	One Minute Holding Pattern
↑	SNS R-275		FREZZ SNS (17.1)	
		DEBBS SNS (15.7)		
		5000	315°	135° → 7000
		5400		← 315° 5900
		5000		GS 3.00° TCH 50
		15.3 NM	1.4 NM	4.9 NM
CATEGORY	A	B	C	D
S-ILS 31		302/24 220 (300-½)		

SW-2, 08 SEP 2022 to 06 OCT 2022

SW-2, 08 SEP 2022 to 06 OCT 2022