

LOC/DME I-SJC 110.9 Chan 46	APP CRS 306°	Rwy ldg TDZE Apt Elev	30L 7614 57 62	30R 7597 55 62
---	------------------------	-----------------------------	--	--

ILS or LOC RWY 30L

NORMAN Y MINETA SAN JOSE INTL (SJC)

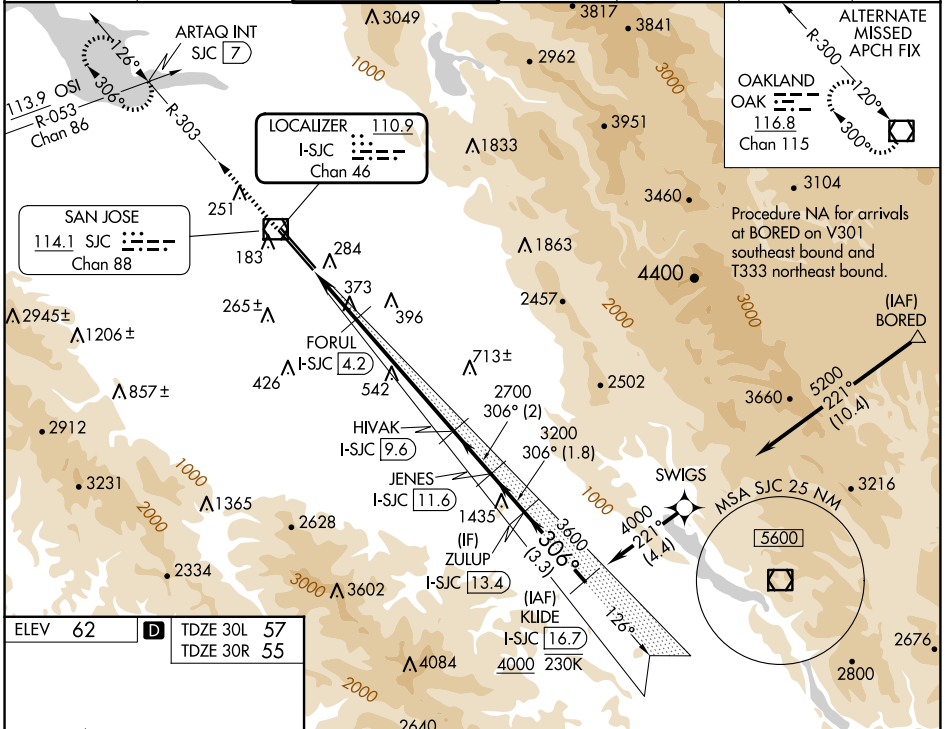
RNAV 1-GPS or RADAR required for procedure entry. DME required.
From BORED: RNAV 1-GPS required.

MALSR Rwy 30L

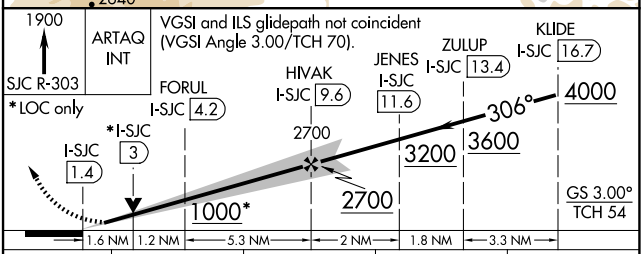
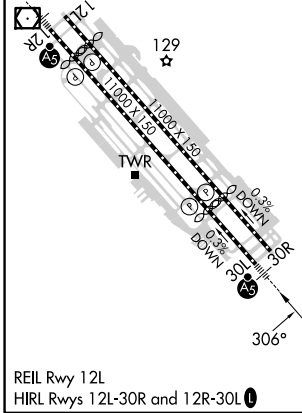
MISSED APPROACH: Climb to 1900 on SJC VOR/DME R-303 to ARTAQ INT/SJC 7 DME and hold.

RVR 1800 authorized with use of FD or AP or HUD to DA.

D-ATIS 126.95	NORCAL APP CON 120.1 290.25	SAN JOSE TOWER * 124.0 (CTAF) 257.6	GND CON 121.7	CLNC DEL 118.0	CPDLC	UNICOM 122.95
-------------------------	---------------------------------------	---	-------------------------	--------------------------	-------	-------------------------



ELEV 62	TDZE 30L 57	TDZE 30R 55
---------	-------------	-------------



CATEGORY	A	B	C	D
S-ILS 30L#	257/24 200 (200-1/2)			
S-LOC 30L	640/24	583 (600-1/2)	640-1 1/4	583 (600-1 1/4)
SIDESTEP 30R	640-1	585 (600-1)	640-1 3/4	585 (600-1 3/4)

SW-2, 15 MAY 2025 to 12 JUN 2025

SW-2, 15 MAY 2025 to 12 JUN 2025