

APP CRS	Rwy Idg	<b>2690</b>
<b>312°</b>	TDZE	<b>133</b>
	Apt Elev	<b>135</b>

# RNAV (GPS) Y RWY 31R

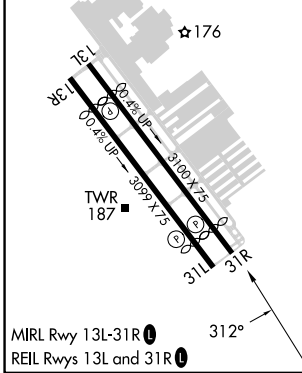
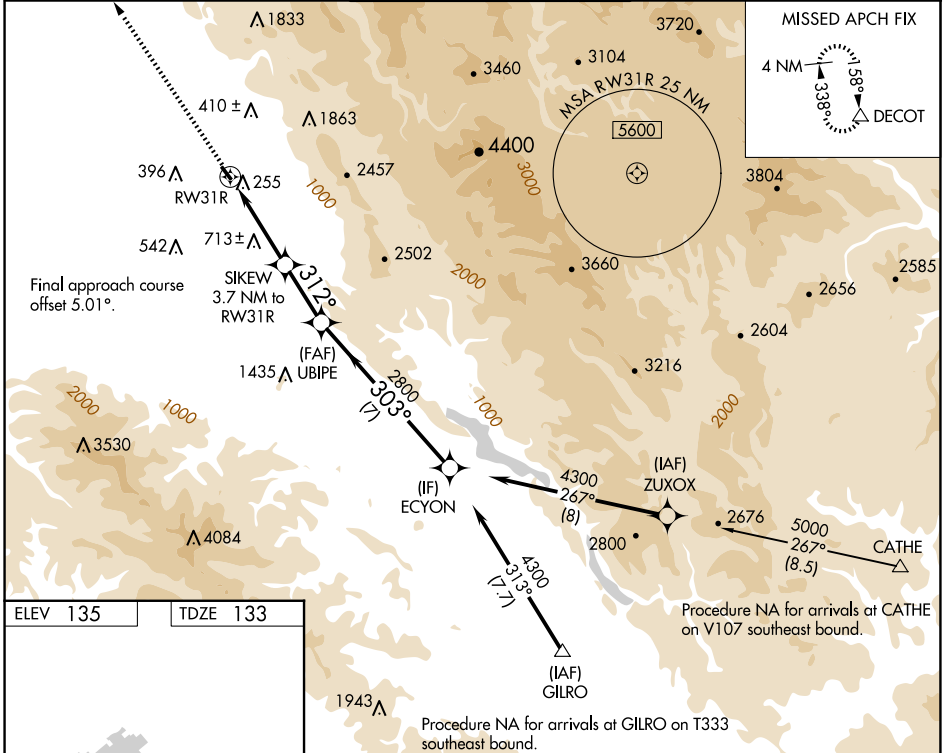
REID-HILLVIEW OF SANTA CLARA COUNTY (R.H.V)

RNP APCH.

**NA** Circling Rwy 31L NA at night. Rwy 31R helicopter visibility reduction below 3/4 SM NA. VDP NA when using Norman Y Mineta San Jose Intl altimeter setting. Circling east of Rwy 13L-31R NA at night. When control tower closed, use Norman Y Mineta San Jose Intl altimeter setting and increase all MDAs 40 feet.

MISSED APPROACH: Climb to 4000 direct DECOT and hold.

ATIS	NORCAL APP CON	REID-HILLVIEW TOWER * (Rwy 13L-31R) (Rwy 13R-31L)	GND CON	UNICOM
<b>125.2</b>	<b>120.1 290.25</b>	<b>119.8 (CTAF) 126.1</b>	<b>121.65</b>	<b>122.95</b>



4000	↑	DECOT	△
RWY 31R		SIKEW 3.7 NM to RWY 31R	UBIPE
2.6 NM to RWY 31R		2.6 NM to RWY 31R	≤ 4.00° TCH 45
1760		2800	4300
2.6 NM		1.1 NM	2.5 NM
7 NM			
CATEGORY	A	B	C
LNAV MDA	1300-1¼ 1167 (1200-1¼)	1300-1½ 1167 (1200-1½)	NA
CIRCLING	1300-1¼ 1165 (1200-1¼)	1300-1½ 1165 (1200-1½)	NA

SW-2, 15 MAY 2025 to 12 JUN 2025

SW-2, 15 MAY 2025 to 12 JUN 2025