


# NUEVO EIGHT DEPARTURE

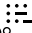
AL-294 (FAA)

SAN FRANCISCO BAY OAKLAND INTL (OAK)  
OAKLAND, CALIFORNIA

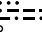
**TOP ALTITUDE:  
ASSIGNED BY ATC**

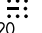
D-ATIS  
133.775  
CLNC DEL  
121.1  
CPDLC  
GND CON  
121.9 (Rwys 28L/R)  
121.75 (Rwy 30)  
OAKLAND TOWER  
118.3 291.65 (Rwys 28L/R)  
127.2 256.9 (Rwy 30)  
NORCAL DEP CON  
135.1 307.2

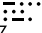
POINT REYES  
113.7 PYE   
Chan 84

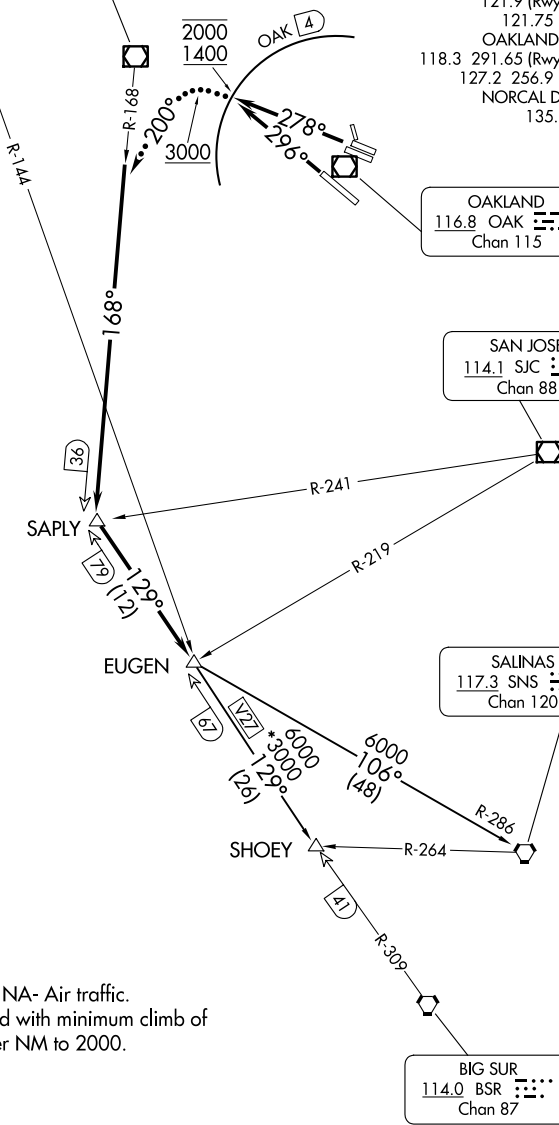
SAUSALITO  
116.2 SAU   
Chan 109

OAKLAND  
116.8 OAK   
Chan 115

SAN JOSE  
114.1 SJC   
Chan 88

SALINAS  
117.3 SNS   
Chan 120

BIG SUR  
114.0 BSR   
Chan 87



NOTE: RADAR required.  
NOTE: DME required.

### TAKEOFF MINIMUMS

Rwys 10L, 10R, 12, 15, 33: NA- Air traffic.  
Rwys 28L, 28R, 30: Standard with minimum climb of  
375' per NM to 2000.

NOTE: Chart not to scale.

(CONTINUED ON FOLLOWING PAGE)