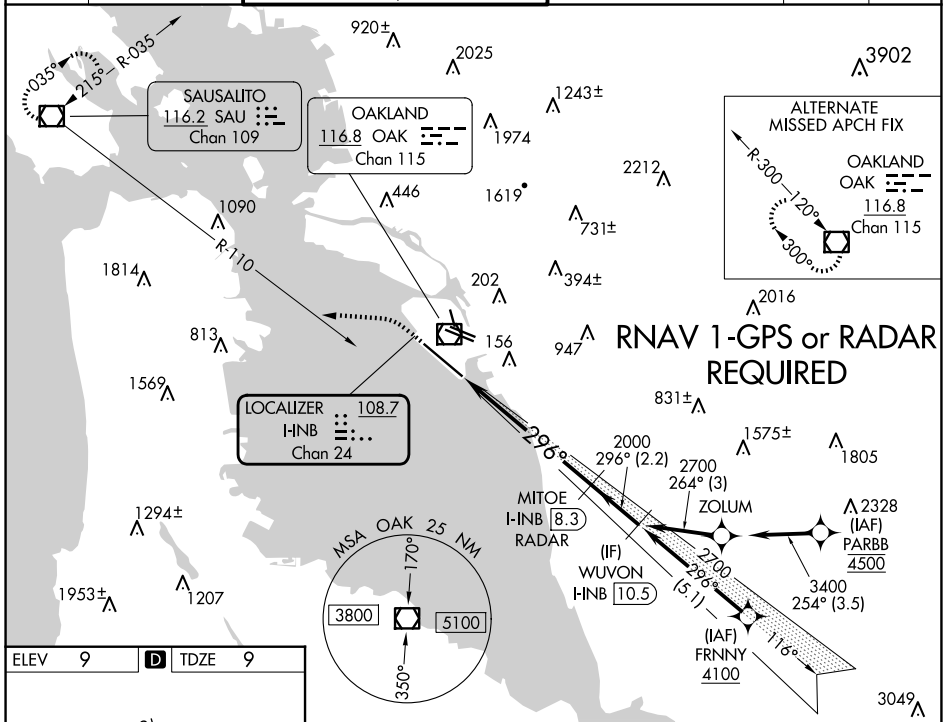


LOC/DME I-INB 108.7 Chan 24	APP CRS 296°	Rwy Idg TDZE Apt Elev 10000 9 9
--	------------------------	---

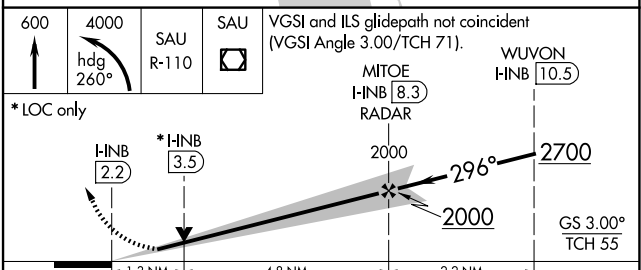
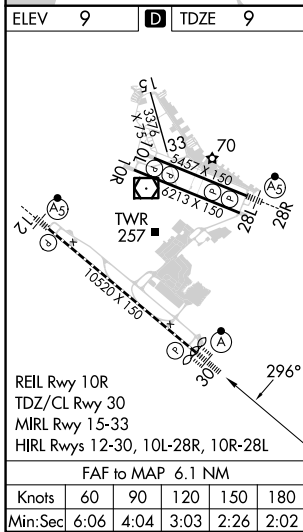
ILS or LOC RWY 30

SAN FRANCISCO BAY OAKLAND INTL (OAK)

DME or RADAR required.		ALSF-2 	MISSED APPROACH: Climb to 600 then climbing left turn to 4000 on heading 260° and on SAU VOR/DME R-110 to SAU VOR/DME and hold, continue climb-in-hold to 4000.			
D-ATIS 133.775	NORCAL APP CON 125.35 263.15	OAKLAND TOWER 118.3 291.65 (Rwys 10L/R-28L/R, 15-33) 127.2 256.9 (Rwy 12-30)		GND CON 121.9 (Rwys 10L/R-28L/R, 15-33) 121.75 (Rwy 12-30)	CLNC DEL 121.1	CPDLC



RNAV 1-GPS or RADAR REQUIRED



CATEGORY	A	B	C	D
S-ILS 30	209/18 200 (200-½)			
S-LOC 30	500/24	491 (500-½)	500/50	491 (500-1)
CIRCLING	560-1	551 (600-1)	660-1¾ 651 (700-1¾)	1400-3 1391 (1400-3)

SW-2, 15 MAY 2025 to 12 JUN 2025

SW-2, 15 MAY 2025 to 12 JUN 2025