

| | | |
|---------------------------|------------------------|-------------------------|
| LOC I-AAZ 111.9 | APP CRS 116° | Rwy Idg 10000 |
| | TDZE 9 | |
| | Apt Elev 9 | |

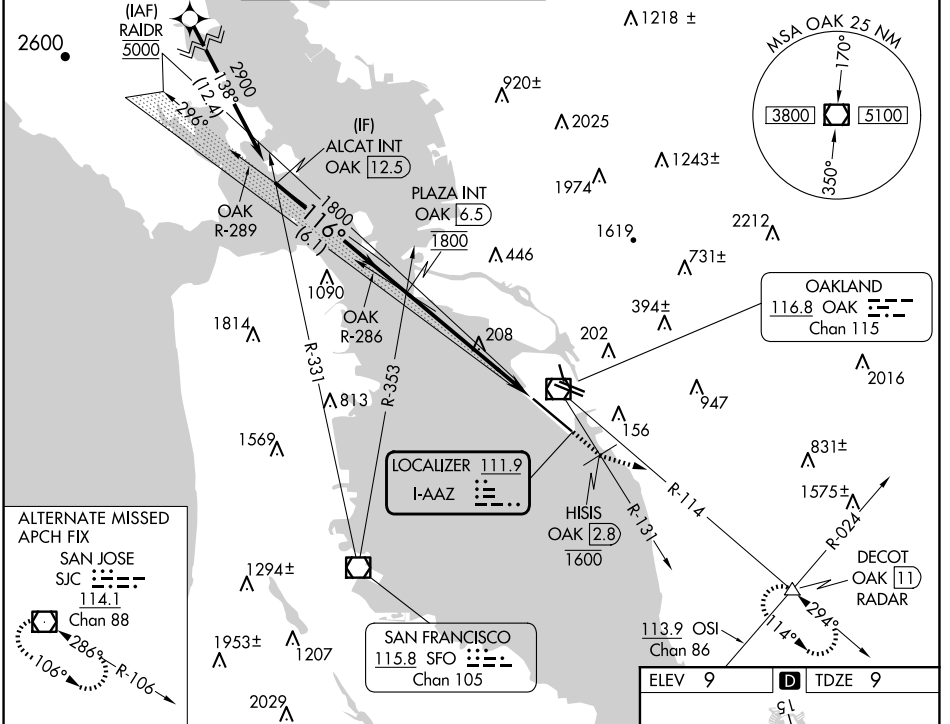
ILS or LOC RWY 12

SAN FRANCISCO BAY OAKLAND INTL (OAK)

DME required. From RAIDR: RNAV 1-GPS required. MALSR MISSED APPROACH: Climb on heading 116° and on OAK VOR/DME R-131 to cross HISIS/OAK 2.8 DME at or below 1600 then climb to 5100 on heading 090° and on OAK VOR/DME R-114 to DECOT INT/OAK 11 DME/RADAR and hold, continue climb-in-hold to 5100.

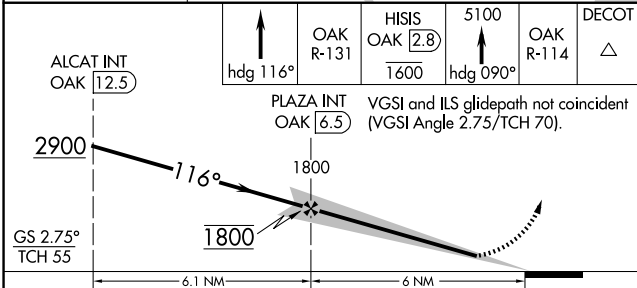
*RVR 1800 authorized with the use of FD or AP or HUD to DA.

| | | | | | |
|--------------------------|--|--|--|--------------------------|-------|
| D-ATIS 133.775 | NORCAL APP CON 125.35 263.15 | OAKLAND TOWER 118.3 291.65 (Rwys 10L/R-28L/R, 15-33) 127.2 256.9 (Rwy 12-30) | GND CON 121.9 (Rwys 10L/R-28L/R, 15-33) 121.75 (Rwy 12-30) | CLNC DEL 121.1 | CPDLC |
|--------------------------|--|--|--|--------------------------|-------|

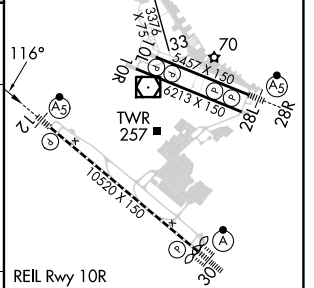


SW-2, 15 MAY 2025 to 12 JUN 2025

SW-2, 15 MAY 2025 to 12 JUN 2025



| | |
|--------|--------|
| ELEV 9 | TDZE 9 |
|--------|--------|



| | | | | |
|-----------|--------------------|---|--|---|
| CATEGORY | A | B | C | D |
| S-ILS 12* | 209/24 | | 200 (200-½) | |
| S-LOC 12 | 460/24 451 (500-½) | | 460/45 451 (500-¾) | |
| CIRCLING | 560-1 551 (600-1) | | 660-1¾ 651 (700-1¾) 1400-3 1391 (1400-3) | |

| | | | |
|-----------------|---------------|----------------|-----------------------------------|
| REIL Rwy 10R | TDZ/CL Rwy 30 | MIRL Rwy 15-33 | HIRL Rwys 12-30, 10L-28R, 10R-28L |
| FAF to MAP 6 NM | | | |
| Knots | 60 | 90 | 120 150 180 |
| Min:Sec | 6:00 | 4:00 | 3:00 2:24 2:00 |