

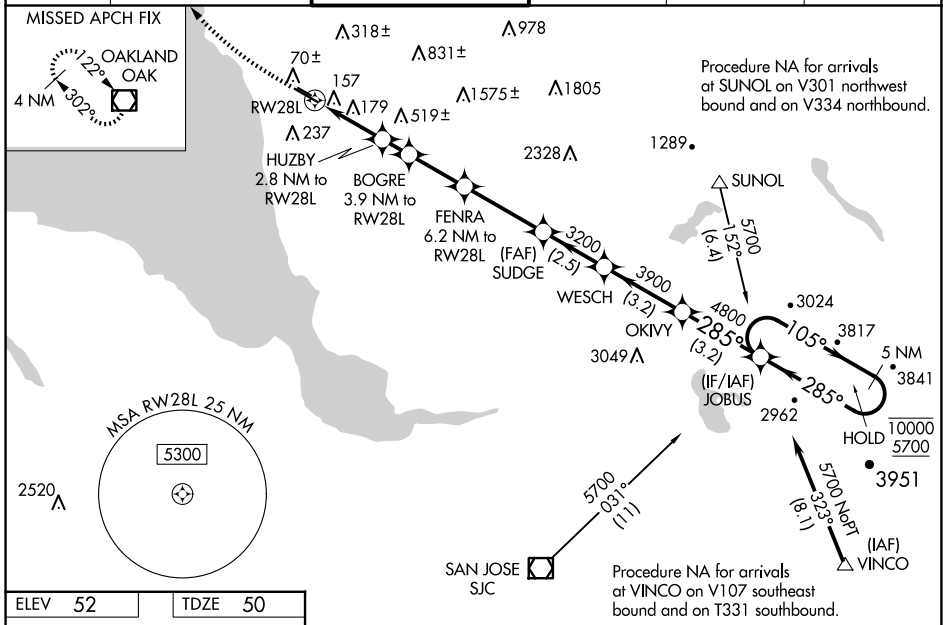
WAAS CH 40330 W28A	APP CRS 285°	Rwy Idg 5018 TDZE 50 Apr Elev 52
--	------------------------	---

RNAV (GPS) RWY 28L

HAYWARD EXEC (HWD)

RNP APCH - GPS.		<p>Baro-VNAV NA. Circling Rwy 10L, 28R NA at night. Rwy 28L helicopter visibility reduction below ¾ SM NA. When local altimeter setting not received, use OAK altimeter setting and increase LPV DA to 370 feet; increase LNAV/VNAV DA to 461 feet; increase all MDAs 40 feet and LNAV visibility Cat C/D ¼ SM, and Circling visibility Cat D ¼ SM. Circling NA north of Rwy 10L-28R.</p>		<p>MISSED APPROACH: Climb to 600 then climbing right turn to 2100 direct OAK VOR/DME and hold.</p>	
-----------------	--	--	--	---	--

ATIS 126.7	NORCAL APP CON 124.4 351.8	HAYWARD TOWER* 120.2 (CTAF) 257.8	GND CON 121.4	CLNC DEL 128.05	UNICOM 122.95
----------------------	--------------------------------------	---	-------------------------	---------------------------	-------------------------



ELEV 52	TDZE 50
---------	---------

600	2100	OAK	VGSI and RNAV glidepath not coincident (VGSI Angle 4.00/TCH 35).				
		<p>FENRA 6.2 NM to RW28L 3200 SUDGE 3900 WESCH 4800 OKIVY 4800 JOBUS 10000 5 NM Holding Pattern</p> <p>GP 3.10° TCH 35</p>					
0.9	1.9	1.1 NM	2.3 NM	3.3 NM	2.5 NM	3.2 NM	3.2 NM
CATEGORY	A		B		C		D
LPV DA	348-1		298 (300-1)				
LNAV/VNAV DA	439-1½		389 (400-1½)				
LNAV MDA	460-1 410 (500-1)		460-1½ 410 (500-1½)				
CIRCLING	540-1 488 (500-1)		540-1½ 488 (500-1½)		920-2¾ 868 (900-2¾)		

MIRL Rwy 10R-28L
MIRL Rwy 10L-28R
REIL Rwy 10R and 28L

SW-2, 15 MAY 2025 to 12 JUN 2025

SW-2, 15 MAY 2025 to 12 JUN 2025