

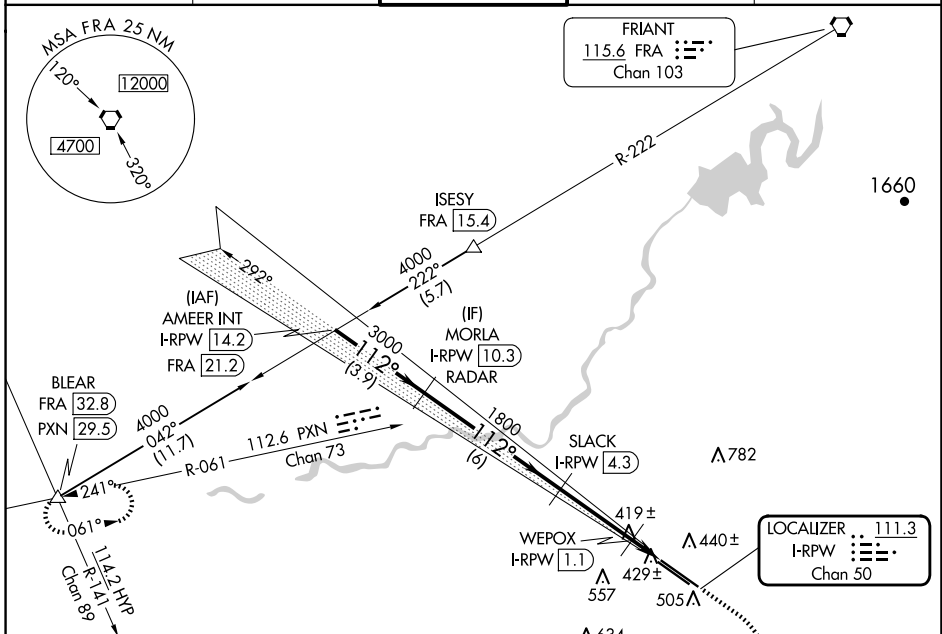
LOC/DME I-RPW <b>111.3</b> Chan <b>50</b>	APP CRS <b>112°</b>	Rwy Idg <b>9279</b>	11L <b>8008</b>
		TDZE <b>336</b>	11R <b>333</b>
		Apt Elev <b>336</b>	<b>336</b>

# LOC Y RWY 11L

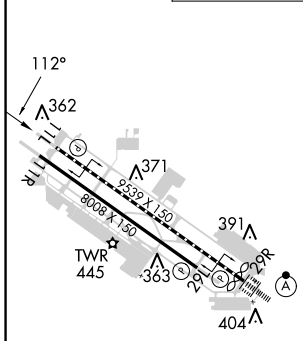
FRESNO YOSEMITE INTL (FAT)

DME required.	MISSED APPROACH: Climb to 2000 then climbing right turn to 4900 on heading 300° and PXN VORTAC R-061 to BLEAR INT/PXN VORTAC 29.5 DME and hold.
---------------	---

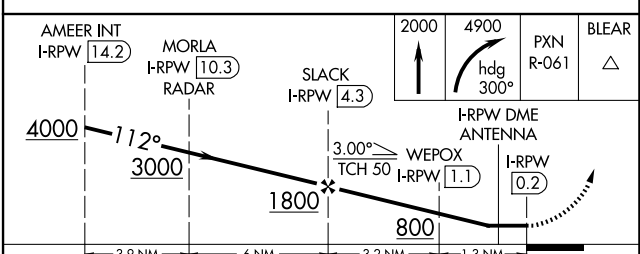
ATIS <b>121.35 273.6</b>	FRESNO APP CON <b>119.6 351.95</b>	FRESNO TOWER <b>118.2 251.1</b>	GND CON <b>121.7 348.6</b>	CLNC DEL <b>124.35 348.6</b>
-----------------------------	---------------------------------------	------------------------------------	-------------------------------	---------------------------------



ELEV 336	<b>D</b>	TDZE 11L 336
		TDZE 11R 333



REIL Rwy 11L and 11R  
 HIRL Rwy 11L-29R  
 MIRL Rwy 11R-29L  
 TDZ/CL Rwy 29R



CATEGORY	A	B	C	D	E
S-LOC 11L	680/55 344 (400-1)				
SIDESTEP 11R	680-1 347 (400-1)		680-1½ 347 (400-1½)		680-2 347 (400-2)

SW-2, 15 MAY 2025 to 12 JUN 2025

SW-2, 15 MAY 2025 to 12 JUN 2025