

LOC/DME I-FAT 111.3 Chan 50	APP CRS 292°	Rwy Idg TDZE Apt Elev	9227 333 336
--	------------------------	-----------------------------	---

ILS Y RWY 29R (CAT II & III)

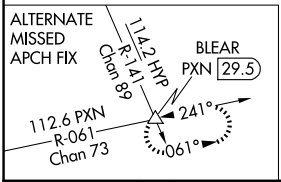
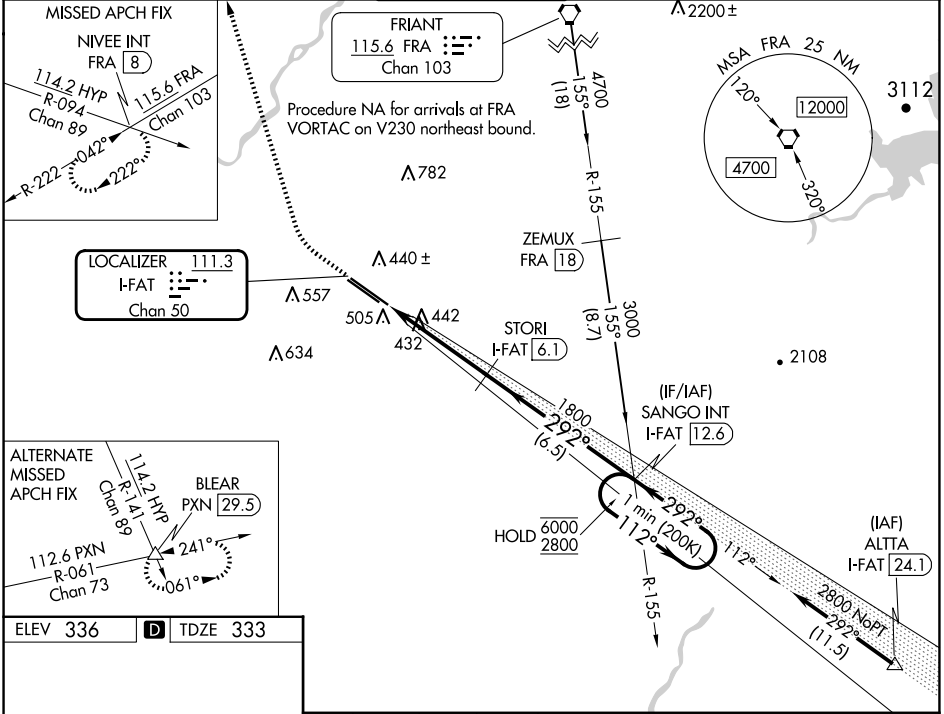
FRESNO YOSEMITE INTL (FAT)

▼ CAT II: RVR 1000 authorized with specific OPSPEC, MSPEC, or LOA approval and use of autoland or HUD to touchdown.

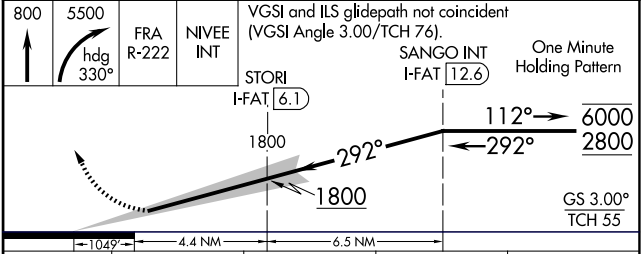
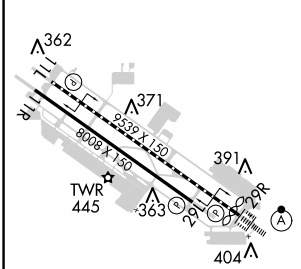
ALSF-2

MISSED APPROACH: Climb to 800 then climbing right turn to 5500 on heading 330° and FRA VORTAC R-222 to NIVEE INT/FRA 8 DME and hold, continue climb-in-hold to 5500.

ATIS 121.35 273.6	FRESNO APP CON 119.6 351.95	FRESNO TOWER 118.2 251.1	GND CON 121.7 348.6	CLNC DEL 124.35 348.6
-----------------------------	---------------------------------------	------------------------------------	-------------------------------	---------------------------------



ELEV 336	D	TDZE 333
----------	----------	----------



CATEGORY	A	B	C	D
S-ILS 29R	CAT II RA 101/12 100 DA 433			
S-ILS 29R	CAT III RVR 06			

CATEGORY II & III ILS - SPECIAL AIRCREW & AIRCRAFT CERTIFICATION REQUIRED

SW-2, 15 MAY 2025 to 12 JUN 2025

SW-2, 15 MAY 2025 to 12 JUN 2025