

WAAS CH <b>70620</b> <b>W31A</b>	APP CRS <b>312°</b>	Rwy Idg TDZE Apt Elev	<b>4228</b> <b>4378</b> <b>4378</b>
--	------------------------	-----------------------------	---

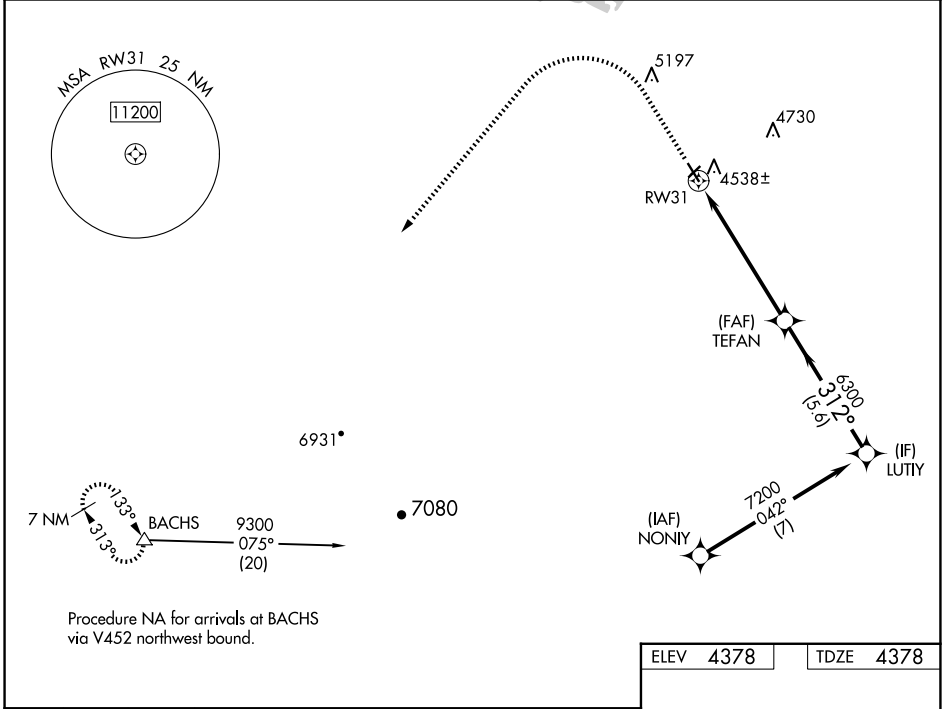
# RNAV (GPS) RWY 31

ALTURAS MUNI (AAT)

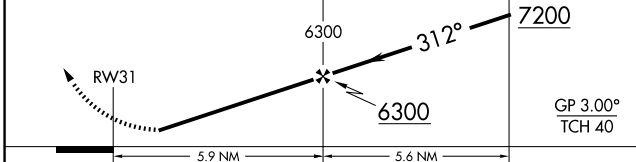
**⚠** For uncompensated Baro-VNAV systems, LNAV/VNAV NA below -23°C (-9°F) or above 54°C (130°F). Rwy 31 helicopter visibility reduction below 1 SM NA. DME/DME RNP-0.3 NA. Procedure NA at night.

MISSED APPROACH: Climb to 5400, then climbing left turn to 9000 direct BACHS and hold.

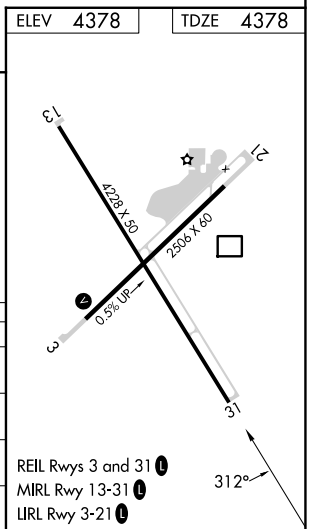
ASOS <b>124.175</b>	SEATTLE CENTER <b>127.6 346.35</b>	UNICOM <b>122.8 (CTAF) 0</b>
------------------------	---------------------------------------	---------------------------------



5400 9000 BACHS VGSI and RNAV glidepath not coincident.



CATEGORY	A	B	C	D
LPV DA	4830-1 $\frac{3}{8}$	452 (500-1 $\frac{3}{8}$ )		NA
LNAV/VNAV DA	4880-1 $\frac{3}{8}$	502 (600-1 $\frac{3}{8}$ )		NA
LNAV MDA	5120-1 742 (800-1)	5120-1 $\frac{1}{4}$ 742 (800-1 $\frac{1}{4}$ )		NA
<b>C</b> CIRCLING	5120-1 742 (800-1)	5200-1 $\frac{1}{4}$ 822 (900-1 $\frac{1}{4}$ )		NA



SW-2, 15 MAY 2025 to 12 JUN 2025

SW-2, 15 MAY 2025 to 12 JUN 2025