

VORTAC SAF <b>110.6</b> Chan 43	APP CRS <b>332°</b>	Rwy Idg TDZE Apt Elev <b>6316</b> <b>6305</b> <b>6349</b>
---------------------------------------	------------------------	--

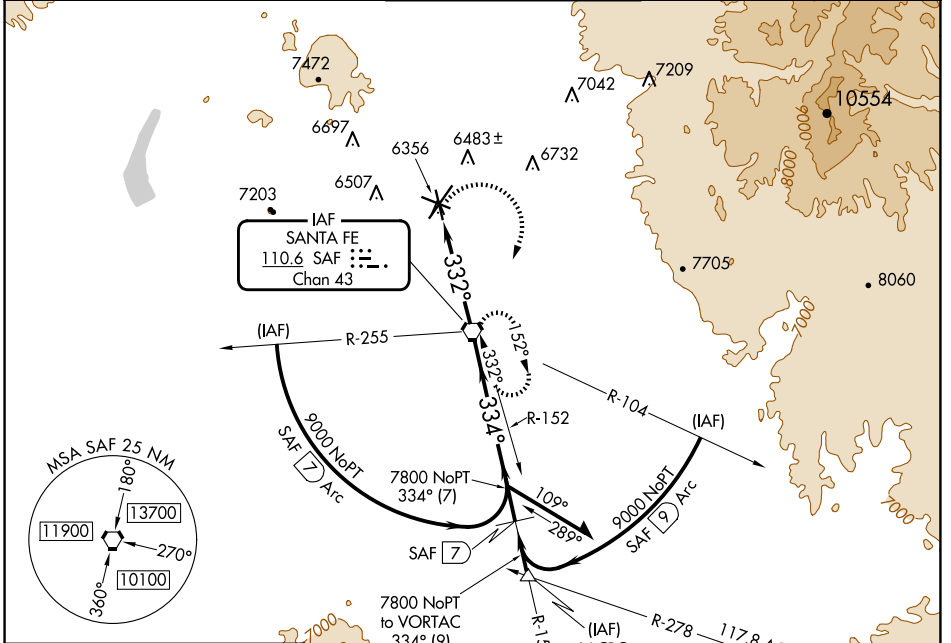
# VOR RWY 33

SANTA FE RGNL (SAF)

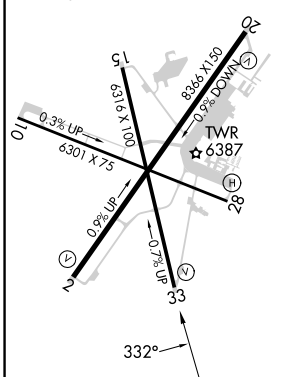
**⚠** When Control Tower closed, obtain local altimeter setting on unicom; when not received, use Los Alamos altimeter setting: increase all MDAs 160 feet and S-33 visibility Cat C/D ½ SM.

**MISSED APPROACH:** Climbing right turn to 9000 direct SAF VORTAC and hold, continue climb-in-hold to 9000.

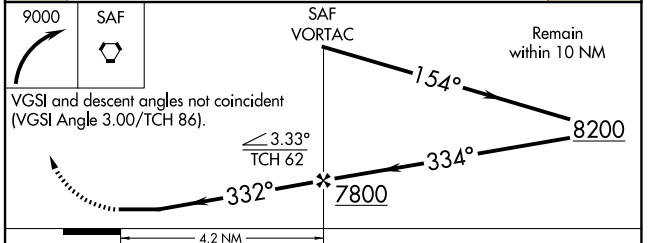
ATIS <b>128.55</b>	ALBUQUERQUE CENTER <b>132.8 346.35</b>	SANTA FE TOWER★ <b>119.5 (CTAF) 239.3</b>	GND CON <b>121.7</b>	UNICOM <b>122.95</b>
-----------------------	---	--	-------------------------	-------------------------



ELEV 6349	<b>D</b>	TDZE 6305
REIL Rwy 10, 15, 20 and 33		
MIRL Rwy 2-20 and 15-33		



9000	SAF	SAF VORTAC	Remain within 10 NM
------	-----	------------	---------------------



CATEGORY	A	B	C	D
S-33	6720-1	415 (400-1)	6720-1¼	415 (400-1¼)
CIRCLING	6840-1 491 (500-1)	6920-1 571 (600-1)	7340-3 991 (1000-3)	7660-3 1311 (1400-3)

SW-1, 17 APR 2025 to 15 MAY 2025

SW-1, 17 APR 2025 to 15 MAY 2025