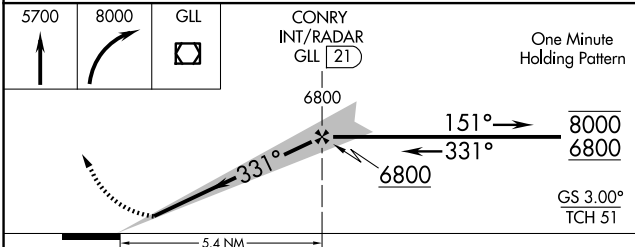
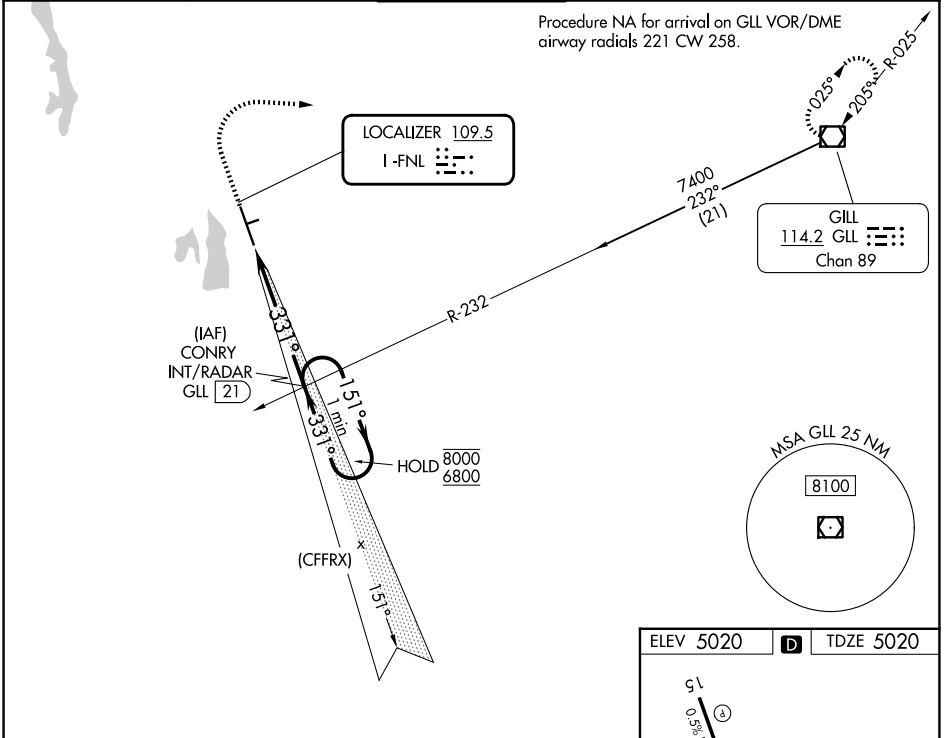


LOC I-FNL 109.5	APP CRS 331°	Rwy Ldg TDZE Apt Elev	8500 5020 5020
---------------------------	------------------------	-----------------------------	---

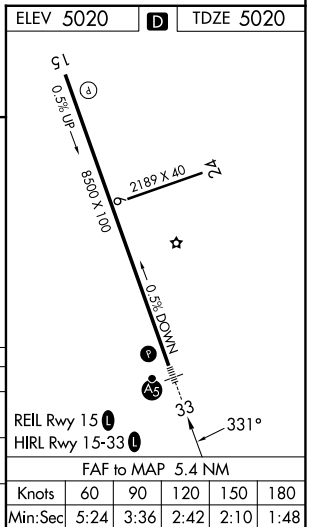
ILS or LOC RWY 33

NORTHERN COLORADO RGNL (F'NL)

<p>Circling Rwy 24 NA at night.</p>		<p>MALS R</p>	<p>MISSED APPROACH: Climb to 5700 then climbing right turn to 8000 direct GLL VOR/DME and hold.</p>		
ATIS 135.075	DENVER APP CON 134.85 251.125	NOCO TOWER ★ 118.4 (CTAF) 0	GND CON 121.65	CLNC DEL 120.25 (When twr closed)	



CATEGORY	A	B	C	D
S-ILS 33	5220-½ 200 (200-½)			
S-LOC 33	5500-½ 480 (500-½)	5500-1 480 (500-1)		
CIRCLING	5500-1 480 (500-1)	5520-1 500 (500-1)	5520-1½ 500 (500-½)	5700-2¼ 680 (700-2¼)



SW-1, 07 AUG 2025 to 04 SEP 2025

SW-1, 07 AUG 2025 to 04 SEP 2025