

LOC/DME I-FMN	APP CRS	Rwy Idg	<b>6248</b>
<b>111.9</b>	<b>256°</b>	TDZE	<b>5507</b>
Chan <b>56</b>		Apt Elev	<b>5507</b>

# ILS or LOC RWY 25

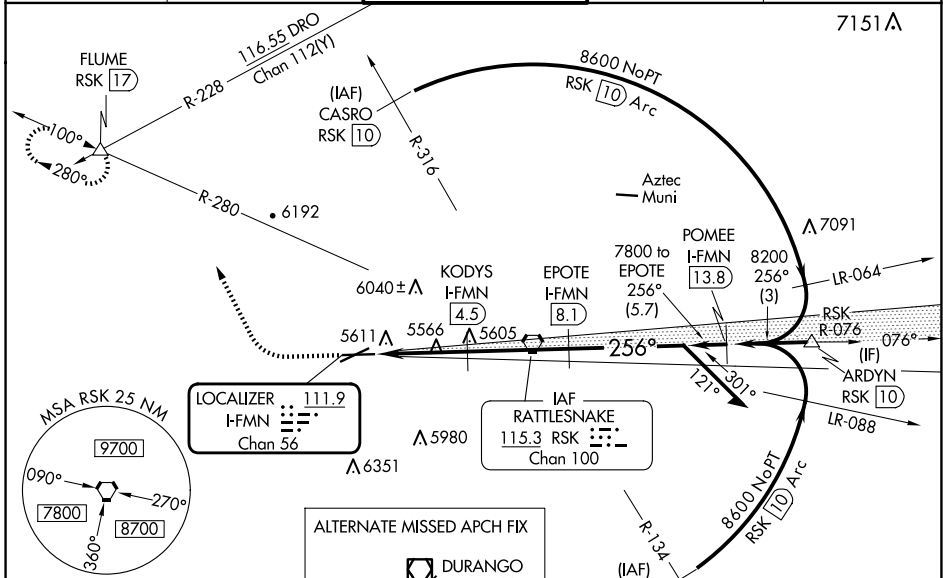
FOUR CORNERS RGNL (FMN)

DME required.

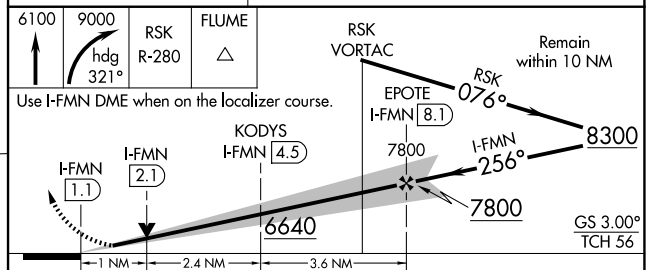
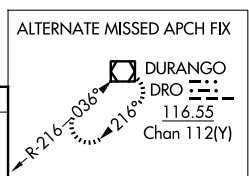
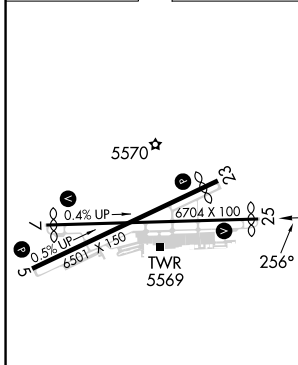
**VDP** N/A with Durango altimeter setting. Circling N/A for Cat D southeast of Rwy 5 and south of Rwy 25. When local altimeter setting not received, use Durango altimeter setting and increase S-ILS 25 DA to 5950 feet and all visibilities  $\frac{1}{2}$  SM; increase all MDAs 260 feet and S-LOC 25 visibility Cat C/D  $\frac{3}{4}$  SM, and Circling visibility Cat B  $\frac{1}{4}$  SM and Cat C  $\frac{1}{2}$  SM.

**MISSED APPROACH:** Climb to 6100 then climbing right turn to 9000 on heading 321° and on RSK VORTAC R-280 to FLUME INT and hold, continue climb-in-hold to 9000.

ATIS <b>127.15</b>	DENVER CENTER <b>118.575 348.7</b>	FARMINGTON TOWER* <b>118.9</b> (CTAF) <b>257.8</b>	GND CON <b>121.7</b>	UNICOM <b>122.95</b>
-----------------------	---------------------------------------	---	-------------------------	-------------------------



ELEV 5507	<b>D</b>	TDZE 5507
-----------	----------	-----------



REIL Rws 23 and 25	MIRL Rws 5-23 and 7-25	FAF to MAP 7 NM												
<table border="1"> <tr> <th>Knots</th> <td>60</td> <td>90</td> <td>120</td> <td>150</td> <td>180</td> </tr> <tr> <th>Min:Sec</th> <td>7:00</td> <td>4:40</td> <td>3:30</td> <td>2:48</td> <td>2:20</td> </tr> </table>			Knots	60	90	120	150	180	Min:Sec	7:00	4:40	3:30	2:48	2:20
Knots	60	90	120	150	180									
Min:Sec	7:00	4:40	3:30	2:48	2:20									
<b>CIRCLING</b>	6020-1 513 (600-1)	6140-1 633 (700-1)	6380-2½ 873 (900-2½)	6400-3 893 (900-3)										

SW-1, 15 MAY 2025 to 12 JUN 2025

SW-1, 15 MAY 2025 to 12 JUN 2025