

WAAS CH 99307 W16A	APP CRS 173°	Rwy Idg 12000 TDZE 5357 Apt Elev 5434
--	------------------------	--

RNAV (GPS) Y RWY 16L

DENVER INTL (DEN)

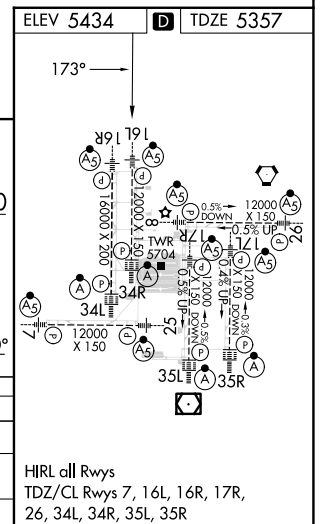
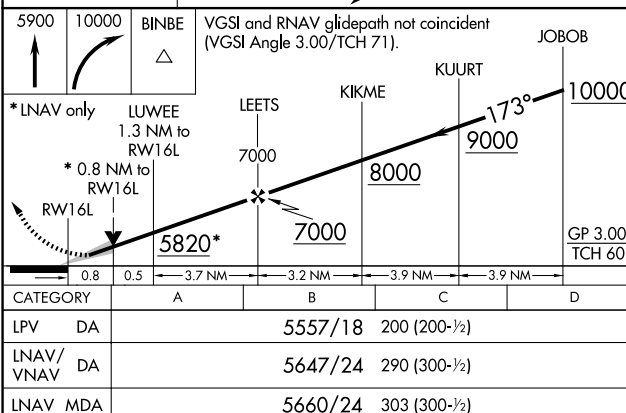
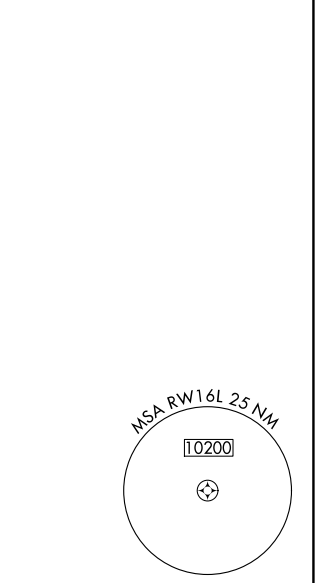
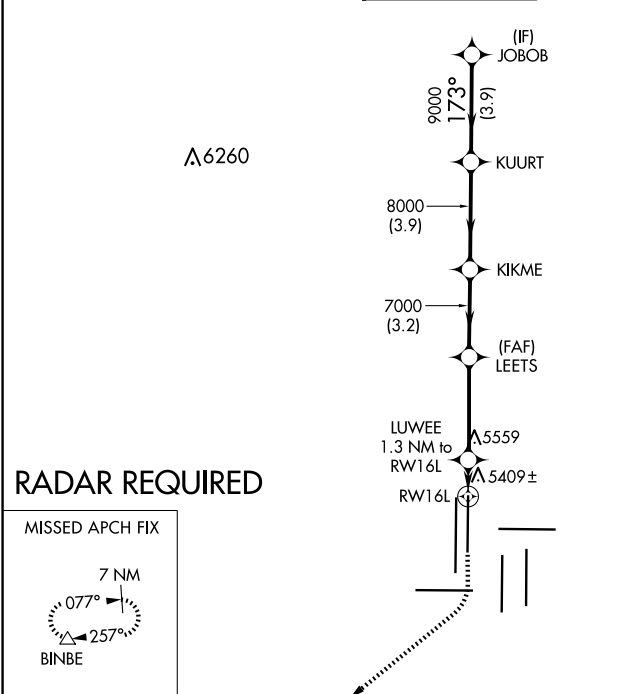
▽ For uncompensated Baro-VNAV systems, LNAV/VNAV NA below -25°C (-13°F) or above 45°C (114°F). Simultaneous approach authorized with Rwy 17 L/R. DME/DME RNP -0.3 NA. LNAV procedure NA during simultaneous operations. For inoperative MALSR, increase LNAV/VNAV all Cats, and LNAV Cats C/D visibility to RVR 4500. Use of FD or AP providing RNAV track guidance required during simultaneous operations.

MALSR



MISSED APPROACH: Climb to 5900 then climbing right turn to 10000 direct BINBE and hold, continue climb-in-hold to 10000.

D-ATIS 125.6 379.9 (ARR) 134.025 (DEP)	DENVER APP CON 119.3 307.3 (N) 120.35 379.3 (S)	DENVER TOWER 135.3 351.95	GND CON 121.35 379.175 (W) 121.85 377.1 (E)	CLNC DEL 118.75	CPDLC
--	---	-------------------------------------	---	---------------------------	-------



SW-1, 15 MAY 2025 to 12 JUN 2025

SW-1, 15 MAY 2025 to 12 JUN 2025